

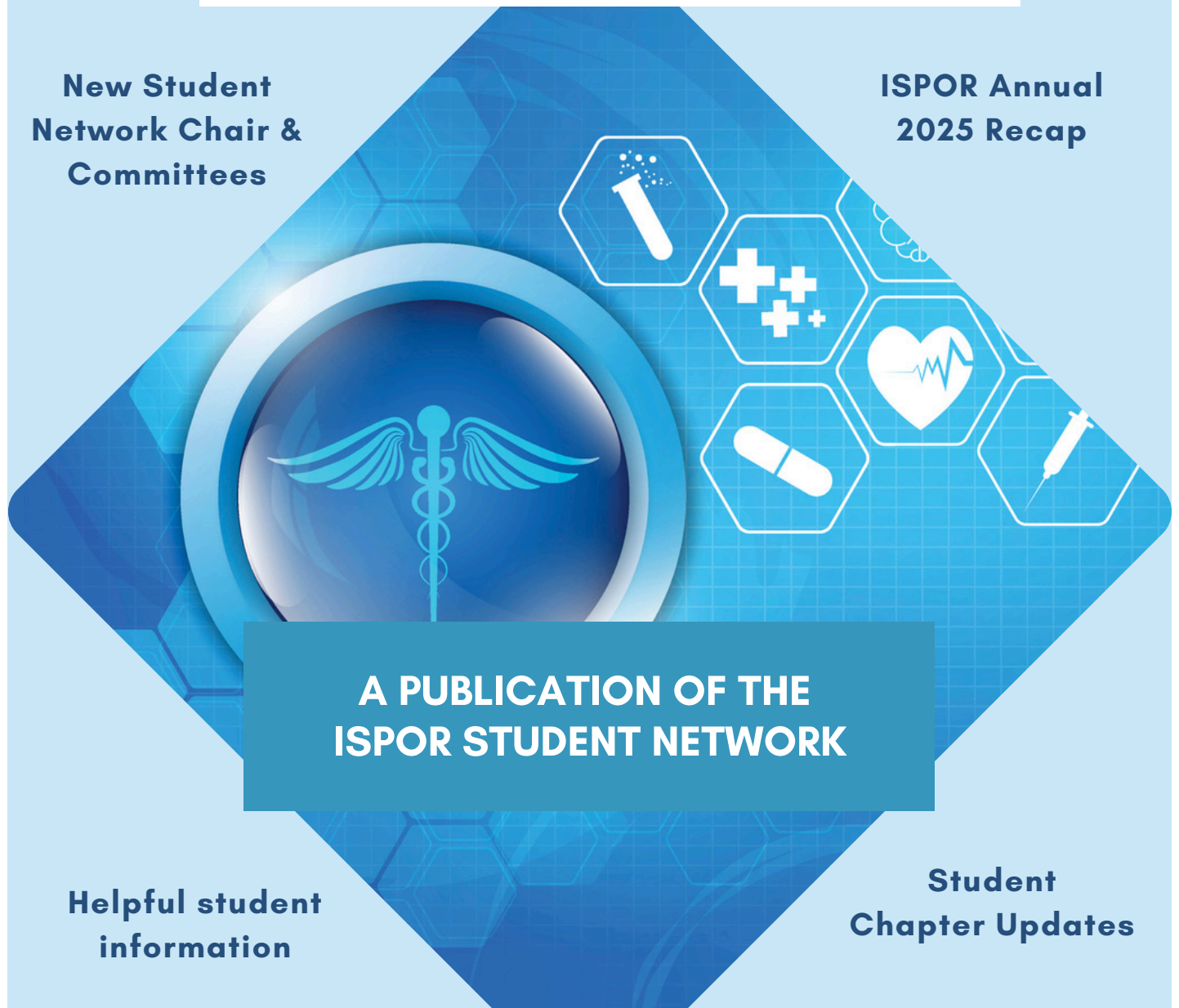
ISPOR STUDENT NETWORK

Newsletter

JULY 2025 | SUMMER ISSUE

**New Student
Network Chair &
Committees**

**ISPOR Annual
2025 Recap**



**A PUBLICATION OF THE
ISPOR STUDENT NETWORK**

**Helpful student
information**

**Student
Chapter Updates**

TABLE OF CONTENTS

3	CONTRIBUTORS
4	LETTER FROM THE STUDENT NETWORK CHAIR
5	LETTER FROM THE STUDENT NETWORK CHAIR-ELECT
6	MEET THE NEW COUNCIL 2025-2026
12	THANK YOU TO THE 2024-2025 COMMITTEES
14	ISPOR ANNUAL 2025 HIGHLIGHTS
	<i>Student Research Spotlight</i>
	<i>Panel Discussion and Roundtable</i>
	<i>Student Research Competition</i>
21	ISPOR STUDENT NETWORK WEBINAR
	<i>Causal AI in HEOR: Beyond Predictions to Actionable Insights</i>
24	HELPFUL STUDENT INFORMATION
27	FEATURED ARTICLES
	<i>Value in Health Quantifying the Impact of Intervention on Health Outcomes: A Tool for Assessing Incremental Changes to Life Expectancy</i>
	<i>Value & Outcomes Spotlight Tied to the Past, Unprepared for the Future: Meeting the Alzheimer's Disease Challenge With HEOR</i>
30	SKILL UP: TUFTS-CEVR CEA REGISTRY
32	ISPOR STUDENT RESEARCH SPOTLIGHT
37	STUDENT CHAPTER ANNUAL UPDATES
42	HOW TO GET INVOLVED

CONTRIBUTORS



ANU BOMPELLI, PHARM.D., MS, PH.D(C)

*Publications Committee Co-Chair, ISPOR Student Network
University of Minnesota
United States*



KANYA K. SHAH, PHARM.D., MS, MBA

*ISPOR Student Network Chair 2024-2025
University of Illinois Chicago
United States*



DOMINIQUE SEO, MPH

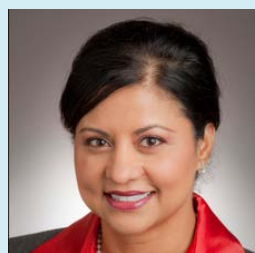
*ISPOR Student Network Chair 2025-2026
University of Maryland, Baltimore, School of Pharmacy
United States*

SPECIAL THANKS



LYNN SCHINDEL

*Manager, Global Engagement
ISPOR, United States*



ZEBA KHAN, RPH, PHD

*ISPOR Student Network Advisor
United States*

SUBMIT AN ARTICLE TO THE NEWSLETTER!

To submit an article for the next issue of our student newsletter, please contact the ISPOR Student Network at studentnetwork@ispor.org

LETTER FROM THE STUDENT NETWORK CHAIR

Hello Student Colleagues!

As I write this letter at the end of my term as the Student Network Chair for ISPOR, I am amazed at the incredible work accomplished this term by the Student Network. It has been an absolute privilege to work alongside the ISPOR Student Network Committee Co-Chairs, Members, and Regional Leads to bring educational initiatives and networking opportunities to students around the world interested in health economics and outcomes research.

The Student Network Committees put together events and student initiatives throughout the term to achieve our goals of engagement, personal & professional development, and globalization of the student network. The Event Planning Committee successfully organized roundtable discussion events, student poster tours, and informal hangouts at two major international ISPOR conferences. The Publications Committee published three newsletters, with new segments highlighting the research of student across the Student Network and providing useful resources to students around the world. The Survey and Evaluation Committee developed, disseminated, analyzed, and presented the findings of a survey that collected information and feedback from the Student Network to guide future initiatives. The Education Committee organized mentoring sessions and webinars to bring relevant and timely content to the Student Network. And, the regional leads engaged with ISPOR Student Chapters across the world!

We were so excited to bring back the student research competition this term. Congratulations to all the participants and the winners!

It has been my truest honor to work along side the talented future leaders in the HEOR field, and I am looking forward to all the amazing things the Student Network will continue to accomplish under the incoming Student Network Chair, Dominique Seo.

Thank you to everyone on the Student Network, as well as the ISPOR Staff and Student Advisors, for an excellent year working together!



KANYA K. SHAH, PHARMD, MS, MBA (SHE/HER)

ISPOR Student Network Chair 2024-2025
University of Illinois Chicago, College of Pharmacy
United States

LETTER FROM THE STUDENT NETWORK CHAIR-ELECT

Dear Fellow ISPOR Colleagues,

I want to begin by sincerely thanking Kanya for her incredible service and dedication over the past year. Her commitment to the Student Network and her thoughtful guidance has made a lasting impact, and we are all grateful for the time and energy she has and continues to devote to our society.

As I step into the role of Student Network Chair for the 2025-2026 term, I'm excited to build on the strong foundation laid by Kanya and the entire ISPOR leadership team. My goals for the upcoming year closely align with last year's strategic focus, strengthening student engagement, designing programming that supports personal and professional growth, and fostering an inclusive environment where students from all backgrounds feel welcomed, supported, and empowered within the Student Network.

During this year, I hope to strengthen cross-chapter collaborations and deepen connections with the broader ISPOR organization. Through conference events, webinars, panel discussions, and the Student Network newsletter, I aim to help create opportunities for students to connect with each other and with leaders in our field. I also look forward to continuing our efforts to promote diversity, equity, inclusion, and a sense of belonging across our global network.

I'm honored to continue working with ISPOR and especially with the passionate and dedicated members of our four Student Network committees. Thank you to the Student Network members and leaders for trusting me with this opportunity. It's truly a privilege to work alongside all of you, and I'm so excited for everything we'll accomplish together in the coming year!

As we move forward, please don't hesitate to reach out with any ideas or opportunities for programming. Let's make this a great year!



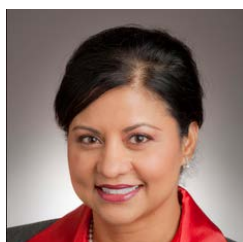
DOMINIQUE SEO, MPH

ISPOR Student Network Chair 2025-2026
University of Maryland, Baltimore, School of Pharmacy
United States

MEET THE NEW ISPOR STUDENT NETWORK LEADERSHIP COUNCIL



ISPOR STUDENT NETWORK LEADERSHIP COUNCIL 2025-2026



Zeba M. Khan, RPh, PhD
Student Network
Advisor



Dominique Seo, MPH
Student Network
Chair
2025-2026
University of Maryland
School of Pharmacy,
Baltimore, MD, USA



**Kanya Shah, PhD,
PharmD, MBA, MS**
Student Network
Past Chair
2024-2025
University of Illinois,
Chicago, IL, USA



Ivy Leong, PhD, MS
Student Network Chair-
Elect
2025-2026
University of
Mississippi, Oxford,
MS, USA

FACULTY ADVISOR COUNCIL 2025-2027

Co-Chairs:



Askal Ayalew Ali, PhD, BA, MA
Associate Professor,
Florida A & M University
Tallahassee, FL, United
States



Bradley Martin, PharmD, RPh, PhD
Professor, University of
Arkansas for Medical
Sciences (UAMS)
Little Rock, AR, United
States

Co-Chair-Elects:



Qian Ding, MS, PhD
Associate Professor, Ferris
State University
Big Rapids, MI, United
States



Aaron Winn, MPP
Associate Professor,
University of Illinois at
Chicago
Chicago, IL, United States

Past Chairs:



Julia F. Slejko, PhD
Associate Professor,
University of Maryland
School of Pharmacy
Baltimore, MD, United
States



**Annesha White, MS,
PharmD, PhD**
Senior Associate Dean,
Associate Professor, UNT
System College of
Pharmacy
Fort Worth, TX, United
States

EDUCATION COMMITTEE

CO-CHAIR



Kamaljeet

ISF College of Pharmacy, India

Kamaljeet is currently pursuing his Doctor of Pharmacy (PharmD) from ISF College of Pharmacy, Punjab, India, where he also serves as President of the ISPOR Student Chapter and Co-Chair of the 2025-2026 ISPOR Student Network Education Committee. He has authored multiple peer-reviewed review articles on neurological disorders, neurotoxicity, and pharmacovigilance, and contributed to several academic book chapters. His current research focuses on evaluating health-related quality of life in stroke patients. Kamaljeet is also a member of international societies including AAN, ASCO, ASPN, and ASCPT. Kamaljeet is actively engaged in global health initiatives and has authored multiple academic reviews across pharmaceutical and clinical domains. He is passionate about promoting interdisciplinary collaboration and enhancing student engagement in health economics and outcomes research. His interests lie in neurology, pharmacovigilance, health economics, and pharmacist-led interventions. He aspires to pursue a PhD in Health Sciences with a focus on neurology and public health outcomes.



Vishwanauth Persaud, MPH

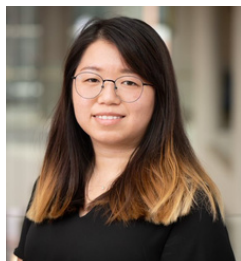
Touro College of Pharmacy, USA

Vishwanauth Persaud, MPH, is a third-year PharmD candidate at Touro University's College of Pharmacy with a managed-care focus. Drawing on his public-health training and a dual business-biomedical background, he centers his research on pharmacoeconomics, market access, and outcomes evaluation, including cost-effectiveness studies of biosimilars, long-acting antipsychotics, and formulary design.

Recently appointed Co-Chair of Education for the ISPOR Student Network Committee, he hopes to develop programming that equips student members worldwide with practical HEOR and Market Access skills. On campus, he leads numerous organizational chapters while presenting work at ISPOR, AMCP, and ASHP meetings. Vishwanauth's career goal is to apply rigorous economic analysis to expand equitable medication access and drive value-based health policy.

EVENT PLANNING COMMITTEE

CO-CHAIR



Pei-Lin (Lynn) Huang

University of Maryland, Baltimore, USA

Lynn (Pei-Lin) Huang is a PhD candidate in Pharmaceutical Health Services Research at the University of Maryland, Baltimore (UMB), specializing in pharmacoeconomics. Her research focuses on generating real-world evidence to support value-based care and reduce health disparities, particularly among individuals with cancer. She has contributed to studies in oncology, cardiovascular disease and substance use disorder, applying advanced analytics to diverse data sources including EHRs and claims data. With experience in both academia and industry, Lynn brings a multidisciplinary perspective to her research. She served as President of the UMB ISPOR Student Chapter for the 2024-2025 term and is excited to serve as Co-Chair of the Event Planning Committee for the ISPOR Student Network in the upcoming year, supporting student members around the world. In her free time, Lynn enjoys baking and spending time with her cocker spaniel puppy.



Adarsh Vishnu Kanekar

DYPDPU School of Pharmacy and Research, Pune, India

Adarsh Kanekar is a sixth-year PharmD student at DYPDPU School of Pharmacy and Research, Pune, with a focused interest in health economics, policy, and clinical research. He currently serves as Co-Chair of the Event Planning Committee for the ISPOR Student Network. He also represents student voices as an ISPOR Community Ambassador, and leads local efforts as President of the ISPOR DYPDPU Student Chapter. These roles reflect his passion for fostering collaboration, mentorship, and meaningful student engagement within the HEOR community. In addition to his academic and leadership responsibilities, Adarsh is gaining industry experience as an Executive Intern in Clinical Research and Pharmacovigilance at Beaver Life Science, where he's involved in drug development and safety monitoring. Bringing together academic insight, hands-on research, and international collaboration, Adarsh aims to contribute to evidence-informed healthcare solutions that are both innovative and inclusive.

PUBLICATIONS COMMITTEE

CO-CHAIR



Kevin H. Li

University of Washington, USA

Kevin H. Li is a Postdoctoral HEOR Fellow with the University of Washington CHOICE Institute in conjunction with Sanofi. He earned his Pharm.D. and M.S. in HEOR from the University of Washington School of Pharmacy. He has contributed to a wide range of projects in health policy, economic modeling, evidence synthesis, and real-world evidence from academic and professional experiences across the molecular diagnostics, consulting, and pharmaceutical industry fields. He is excited to serve as co-chair of the ISPOR Student Network Publications Committee for the upcoming year.



Daniel Umoru

Chapman University, USA

Daniel Ojonugwa Umoru is a Nigerian-trained pharmacist and Ph.D. student in Pharmaceutical Economics and Policy at Chapman University School of Pharmacy in Irvine, California. He is passionate about evidence generation and Health Economics and Outcomes Research (HEOR). His current projects include a cost-effectiveness analysis of antibiotic therapies, a safety analysis of GLP-1 receptor agonists using the FDA Adverse Event Reporting System (FAERS), and a national study on oncology pharmacists' adoption of pharmacogenomic services. He also led a study on the prevalence and disparities of diabetes in the U.S., examining visit patterns by age, gender, and race. Daniel has presented at ISPOR conferences in Atlanta and Montreal, including a 2025 presentation on trends in FDA-approved breast cancer drugs. He earned second place for the Eric M. Scandrett Research Award and is proficient in SPSS, SAS, R Studio, and NAMCS data. He currently serves as Co-Chair of the ISPOR Student Network Publications Committee (2025-2026).

SURVEY AND EVALUATION COMMITTEE

CO-CHAIR



Emeka Elvis Duru

University of Utah, USA

Elvis is a PhD student in the department of pharmacotherapy. He began his academic journey at the University of Nigeria Nsukka (UNN), where he obtained a BPharm degree in 2019. His foundation in pharmacy was further enriched by his valuable internship experience at the Nigerian Army Reference Hospital in Lagos, Nigeria. There, he worked at the Drug Revolving Scheme (DRS) and was opportune to manage the procurement unit of the National Health Insurance Scheme (NHIS) pharmacy. Upon completing his internship, Elvis secured a position at the Federal Ministry of Health, Nigeria where he deepened his understanding of the healthcare system and its challenges. This experience played a crucial role in motivating him to pursue a PhD program, with a focus on addressing the pressing issues in healthcare and pharmaceuticals. His research interests include health policy, evidence synthesis, cost-effectiveness analysis, and real-world evidence. Motivated by his background and experiences, Elvis aims to develop and implement innovative health policies that optimize healthcare delivery and improve overall patient outcomes.



Godwin Ejike Okoye

University of Texas at Austin, USA

Godwin Okoye is a Graduate Research Assistant and PhD candidate at The University of Texas at Austin. His work focuses on leveraging real-world data to provide actionable insights on chronic diseases, understand treatment patterns, treatment outcomes, healthcare use, cost, access, and disparities. He is passionate about generating evidence to inform better clinical and economic decision-making in healthcare. Outside of research, he enjoys gaming and building Legos.

THANK YOU TO THE 2024-2025 COMMITTEES

Regional Leads

Gautam Sahu, National Institute of Pharmaceutical Education and Research (NIPER) Mohali, Punjab India

Khaled Alamri, Pharmaceutical Sciences, Health Outcomes Research University of Cincinnati, USA

Natalia Saade, Pontificia Universidad Javeriana, Colombia

Education Committee

Chairs:

Ilke Akpinar, University of Alberta, Canada

Olajumoke Olateju, University of Houston, USA

Members:

Ker Ro Toh, London School of Economics and Political Science (LSE), UK

Kamaljeet, ISF College of Pharmacy, India

Deeksha Gupta, University of South Carolina, USA

Yu-Hua Fu, University of Maryland, USA

Omkar Ghodke, University of Mississippi, USA

Kwame Adjei, Florida Agricultural and Mechanical University, USA

Junaid KP, Postgraduate Institute of Medical Education and Research, Chandigarh, India

Event Planning Committee

Chairs:

Jordan Skiera, Samford University McWhorter School of Pharmacy, USA

Ivy, Nga-Weng Leong, University of Mississippi, USA

Members:

Helene Deconinck, University of Aberdeen (Scotland), Germany

Ibrahim Alfayoumi, Auburn University, USA

Dan Wei, Icahn School of Medicine at Mount Sinai, USA

Niamh Boyle, University of South Wales, UK

Neto Coulibaly, Brown University, USA

Kristen Gregory, University of Arizona, USA

Monika Szeliga, Thomas Jefferson University, USA

Safalta Khadka, West Virginia University, USA

Muhammed Rashid, University of Utah, USA

THANK YOU TO THE 2024-2025 COMMITTEES

Publications Committee

Chairs:

Anu Bompelli, University of Minnesota, USA

Kingsley Essel Arthur, Kwame Nkrumah University of Science and Technology, Ghana

Members:

Godwin Okoye, University of Texas at Austin, USA

Maryam Pathan, West Virginia University, USA

Bilqees Fatima, University of Houston, USA

Tanka P Ojha, University of Newcastle, Australia

Chinora Laura Ezekwe, University of Tsukuba, Japan

Eugene Kallson, University of Ghana - School of Public Health, Ghana

Daniel Umoru, Chapman University, USA

Mouna Dardouri, University of Colorado Anschutz Medical Campus, USA

Harsimran Kaur, Manipal Academy of Higher Education, India

Maddalena Centanni, Uppsala University, Sweden

Survey and Evaluation Committee

Chairs:

Kenechukwu Ben-Umeh, University of Utah, USA

Lane Carrandi, Monash University, Australia

Members:

Jillur Rahim, University of Alabama at Birmingham, USA

Ravi Upadhyay, University of Arkansas for Medical Sciences, USA

Emeka Elvis Duru, University of Utah, USA

Yare Belete Belay, Monash University, Australia

Julianne Mercer, University of Texas at Austin, USA

Ramez Rizk, University of Rhode Island, USA

Tanyaradzwa Mambo, Mercer University, USA

Javeria Khalid, University of Houston, USA

ISPOR ANNUAL 2025

Montreal, Canada



ISPOR EUROPE 2024 STUDENT RESEARCH SPOTLIGHT

PRESENTERS



Rawan A. Almasuood,
PharmD, MS Candidate
Florida A&M University
Tallahassee, FL, USA



Minseon V. Chung,
PharmD, MPH, MS
Candidate
University of Washington
Seattle, WA, USA



Nuoming Xu, MS Candidate
Tianjin University
Tianjin, China



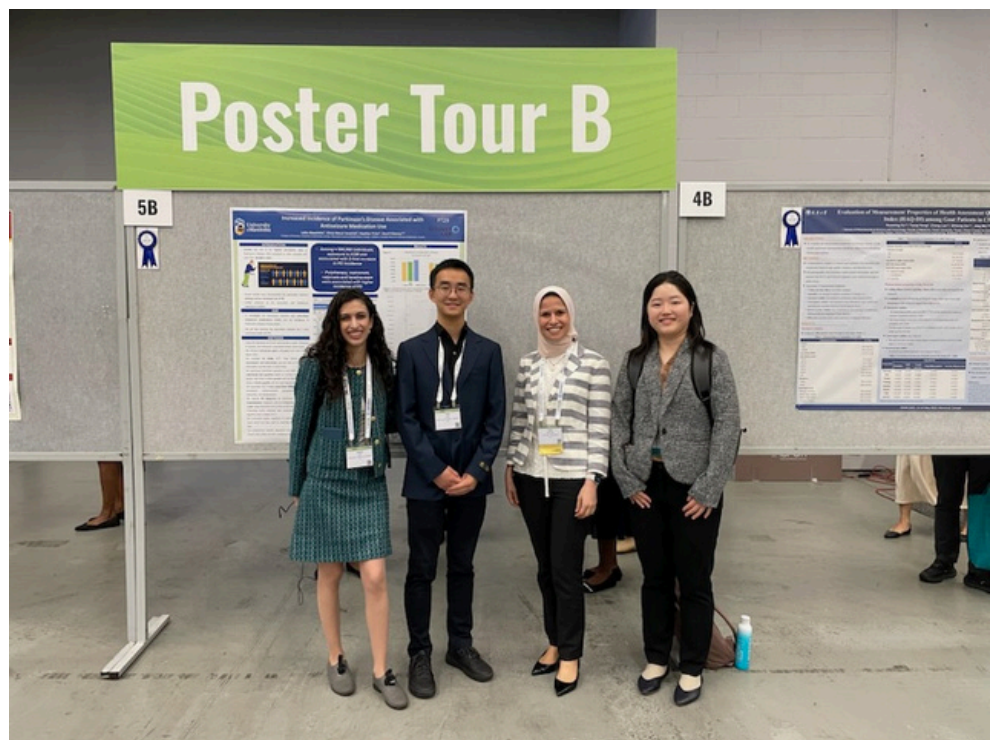
Laila Aboulatta, PharmD,
PhD Candidate
University of Manitoba
Winnipeg, MB, CAN



Yizhi Liang, MS, PhD
Candidate
University of Southern California
Los Angeles, CA, USA



ISPOR Student Network
Event Planning Committee



ISPOR ANNUAL 2025 STUDENT RESEARCH SPOTLIGHT

Presenters



Minseon Chung

University of Washington, USA

Minseon is a first-year master's student in Health Economics and Outcomes Research at the CHOICE Institute, University of Washington. She developed her interest in health economics and real-world evidence through participating research projects analyzing national cohort data of pregnant women, identifying associations between socioeconomic factors and perinatal substance use. Her passion for HEOR continued to grow through patient interactions and interdisciplinary collaborations during her clinical rotations, which helped her recognize the critical role of value assessment in healthcare utilization and clinical decision-making. After earning her PharmD and MPH, Minseon embarked on her training as an MS fellow at the CHOICE Institute, where she is honing her skillsets in HEOR under the guidance of distinguished faculty. Her current research interests focus on value assessment and predictive modeling.



Laila Aboulatta

University of Manitoba, Canada

Laila is a final-year Ph.D. candidate at the College of Pharmacy, University of Manitoba, Canada, specializing in pharmacoepidemiology. She holds a PharmD and a bachelor's in pharmaceutical sciences from Alexandria University and completed a research fellowship in Hospital Pharmaceutics at Showa University, Japan. Her clinical experience as a hospital pharmacist in public and private hospitals sparked her interest in pharmacoepidemiology, particularly in addressing maternal and neonatal health challenges in developing countries. Laila's research focuses on pharmacoepidemiology, perinatal epidemiology, and drug safety, with her current work examining the impact of COVID-19 on maternal and neonatal outcomes. She aims to inform future public health strategies to improve outcomes for mothers and infants during pandemics.

ISPOR ANNUAL 2025

STUDENT RESEARCH SPOTLIGHT

Presenters



Rawan Almasuood

Florida A&M University, USA

Rawan is a master's student in Pharmaceutical Sciences with a concentration in Pharmacoeconomics at Florida A&M University. She holds a PharmD degree and brings professional experience in clinical pharmacy, real-world data analysis, and the pharmaceutical industry. Her research interests include health economic modeling, access policy, and health technology assessment. As a Saudi researcher, she is passionate about bridging global perspectives in health outcomes research and contributing to evidence-based decision-making in both local and international contexts. She has four peer-reviewed publications and is currently involved in several ongoing projects in cost-effectiveness analysis, budget impact modeling, and pharmaceutical policy.



Nuoming Xu

Tianjin University, China

Nuoming Xu is a second-year graduate student at the School of Pharmaceutical Science and Technology, Tianjin University, majoring in Health and Pharmaceutical Administration. Under the supervision of Professor Jing Wu, her research interests are centered on health-related quality of life (HRQoL) and health economic evaluation. She has been actively involved in a variety of research projects, such as pharmacoeconomic evaluations, validation and comparison of HRQoL instruments, and health policy assessments. To date, she has one Chinese article awaiting publication, one English article prepared for submission, and another English article currently in the writing process. Nuoming has also successfully obtained the combined MA-PhD program qualification, and she plans to further pursue her research interests in these fields. Her research aims to provide evidence-based insights to improve patient care and healthcare decision-making. She aspired to contribute to the development of more effective and equitable health policies through rigorous research.

ISPOR ANNUAL 2025 STUDENT RESEARCH SPOTLIGHT

Presenters



Yizhi Liang

USC Mann School of Pharmacy and Pharmaceutical Sciences, USA

Yizhi Liang, MS, is a PhD student in Health Economics at the Department of Pharmaceutical and Health Economics at the USC Mann School of Pharmacy and Pharmaceutical Sciences. His research focuses on cost-effectiveness analysis, value of information analysis, causal inference, and Bayesian mathematical modeling. He works to enhance the evaluation of health outcomes and inform health decision-making.

Yizhi's scholarly contributions include publications on health disparities and the economic evaluation of health programs, featured in prestigious journals such as *Applied Health Economics and Health Policy*, *Patient Education and Counseling*, and the *Journal of the American Academy of Dermatology*. He has presented his research findings at prominent conferences, earning recognition at the Society for Medical Decision Making Annual Meeting 2023, ISPOR 2024, and the 2025 Western Pharmacoeconomics Conference (WPEC).

He holds a Master of Science in Global Health and Population from Harvard University and dual bachelor's degrees in public health and financial management from Sichuan University. Yizhi is committed to advancing the field of health economics through rigorous research and impactful publications.

ISPOR ANNUAL 2025 PANEL DISCUSSION AND ROUNDTABLE

BRIDGING EVIDENCE & ACTION: MULTI-STAKEHOLDER COLLABORATIONS FOR VALUE-BASED HEALTHCARE DECISION-MAKING

- Explore how collaboration across academia, industry, and policy can drive value-based healthcare and improve decision-making.
- Gain insights into the role of HEOR in bridging evidence generation with real-world healthcare impact.
- Join an interactive discussion on aligning diverse stakeholder interests to shape policy and deliver patient-centered, sustainable care.

PANELISTS



Kate Williams, PhD
Director of Patient-Centered Outcomes Research at Acaster Lloyd Consulting



Robert McQueen, PhD
Director of the Center for Pharmaceutical Value (pValue) at the University of Colorado Skaggs School of Pharmacy and Pharmaceutical Sciences (CU-SSPSS)

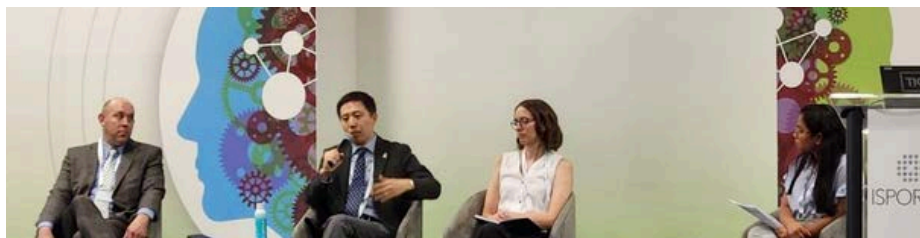


Shawn Du, PhD
Director, Real World Value & Evidence, Johnson & Johnson



Safalta Khadka
Safalta Khadka, MS
PhD Candidate, Pharmaceutical Systems and Policy
West Virginia University

MODERATOR



ISPOR ANNUAL 2025 STUDENT RESEARCH COMPETITION



At the Student Research Competition, nine teams of students competed in a bracket-style tournament featuring several rounds of multiple choice and free answer questions.



Zeba Kahn served as the MC, while Steve Marx and Caitlyn Solem acted as judges.



After three rounds of gameplay, the University of Illinois at Chicago placed first, the University of Arkansas placed second, and the University of Texas at Austin placed third. Each of the top three teams received a monetary award. Following the event, a reception was hosted by NPC.

We hope you'll join us for the next Research Competition in May 2026 in Philadelphia.

WEBINARS

**Missed a webinar?
Catch it on demand!**



ISPOR STUDENT NETWORK WEBINAR



CAUSAL AI IN HEOR: BEYOND PREDICTIONS TO ACTIONABLE INSIGHTS

LEARNING OBJECTIVES

- Understand the fundamentals of causal inference in AI
- Explore practical applications of causal inference in AI
- Learn key methodologies and tools for causal inference in AI



Uwe Siebert, MD, ScD

Chair & Professor, Department of
Public Health, Medical Decision
Making and HTA, UMIT TIROL, Austria



Lizheng Shi, PhD

Neal A. and Mary Vanselow Endowed
Chair & Professor, Department of
Health Policy and Management
Director, Health Systems Analytics
Research Center, Tulane University,
USA

ISPOR STUDENT NETWORK WEBINAR



ISPOR STUDENT NETWORK

Causal AI in HEOR: Beyond Predictions to Actionable Insights

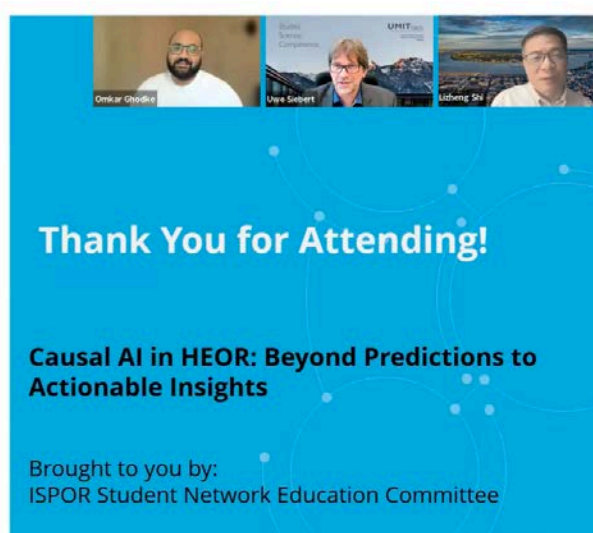
This webinar explored the growing importance of Causal AI in addressing key challenges in Health Economics and Outcomes Research (HEOR). As investment in AI accelerates, concerns around bias, transparency, and the 'black box' nature of traditional models have become increasingly prominent. While frameworks such as Responsible AI and Explainable AI have made progress, they often fell short in identifying the causal relationships essential for evaluating healthcare interventions.

The session highlighted how Causal AI offers a more robust and ethical approach by uncovering cause-and-effect relationships, leading to better decision-making, more accurate predictions, and more equitable health outcomes. Unlike classical machine learning, which primarily identifies patterns, causal inference provides deeper insights into why those patterns occur—an essential distinction in the context of HEOR.

Key topics covered included:

- A foundational overview of causal inference, including concepts like causality, correlation, and confounding factors.
- Real-world applications demonstrating how causal methods have been used to reduce bias, improve fairness, and enhance the validity of AI models in healthcare.
- An introduction to tools and methodologies such as causal diagrams and machine learning algorithms tailored for causal analysis.

Participants gained a deeper understanding of how Causal AI can lead to more transparent, fair, and effective use of AI in healthcare research and policy.



HELPFUL STUDENT INFORMATION



ISPOR STUDENT CONTENT CORNER

SHARE YOUR VOICE ON ISPOR COMMUNITIES!



GET INVOLVED:

Share your HEOR-related projects, professional interests, questions, or polls in the Student Content Corner.

Keep it HEOR-focused to connect with like-minded peers and experts.



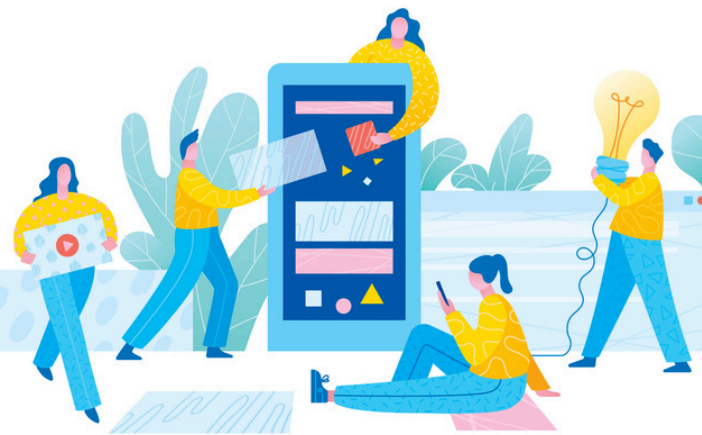
HOW TO POST:

- Head to the All-Member Community on ISPOR Communities
- Use the “add a tag” option and tag your post with:
 - #ISPORStudents
 - #ISPORStudentNetwork
 - #StudentChapter or any other relevant tag

Need help? Email us at studentnetwork@ispor.org

ISPOR Career Center

Advance your career by working for the leading professional society in health economics and outcomes research.



WHY ISPOR?

- Over 25 years of global leadership in HEOR
- Host of top-tier conferences, publications, education, and policy-shaping tools
- A catalyst for innovation in health decision-making

CURRENT OPEN ROLES:

- Coordinator, Meeting Content (Global Events)
- Executive Director, ISPOR Institute for Healthcare Transformation
- Manager, Marketing (Marketing & Communications)

[Apply Today!](#)



FEATURED ARTICLES



EDITOR'S CHOICE

 ISPOR

Value in Health

Value

A journal of the professional society
for health economics and outcomes research

Quantifying the Impact of Intervention on Health Outcomes: A Tool for Assessing Incremental Changes to Life Expectancy.

SINGH ET. AL.

Singh et. al., presents a methodological tool designed to estimate changes in life expectancy based on life tables. The method modifies standard life tables by adjusting age-specific mortality rates based on relative risks derived from epidemiological studies. These modified tables can estimate the impact of interventions, exposures, or behaviors in terms of life year gains or losses. The approach is designed for use in health outcomes research and is particularly relevant in health technology assessment contexts. It provides an alternative to more complex or resource-intensive methods, such as those based on quality-adjusted life years, by directly estimating changes in life expectancy. The tool thus offers a more intuitive and accessible measure for understanding the population-level effects of health risks or interventions.

Key advantages of the tool include its structured and simplified framework, modest data requirements, and ease of integration into broader health economic evaluations. However, its outputs depend heavily on the quality of input data, especially the reliability of relative risk estimates and baseline mortality figures. The assumption that relative risk remains constant across age groups and over time may not hold in all scenarios, which can limit the generalizability of results.

Despite these limitations, the method provides a transparent and interpretable means of estimating the effects of health interventions on longevity. It supports a more direct translation of epidemiological data into outcomes relevant for public health and policy decision-making. The tool can be particularly valuable in burden-of-disease assessments and cost-effectiveness models where absolute life-year impact is a meaningful endpoint.

To realize its full potential, future applications may benefit from alignment with existing HTA methodologies and consideration of how age-varying or time-dependent risk might be incorporated. If implemented with attention to data quality and methodological assumptions, this tool can enhance the ability to connect relative risk evidence to population-level health outcomes in a clear and actionable way.

TIED TO THE PAST, UNPREPARED FOR THE FUTURE: MEETING THE ALZHEIMER'S DISEASE CHALLENGE WITH HEOR

BETH FAND INCOLLINGO

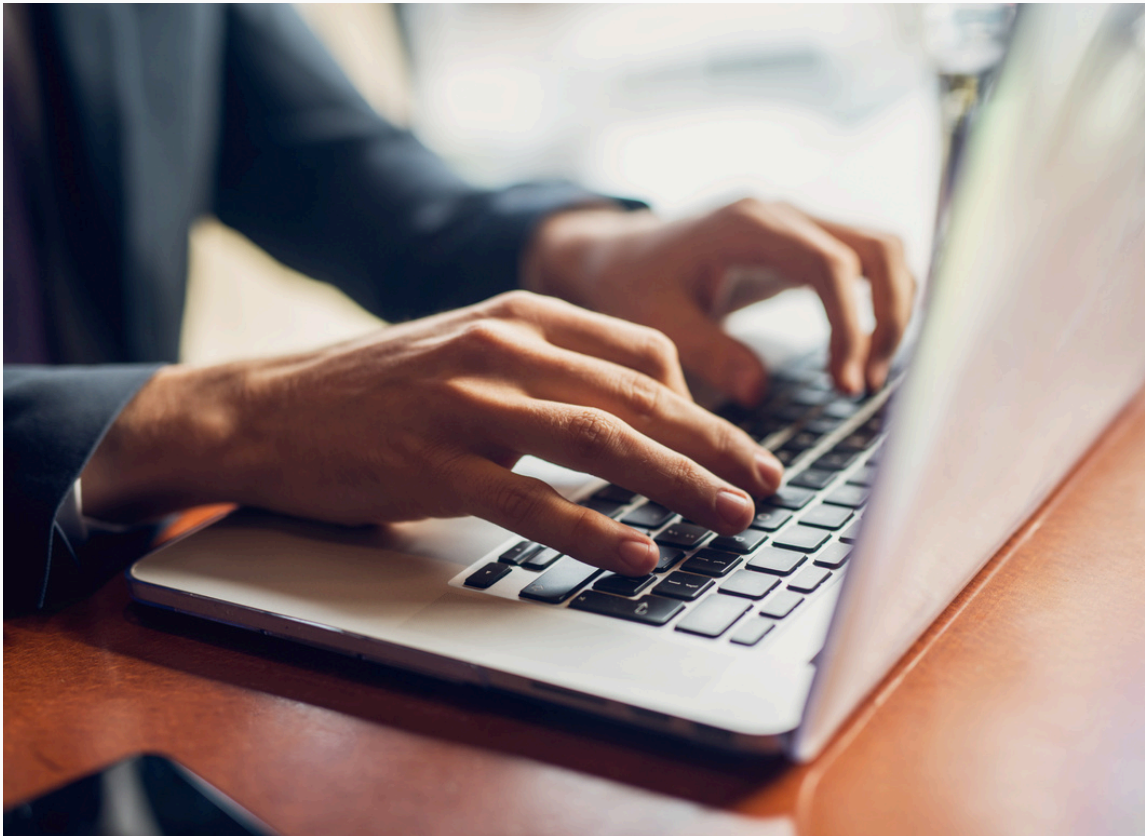
Alzheimer's disease (AD) poses a rapidly growing global challenge, with annual costs exceeding \$1.3 trillion and cases expected to nearly double every 20 years. While new drugs like lecanemab and donanemab offer hope by slowing disease progression, their high costs and limited availability raise concerns about affordability and access. Much of the burden still falls on unpaid family caregivers, whose sacrifices often go unrecognized by policymakers. Despite the immense societal impact, governments frequently under-prioritize AD due to misconceptions, stigma, and age-related biases.

Widespread misunderstanding of dementia contributes to under-diagnosis, with about 75 percent of cases globally going unrecognized, especially in low- and middle-income countries. Alzheimer's Disease International (ADI) advocates for increased efforts in public education, earlier diagnosis, and risk reduction based on modifiable factors such as hypertension, hearing loss, and diabetes. Yet, awareness campaigns and behavior change remain limited, and stigma continues to impede timely care and support for affected individuals and their families. Emerging treatments targeting amyloid plaques offer promise, particularly if administered before symptoms develop.

Advances in diagnostics, including recently approved blood tests, may enable earlier intervention, potentially improving outcomes. HEOR models are crucial to evaluating the long-term value of these therapies and guiding cost-effective policy decisions. Pilot programs like the US GUIDE Model demonstrate innovative approaches to coordinating care and alleviating caregiver burden, although global implementation remains inconsistent. Addressing AD requires a multi-sector response that goes beyond biomedical research to include public health initiatives, caregiver support, and enhanced awareness. Advocates call for a scale of investment and mobilization comparable to past public health successes, such as the AIDS response. Without coordinated action aligned with the World Health Organization's Global Action Plan, progress will remain limited, leaving millions vulnerable to the devastating personal and societal consequences of Alzheimer's disease.



SKILL UP: TUFTS-CEVR CEA REGISTRY



CEVRCenter for the Evaluation of Value
and Risk in Health

+

CEA

REGISTRY

FREE CEA REGISTRY ACCESS

New ISPOR Student Member Benefit!

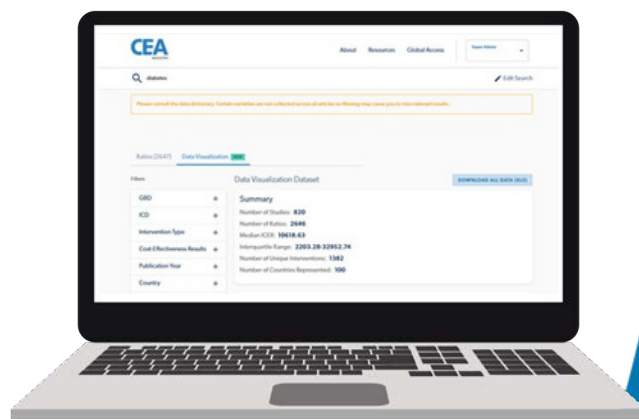
The Tufts-CEVR CEA registry is a comprehensive database of more than 14,500 cost-utility analyses. ISPOR student members now have access to the premium version of this powerful tool for free!

Featuring:

- 14,500+ cost-utility analyses
- 55,000+ utility weights
- 41,500+ ratios

How can the CEA Registry help me?

- Speed up your systematic literature reviews and cost-effectiveness modeling
- Search and export results, inputs, and dozens of variables from the literature
- Click **here** for a list of published article that used the CEA Registry for inspiration



Click **here** to register!

ISPOR STUDENT RESEARCH SPOTLIGHT



DANIEL OJONUGWA UMORU



Daniel Ojonugwa Umoru is a Nigerian-trained pharmacist and Ph.D. student in Pharmaceutical Economics and Policy at Chapman University School of Pharmacy in Irvine, California. He is passionate about evidence generation and Health Economics and Outcomes Research (HEOR). His current projects include a cost-effectiveness analysis of antibiotic therapies, a safety analysis of GLP-1 receptor agonists using the FDA Adverse Event Reporting System (FAERS), and a national study on oncology pharmacists' adoption of pharmacogenomic services. He also led a study on the prevalence and disparities of diabetes in the U.S., examining visit patterns by age, gender, and race. Daniel has presented at ISPOR conferences in Atlanta and Montreal, including a 2025 presentation on trends in FDA-approved breast cancer drugs. He earned second place for the Eric M. Scandrett Research Award and is proficient in SPSS, SAS, R Studio, and NAMCS data. He currently serves as Co-Chair of the ISPOR Student Network Publications Committee (2025-2026).

Research Interests

My research interests are in HEOR, focusing on economic evaluation, real-world evidence, pharmacogenomics, and health disparities. I'm passionate about generating evidence to inform policy, improve access, and support value-based care. Currently, I am working on several projects. One is a cost-effectiveness analysis comparing Recarbrio (imipenem/cilastatin/relebactam) with Avycaz (ceftazidime/avibactam) in treating multidrug-resistant infections. I'm also conducting a national qualitative study exploring oncology pharmacists' knowledge, attitudes, and willingness to adopt pharmacogenomic services in the U.S. healthcare system. Additionally, I'm analyzing GLP-1 receptor agonist (GLP-1 RA) drugs using data from the FDA Adverse Event Reporting System (FAERS) to assess their safety profiles. In past work, I led a cross-sectional study using NAMCS data to assess diabetes prevalence and how sociodemographic factors influence physician visit frequency. I also presented a poster at ISPOR 2025 on trends in FDA-approved breast cancer drugs over the last decade.

My clinical experience as a pharmacist in Nigeria, where cost limited access to essential medicines, sparked my passion for improving healthcare resource allocation. Key findings from my research highlight disparities in diabetes care by race and gender, gaps in pharmacogenomics adoption, and provide real-world safety data on GLP-1 RAs. Collectively, my work contributes to improving clinical decision-making, guiding policy, and supporting equitable access to effective therapies.

Challenges

One major challenge I faced was limited access to complete real-world datasets, which affected the depth of analysis in some projects. I overcame this by utilizing publicly available national databases like NAMCS and FAERS, and by seeking institutional support for additional data access. Another challenge was recruiting oncology pharmacists for my qualitative study; I addressed this by partnering with professional organizations and leveraging snowball sampling. Time management across multiple projects was also demanding, but I overcame this through careful planning, setting realistic timelines, and maintaining consistent communication with my research advisors and collaborators.

Personal and Professional Growth

My research experience has profoundly shaped both my personal and professional growth. On a personal level, it has strengthened my resilience, adaptability, and critical thinking. Navigating challenges such as data limitations, participant recruitment, and balancing multiple projects has taught me to remain solution-focused and patient throughout the research process. Each obstacle became an opportunity to grow, enhancing my confidence and perseverance. Professionally, my experience has deepened my expertise in HEOR, sharpened my skills in data analysis, and broadened my understanding of healthcare systems. Working with large datasets like NAMCS and FAERS, conducting qualitative interviews, and performing cost-effectiveness modeling have equipped me with a diverse methodological toolkit. Presenting at international conferences like ISPOR in Atlanta and Montreal has improved my scientific communication skills and expanded my professional network. Serving on leadership roles at ISPOR Student Chapter and ISPOR Student Network has further enhanced my leadership and collaboration abilities, while reinforcing my commitment to knowledge dissemination and student engagement in HEOR.

Most importantly, this journey has solidified my passion for evidence generation and value-based healthcare. It has affirmed my long-term goal of contributing to health policy and pharmaceutical decision-making through impactful research. I now approach problems with a research-oriented mindset—constantly asking how data can improve outcomes, reduce disparities, and inform better health policy. My research experience continues to shape me into a thoughtful, well-rounded health economics researcher and future leader in the field.

Journey with the ISPOR Student Network

The best part of my journey with the ISPOR Student Network has been the sense of community, mentorship, and exposure to global perspectives in HEOR. Personally, it has boosted my confidence and strengthened my communication and organizational skills. Academically, ISPOR resources and webinars have deepened my understanding of HEOR methodologies and trends. The network has also inspired research ideas and collaborations, significantly enhancing my research skills. ISPOR has not only enriched my research journey but also shaped my professional identity, fueling my passion for generating evidence that supports value-based, equitable healthcare.

HARSIMRAN KAUR



Dr. Harsimran Kaur is a final-year Ph.D. candidate at the Manipal College of Pharmaceutical Sciences, Manipal Academy of Higher Education, Karnataka, India. Her research interests include health economics, evidence synthesis, pharmacoepidemiology, pediatric neurology, and clinical toxicology. She was awarded the Gold Medal for academic excellence in her Doctor of Pharmacy (Pharm.D) program. Dr. Kaur has presented her research at several international conferences, supported by multiple competitive grants. Most recently, she received the ISPOR Student Travel Grant to present at the ISPOR 2025 Annual Conference. Beyond her academic pursuits, she is a passionate writer and has published a collection of poetry. ISPOR has played a key role in shaping her interest in health economics, and she aspires to build a career as a health economist.

Research Interests

My research areas span health economics, evidence synthesis, pharmacoepidemiology, pediatric neurology, and clinical toxicology. My introduction to health economic research began when our hospital faced a formulary decision between two procedural sedatives for pediatric use. This led us to design and conduct a randomized controlled trial comparing melatonin and triclofos. Given the policy implications for hospital procurement, we incorporated a cost-effectiveness analysis alongside the trial. Through this study, I gained foundational knowledge in economic modeling and decision analysis. Our findings showed that melatonin was more cost-effective than triclofos, directly influencing the hospital's procurement policy and ensuring more cost-efficient patient care.

Building on this experience, I explored evidence synthesis including diagnostic and prognostic test accuracy meta-analyses, a less commonly pursued area in meta-analysis research. I focused on paraquat poisoning, a highly toxic pesticide with significant clinical impact. Our work identified reliable prognostic markers that helped guide physicians in determining the timing and intensity of treatment for affected patients.

Challenges

Every research project brings its own set of challenges. During the economic evaluation alongside the clinical trial, the primary challenge was maintaining protocol adherence ensuring that each patient received the correct drug and dosage as per the study design. This was addressed through rigorous training of clinical staff and regular monitoring to ensure compliance. In the meta-analysis, the most significant hurdle was pooling results to generate a summary effect estimate, particularly due to limited prior experience with prognostic test accuracy meta-analyses. To overcome this, I undertook self-directed learning in R and Stata, sought mentorship from experienced researchers, and referred to methodological guidelines to ensure accuracy and validity in the analysis.

Personal and Professional Growth

My research journey has played a significant role in shaping both my personal and professional development. What began as a simple clinical dilemma in a hospital setting unexpectedly introduced me to a field that would become a deep passion. Engaging with the complexities of a randomized controlled trial, from study design to execution, was both demanding and transformative. Conducting a cost effectiveness analysis using real world data pushed me to expand my skill set and approach problems with analytical precision. Each project strengthened my confidence and reinforced my commitment to research. I learned that being a researcher is not just about technical expertise, but about curiosity, resilience, and purpose. Tackling a prognostic test accuracy meta analysis, a less conventional area, taught me that even the most challenging tasks can be overcome with persistence and the right support. More importantly, it gave me a skill I will carry forward into future studies. Ultimately, I have come to believe that while we shape our research, it also shapes us into more capable, thoughtful, and passionate individuals. That transformation is one of the most rewarding outcomes of my research experience.

Journey with the ISPOR Student Network

The highlight of my journey with the ISPOR Student Network so far has been serving on the Student Network Publications Committee. When I received the email confirming my election, I was truly delighted. As a passionate writer, being selected for a committee focused on writing felt like a perfect fit. This role has given me valuable insights into how various member groups collaborate to keep the Student Network at the forefront of ISPOR. Professionally, the assignments have strengthened my skills in newsletter writing, and the featured columns have been particularly enlightening for me as a researcher. Overall, the ISPOR Student Network has been a major influence in shaping and deepening my interest in health economics and outcomes research.

STUDENT CHAPTER ANNUAL UPDATES







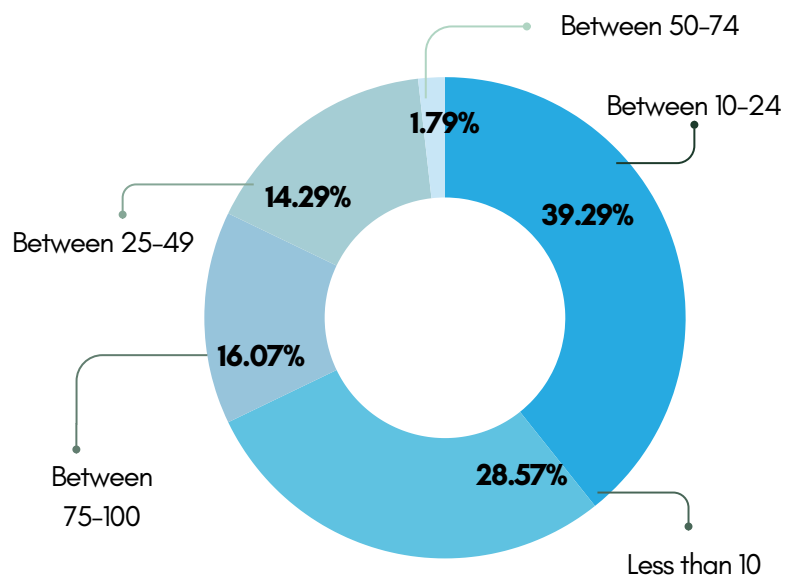
Student Chapter Annual Report

56

student chapters have submitted their annual reports

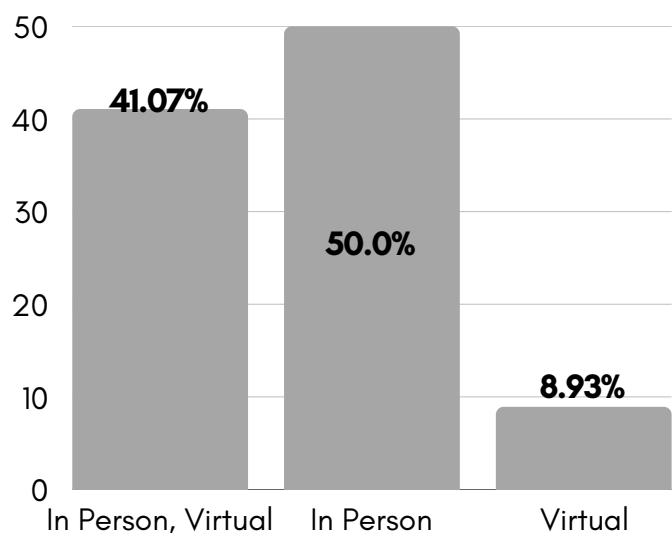
Geographic Distribution

48.21%	North America
35.71%	Asia Pacific
8.93%	Europe
3.57%	Latin America
1.79%	Africa
1.79%	Middle East



Chapter Member Count

Distribution of in-person and virtual events



TYPES OF *Events Organized*

66.07%	Networking / Social events
64.29%	In person scientific educational events
50.0%	Professional development / career related events
32.14%	Webinars and virtual training
23.21%	Journal clubs / Book clubs
21.43%	Joint events with another society (eg, ISPE, AMCP, DIA)
21.43%	Volunteer / community service events
19.64%	Joint events with another student chapter
17.86%	Joint events with an ISPOR regional chapter
5.36%	Prospecting events

Patient Engagement

HTA-focused
Activities

Real World Evidence

Collaborations



35.7% Did not collaborate



32.1% Another Student Organization on campus



12.5% ISPOR Student Chapter



10.7% ISPOR Regional Chapter



3.6% ISPOR Student Chapter, ISPOR Regional Chapter



1.8% ISPOR Student Chapter, another Student Organization on campus



1.8% ISPOR Student Chapter, ISPOR Regional Chapter, Student Organization on campus

HOW TO GET INVOLVED



ISPOR

Are you an ISPOR member yet? Stay up to date on conferences, short courses, communities, and research by becoming a member! Here is the [link](#) on ISPOR memberships. It's never too late to get involved!

ISPOR STUDENT NETWORK

Reach out to studentnetwork@ispor.org to be added to the ISPOR Community for student leaders. The ISPOR Student Network also has 4 committees that student members can serve on!



LOCAL ISPOR STUDENT CHAPTER

Contact your local chapter to learn about upcoming activities and chapter elections. Consider running for an officer position!

CONTACT
US



Questions?

studentnetwork@ispor.org

