



Josh Seidman, PhD, MHS
Avalere Health
Washington DC, USA

Current Value Frameworks – What's New?



Patient-Perspective Value Framework: What's New?

Avalere Health | An Inovalon Company
October 19, 2018

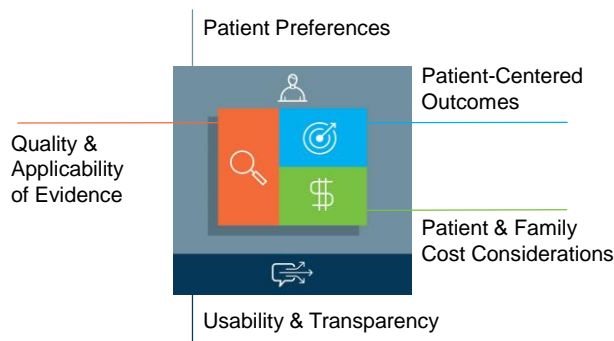
PPVF Initiative Participating Stakeholders



Copyright ©2018, Avalere Health LLC. All Rights Reserved.

Avalere/FasterCures' PPVF Integrates Value, Patient-Centricity & Methodological Expertise into 5 Domains

Avalere/FasterCures Developed a Framework for Patient-Centered Value /



The PPVF was developed through a multi-stakeholder process that relied heavily on patient and key stakeholder research

1 PPVF: Patient-Perspective Value Framework



Copyright ©2018, Avalere Health LLC. All Rights Reserved.

Through First 2 Phases, PPVF Initiative has Driven Forward Patient Voice in Value Assessment

Phase I: Develop a Framework (2016 – 2017)

- ✓ Developed a condition-agnostic framework for patient-centered value assessment
- ✓ Solicited input and synthesized 100 public comments
- ✓ Gathered patient input via surveys/focus groups
- ✓ Released Version 1.0 (infographic and methodology report) to the public¹

Phase II: Test & Refine (2017 – 2018)

- ✓ Quantified scoring methodology & illustrated its components in 2 condition areas²
- ✓ Co-developed with patients a prototype for a shared decision-making (SDM) tool³
- ✓ Created foundation for technical advancement of PPVF components in external value assessment

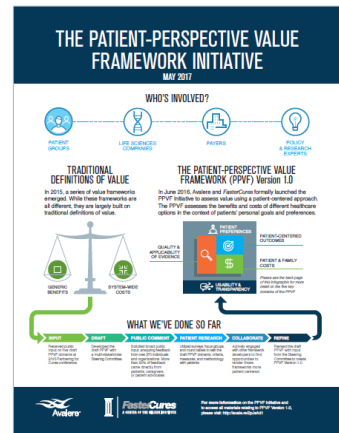
Version 1.0 materials can be found at the following link: <http://avale.re/2pJsAd1>

The PPVF Scoring Methodology can be found at the following link:

<http://avalere.com/expertise/providers/insights/avalere-releases-patient-perspective-value-framework-scoring-methodology-re>

The PPVF-driven SDM tool prototype can be found at the following link:

<http://avalere.com/expertise/providers/insights/developing-a-shared-decision-making-tool-in-collaboration-with-patients-and>



Copyright ©2018, Avalere Health LLC. All Rights Reserved.

Phase III Will Focus on PPVF Applications & Implementation

PPVF Phase III Objective: translate PPVF scoring methodology into shared decision-making tools and evolving value assessment

Advancing Strategic Value Conversations

Goal: Leverage the PPVF's domains, criteria, and measures to reframe the value conversation from the patient's perspective

- **Workstream:** Patient-Oriented Evolution of Value Frameworks
- **Workstream:** Improving Patient-Centered Data Availability

Piloting PPVF-Driven Shared Decision Making (SDM)

Goal: Apply PPVF as SDM tool to support conversations between patients and providers at the point of care

- **Workstream:** SDM Pilot Test

**Longer-Term
Incorporation of
Patient Voice in
Public & Private
Value Initiatives**



Copyright ©2018, Avalere Health LLC. All Rights Reserved.



Advancing Strategic
Value Conversations

Scoring Methodology Evaluates Evidence Based on Rigor & Biases

We developed a rigor/bias adjustment approach that could evaluate both RCTS and RWE

Adjusted for study rigor by
applying a study design score

Adjusted for study biases based on study type
(e.g., randomized vs non-randomized)

| Study Type | Study Design Score |
|----------------------|--------------------|
| Meta-Analyses | 5 |
| RCT | 4 |
| Prospective Cohort | 3 |
| Retrospective Cohort | 2 |
| Case-Control | 1 |

| Randomized | Non-Randomized |
|------------------|--|
| Selection bias | Confounding bias |
| Performance bias | Bias from classification of intervention |
| Detection bias | Bias from deviation from intended intervention |
| Attrition bias | Bias from missing data |
| Reporting bias | Bias from measurement of outcomes |
| Other bias | Bias in results reporting |
| | Other bias |

RCT: Randomized Controlled Trial
RWE: Real World Evidence



Copyright ©2018. Avalere Health LLC. All Rights Reserved.

Working Group has Highlighted Focus on Identifying Patient-Reported RWD Sources & Data Availability Gaps

Working Group Objective

- Leverage PPVF scoring methodology to drive patient-centered value assessment
- Understand the current state of patient-reported RWD sources that may provide data needed to advance value assessment

Work Completed to Date

- Reviewed patient-reported RWD sources across conditions & mapped to PPVF domains, criteria, measures
- Interviewed organizations collecting patient-reported data
- Identified validated instruments that are utilized to collect data from patients

Future Directions

- Continue to investigate data sources
- Align on technical recommendations
- Develop call to action for improved data availability of patient-centered data elements

Note: This offering will utilize Version 2 of the Avalere Market Navigator upon completion



Piloting PPVF-Driven Shared Decision Making (SDM)

Background: Impetus for the PPVF SDM Tool

In an Avalere/Cancer Support Community (CSC) focus group, cancer patients identified the navigational value of the PPVF. They imagined that:

Patients could complete the PPVF-enabled SDM tool prior to meeting with their clinician

Clinicians could review patient PPVF-enabled SDM tool responses prior to consult

Patients and clinicians could review the PPVF-enabled SDM tool together

Research conducted by CancerCare¹ highlighted that patients:

Do not feel like active participants in the development of their care plans

Are often overwhelmed by the process

Do not know what questions to ask

2016 CancerCare Patient Access and Engagement Report
PPVF: Patient-Perspective Value Framework

 Avalere | 11
Copyright ©2018, Avalere Health LLC. All Rights Reserved.

Overview & Aims of the Prototype

The Prototype Is:

Paper-based

Focused in advanced breast cancer

Co-developed with Stage III & IV breast cancer patients

Two Primary Aims of the Prototype:

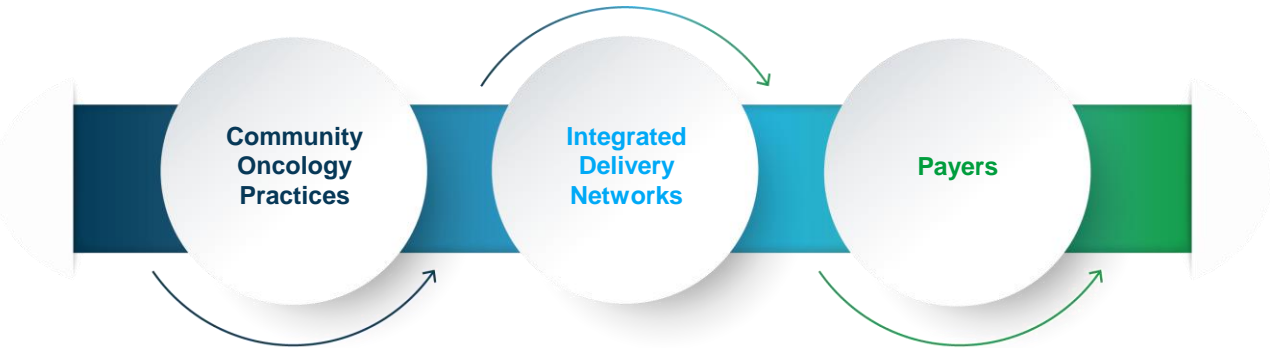
1 Increase the consideration of patient preferences in clinical decision making

2 Help patients and families better understand and plan for their care experience

 Avalere | 12
Copyright ©2018, Avalere Health LLC. All Rights Reserved.

Potential Pilot Partners

Several types of partners have shown interest in piloting the SDM tool:



In process of confirming one partner for the planned PPVF initiative Phase III pilot; maintain interest in identifying additional partners



Avalere | 13

Copyright ©2018, Avalere Health LLC. All Rights Reserved.