

RWE Collaborative: The EHR-Sourced Data Workstream

Biomed Call – April 25, 2024



Real-World Data

Data relating to patient health status and/or the delivery of health care routinely collected from a variety of sources (e.g., registries, wearables, EHRs, etc.)



Real-World Evidence

Clinical evidence about the usage and potential benefits or risks of a medical product derived from analysis of RWD.

Health System Uses of EHR Data to Inform Patient Care Delivery

- Survey of n=16 respondents across a nationally representative sample of US health systems (survey conducted in 2022)
- All respondents (n= 20) reported using an EHR
 - Epic (n = 19; 95%)
 - Cerner (n = 4; 20%)
 - MEDITECH (n = 3; 15%)
 - Allscripts (n = 3; 15)
 - GE Healthcare (n = 2; 10%)
 - EClinicalWorks (n = 2; 10%)
 - athenahealth (n = 1; 5%)

Supporting diagnostic and therapeutic decision making	100%
Accessing and documenting patient information	100%
Accessing and using clinical support tools	88%
Providing clinical alerts and reminders to patients	88%
Prescribing treatments and follow-up regimes	88%
Communicating with colleagues about matters related to patient care	88%
Accessing or creating aggregated information about patient outcomes	81%
Distributing and/or obtaining questionnaires or measures	69%
Accessing and searching medical literature	56%
Obtaining feedback about care experiences from patients	38%

Operationalizing EHR-Sourced Data for Quality, Relevancy, and Reliability

Generate actionable recommendations for stakeholders to improve the quality, relevancy, and reliability of data found in EHRs.

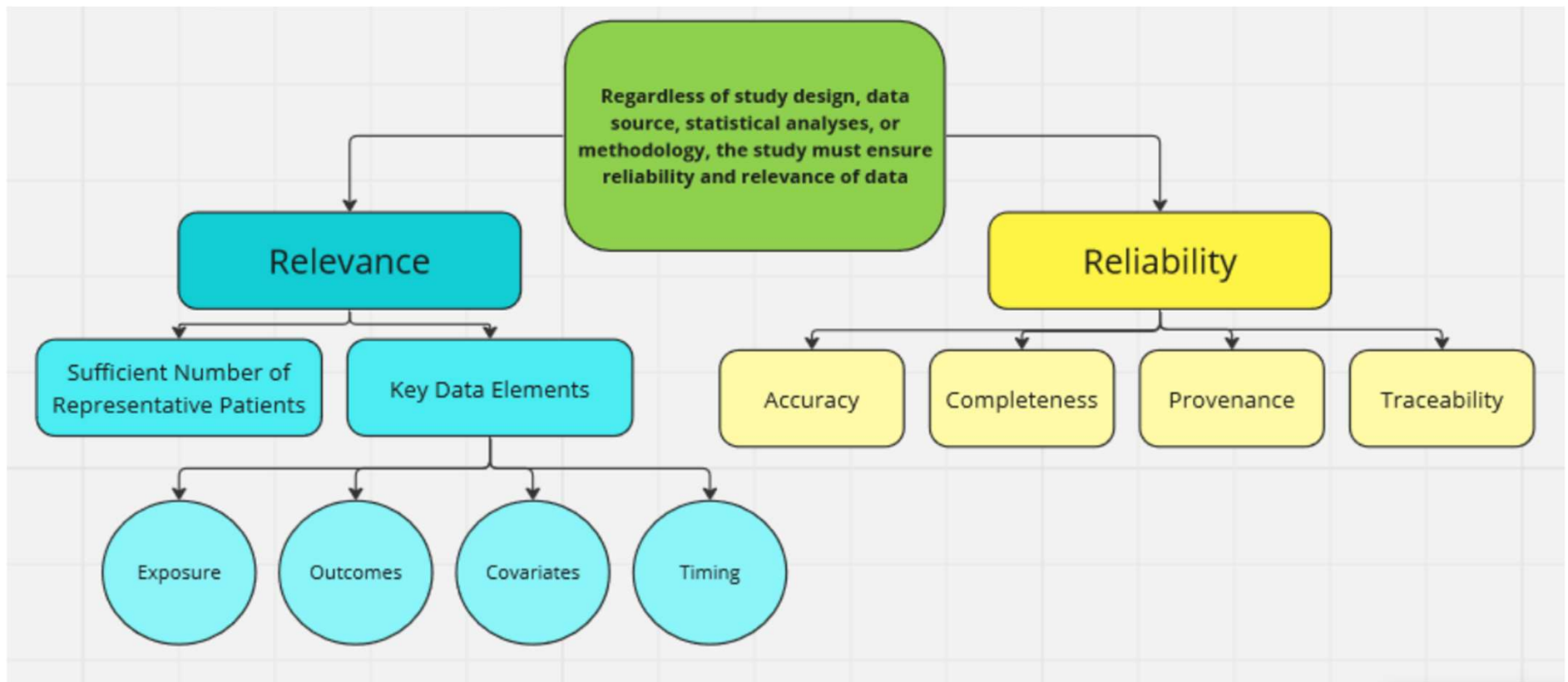
Operationalizing EHR-Sourced Data for Quality, Relevancy, and Reliability, cont.

- Structured text (e.g., ICD-10 codes)
- Unstructured/free text (e.g., clinical notes)
- PGHD uploaded through patient portals
- Lab data uploaded as pdfs
- Pharmacy data included in the EHR



- **Quality:** Accurate, complete, well-sourced, etc.
- **Relevancy:** Useful for the question and generalizable
- **Reliability:** Represents what it claims to represent

How does FDA determine if data are fit-for-purpose?



Challenges with EHR-Sourced Data

- EHRs are not a monolith. All considerations/recommendations are **context dependent**.
 - There is great **heterogeneity** in how data is collected and processed even within a single health system site.
- **Context lost** and **bias introduced** along the EHR data life cycle of source data, curated data, transformed data, and analytic dataset.
 - Lack of **standards** and lack of **data expertise** across stakeholders.
- The entire patient journey is not captured.

General Considerations

- EHRs were/are designed for billing and patient care management
- Mostly generated at the point-of-care by overburdened physicians who want clinically relevant information.
- Aggregated EHR datasets is often curated and transformed by engineers who don't have a health care research background.
- FDA wants to ensure EHR data are of sufficient quality, reliability, and relevancy to inform decisions regarding the safety and efficacy of medical products.

Thank You!

Contact Us



healthpolicy.duke.edu



Subscribe to our monthly newsletter
at dukemargolis@duke.edu



1201 Pennsylvania Avenue, NW,
Suite 500 • Washington, DC 20004



DC office: 202-621-2800
Durham office: 919-419-
2504

Follow Us



DukeMargolis



@dukemargolis



@DukeMargolis



Duke Margolis



Duke-Margolis Institute
For Health Policy