

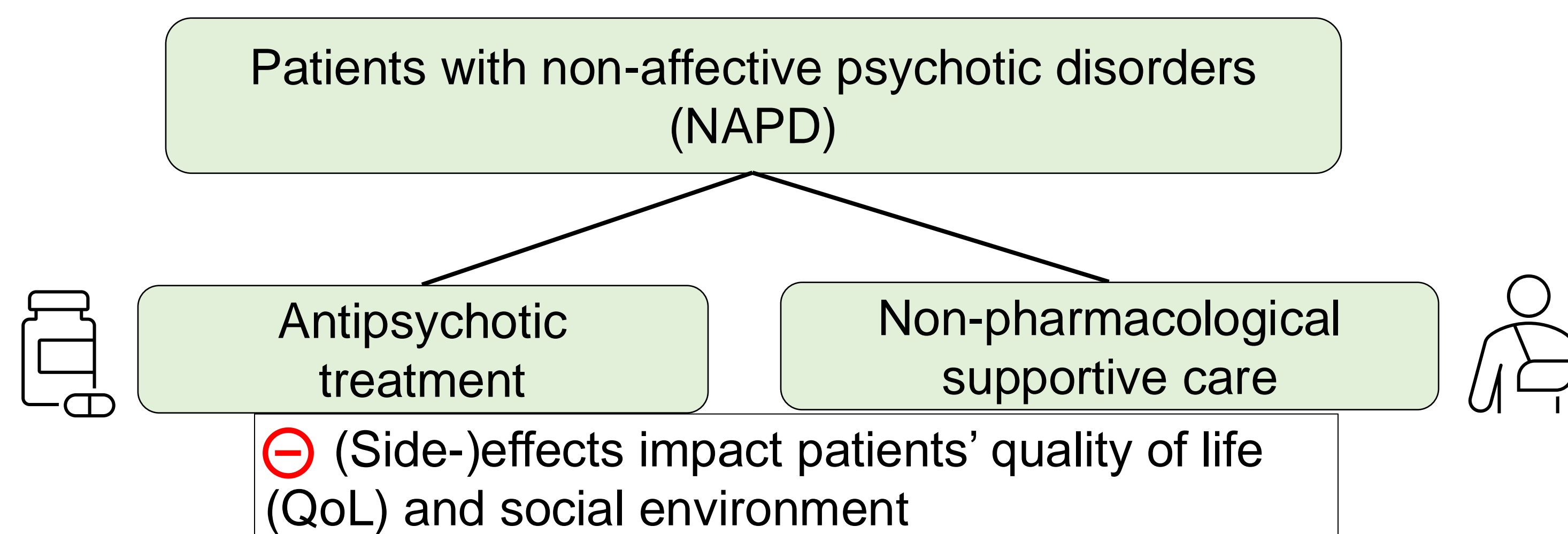
Patient Preferences in Mental Health Disorders: A Qualitative Study Investigating Unmet Medical Needs and Therapy Preferences of Patients with Non-Affective Psychotic Disorder

Io Wens¹, Khadidja Abdallah¹, Anna Van der Vaerent¹, Ruud van Winke^{2,3}, Marc de Hert^{2,3}, Isabelle Huys¹

¹Clinical Pharmacology and Pharmacotherapy, Department of Pharmaceutical and Pharmacological Sciences, KU Leuven, Leuven (Belgium)

²Department of Neuroscience, KU Leuven, Leuven Belgium, ³University Psychiatric Center (UPC), KU Leuven, Belgium

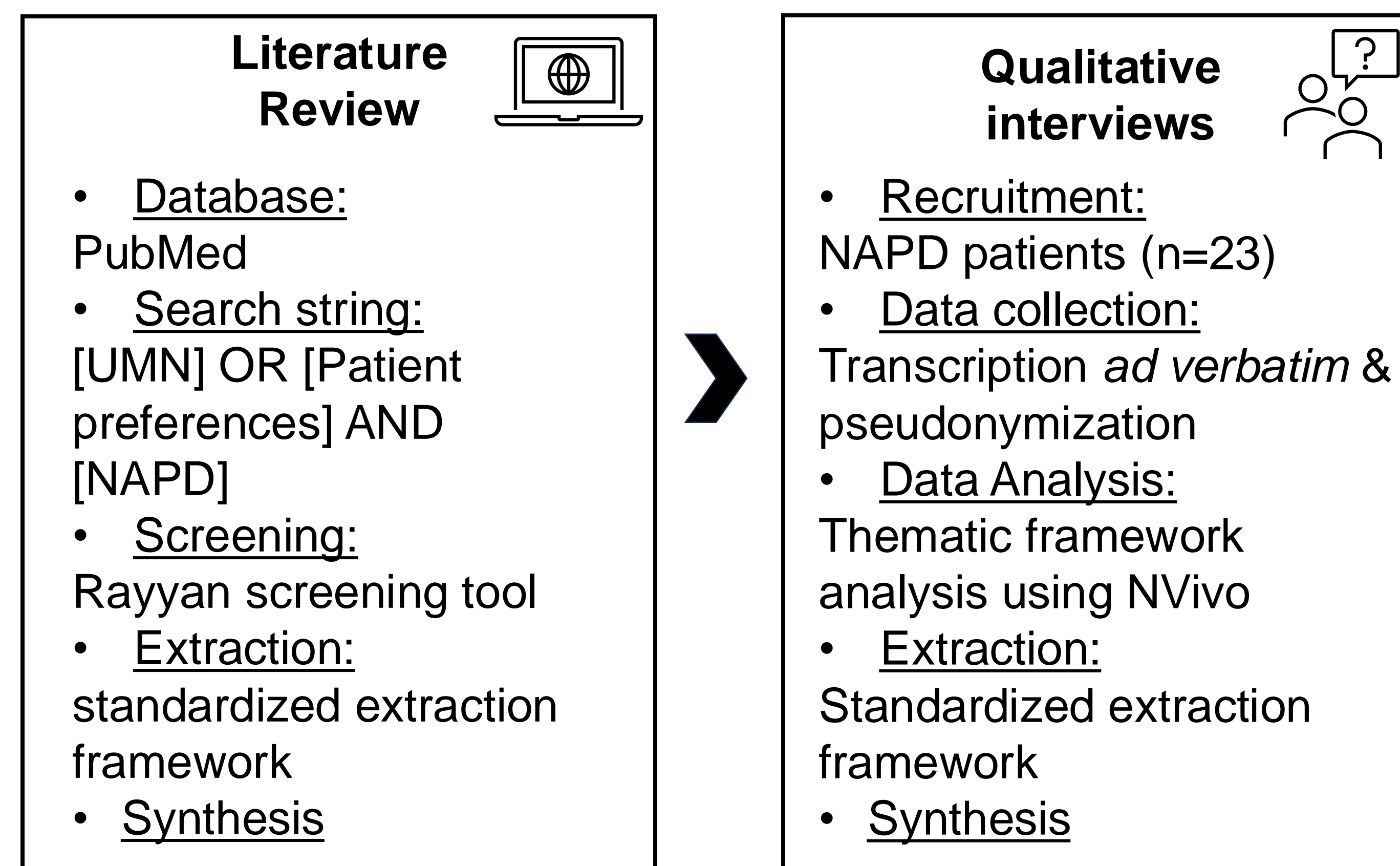
BACKGROUND AND OBJECTIVES



➤ Capture limitations regarding current care management strategies in patients with NAPD

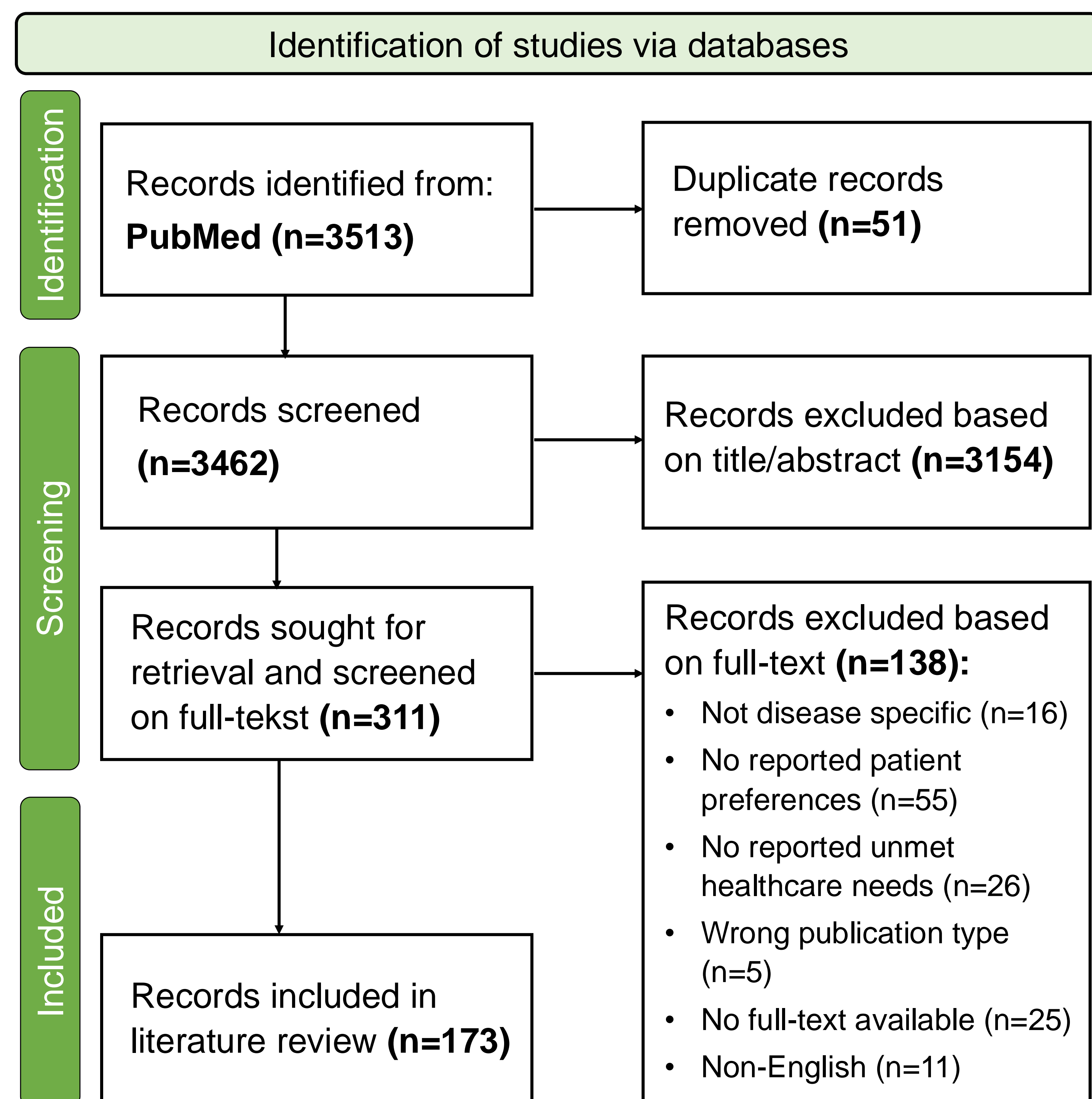
1. To identify patients' unmet medical needs (UMN)
2. To elicit patients' disease and treatment preferences

METHODS

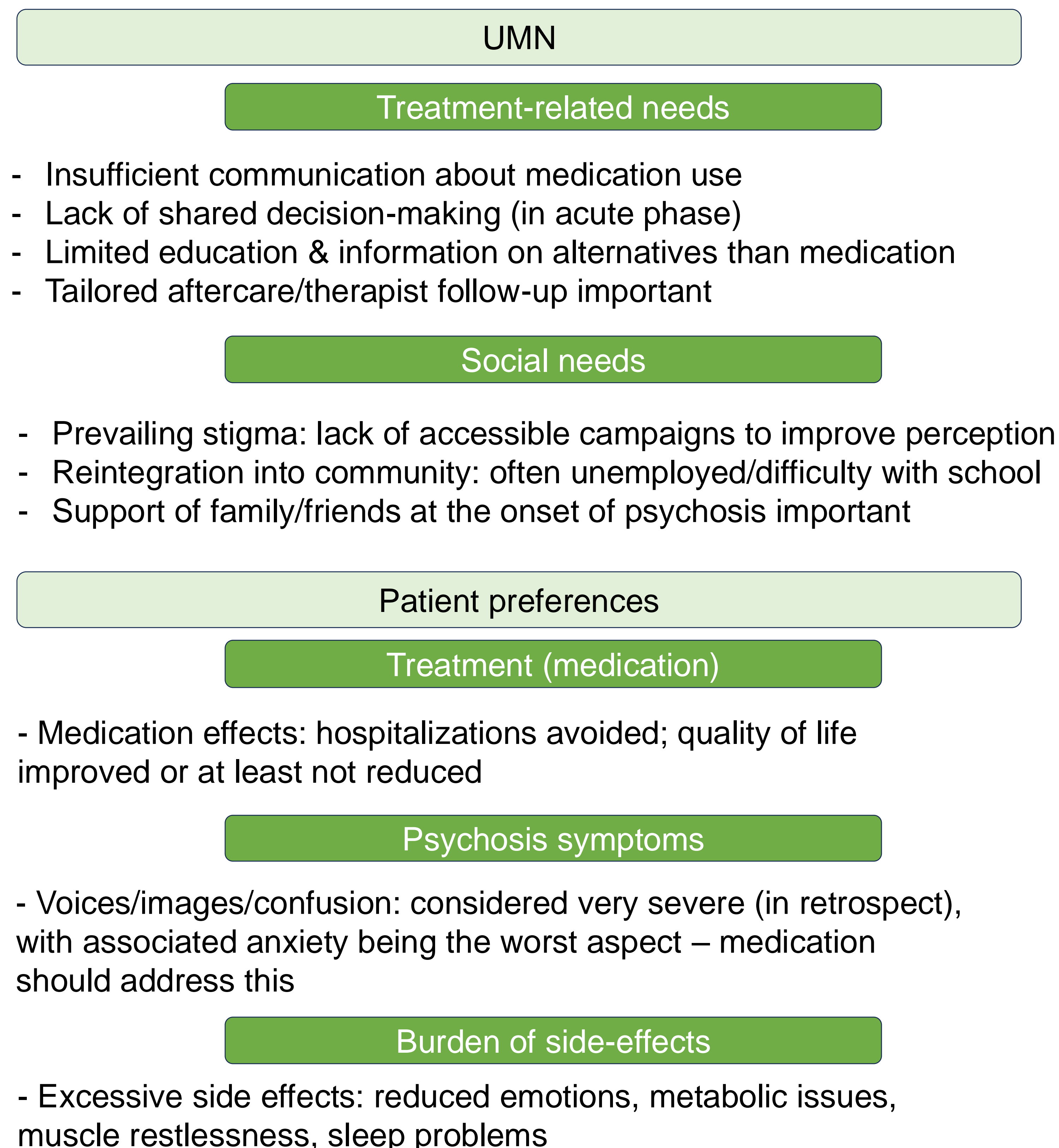


Patients are left with health(care) and societal needs

DESCRIPTIVE RESULTS



UNMET HEALTH(CARE) NEEDS IN NAPD



CONCLUSIONS

Patients with NAPD experience UMN related to their disease, treatment and social activities yet previous patient preference research primarily focuses on treatment-related characteristics.

LIST OF ABBREVIATIONS

NAPD = Non-affective psychotic disorder,
UMN = unmet medical needs

ACKNOWLEDGMENTS

This work is supported by KU Leuven's C3 internal fund