

Developing a Conceptual Framework for Socioeconomic Impact Research in European Cancer Patients: A Best-fit Framework Synthesis

Phu Duy Pham^{1,2}, Jasper Ubels^{1,2}, Karla Hernandez-Villafuerte¹, Rachel Eckford¹ and Michael Schlander^{1,2,3}

¹ Division of Health Economics, German Cancer Research Center (DKFZ), Heidelberg, Germany

² Mannheim Medical Faculty, University of Heidelberg, Heidelberg, Germany

³ Alfred Weber Institute (AWI), University of Heidelberg, Heidelberg, Germany

dkfz.

GERMAN
CANCER RESEARCH CENTER
IN THE HELMHOLTZ ASSOCIATION

Research for a Life without Cancer

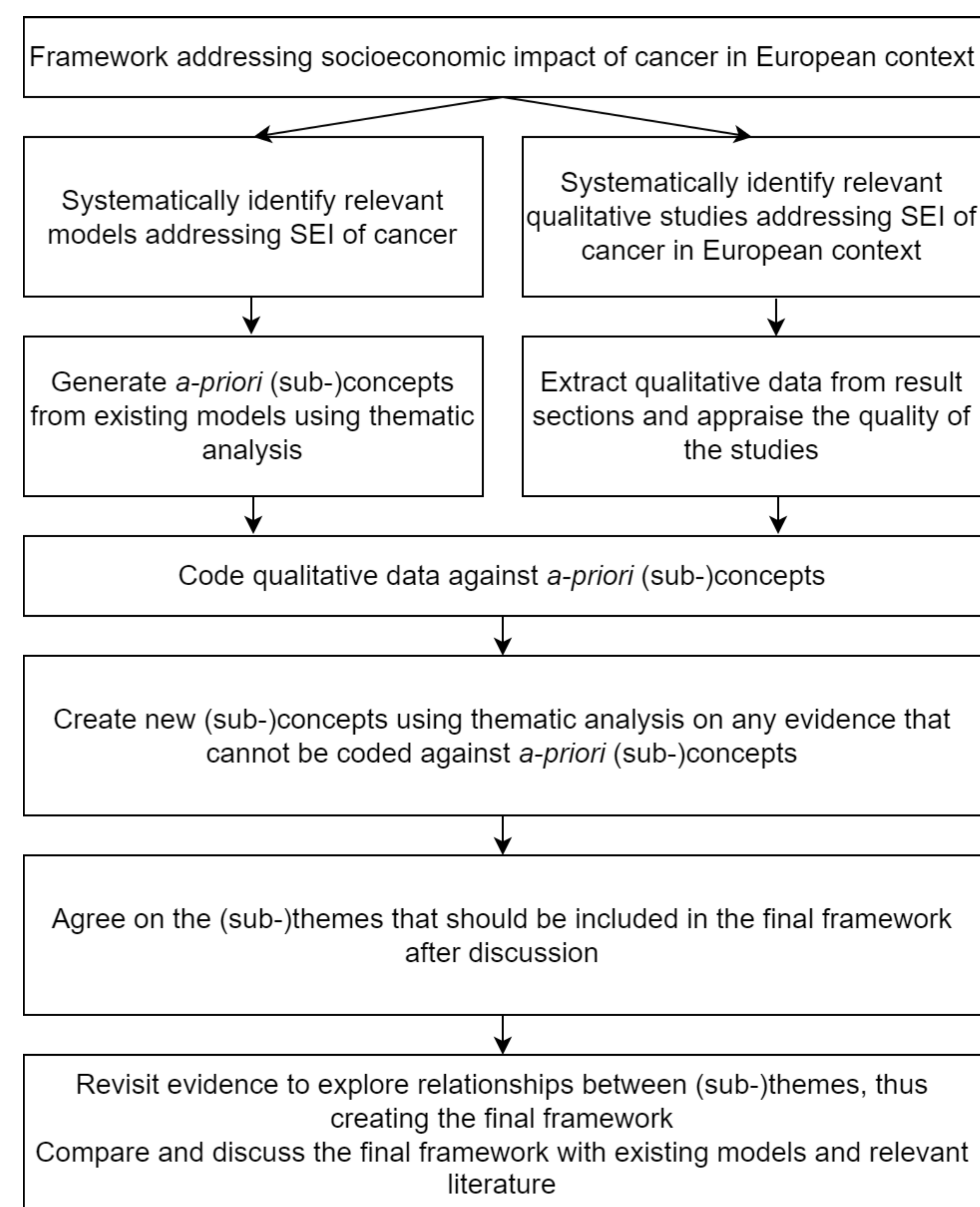
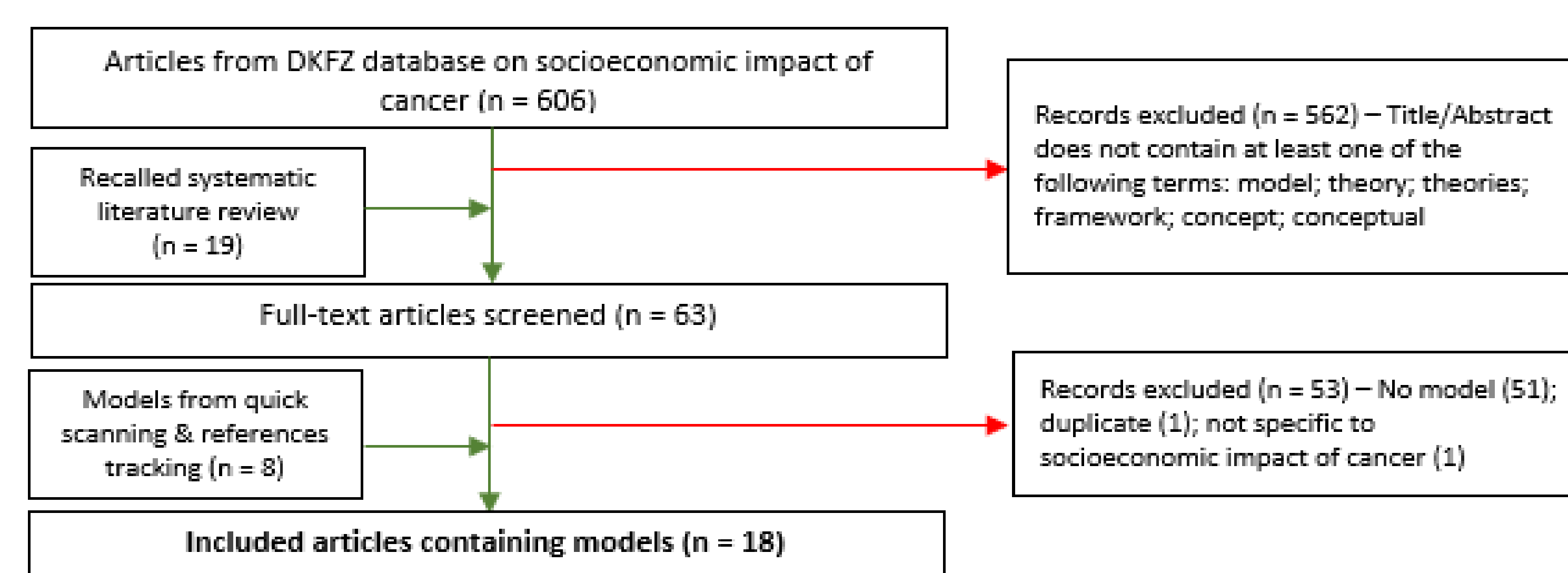
PCR208

Introduction & Objective

- Cancer and cancer care often cause financial burden for patients and their families
- Existing instruments addressing the socioeconomic impact of cancer vary in their measurement concepts
- Our **objective** was to develop a comprehensive framework from a European perspective based on a systematic review of models addressing the socioeconomic impact of cancer

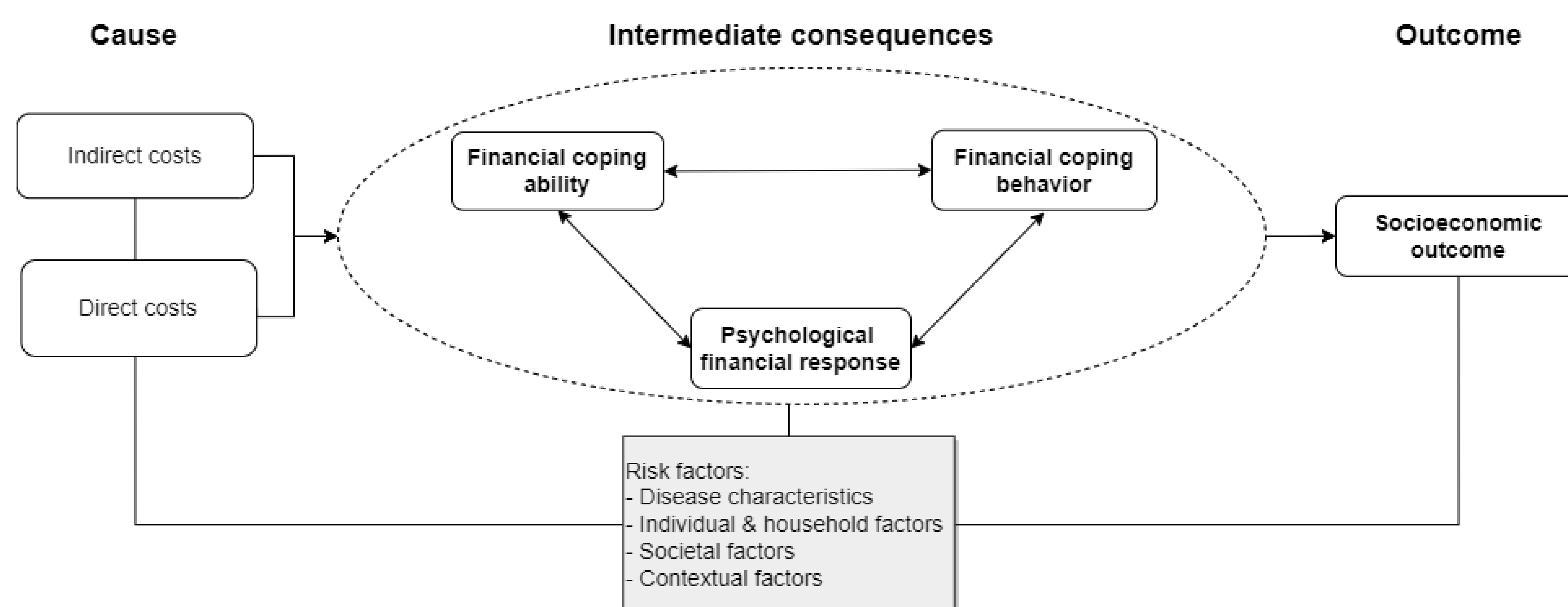
Data & Methods

- The “**best-fit framework synthesis**” method (Carroll et al. 2011, 2013) was adapted
- A database developed at the German Cancer Research Center (DKFZ) (Hernandez-Villafuerte et al., 2021) was used to identify existing models and qualitative studies in European context



Results

- 8 concepts and 20 sub-concepts were derived from eighteen included models
- 7 themes and 15 sub-themes were included in our final conceptual framework
- Based on the identified relationships, themes were categorized into four groups:
 - *The causes*: “**Direct costs**” and “**Indirect costs**”
 - *The intermediate consequences*: The dynamic loop of “**Financial coping ability**”; “**Psychological financial responses**” and “**Financial coping behavior**”
 - *The outcome*: “**Socioeconomic outcome**” – a multi-dimensional outcome
 - *The risk factors*: “**Risk factors**” – including disease characteristics; individual & household factors; societal factors; and contextual factors



Conclusions

- We propose a “**Socioeconomic impact framework**” based on a systematic review and synthesis of existing models in the field and adapted to the European perspective
- The proposal contributes to a European consensus project on socioeconomic impact research by an Organization European Cancer Institute (OEI) Taskforce, which is also presented as well at ISPOR Session 205.1