

# Conflict-of-interest statement

The author has no conflict of interest  
to declare



# ECONOMIC EVALUATION GUIDELINE DEVELOPMENT: THE LEBANESE EXPERIENCE

***Caroline Daccache***

*1 Maastricht University, Faculty of Health Medicine and Life Sciences, Department of Health Services Research, Care and Public Health Research Institute (CAPHRI), Maastricht, The Netherlands*

*2 Maastricht Health Economics and Technology Assessment Center*

*3 ISPOR Lebanon Chapter*

# Agenda



Objective



Methodological Framework



Findings



Setting the LEEG



Suggested Roadmap

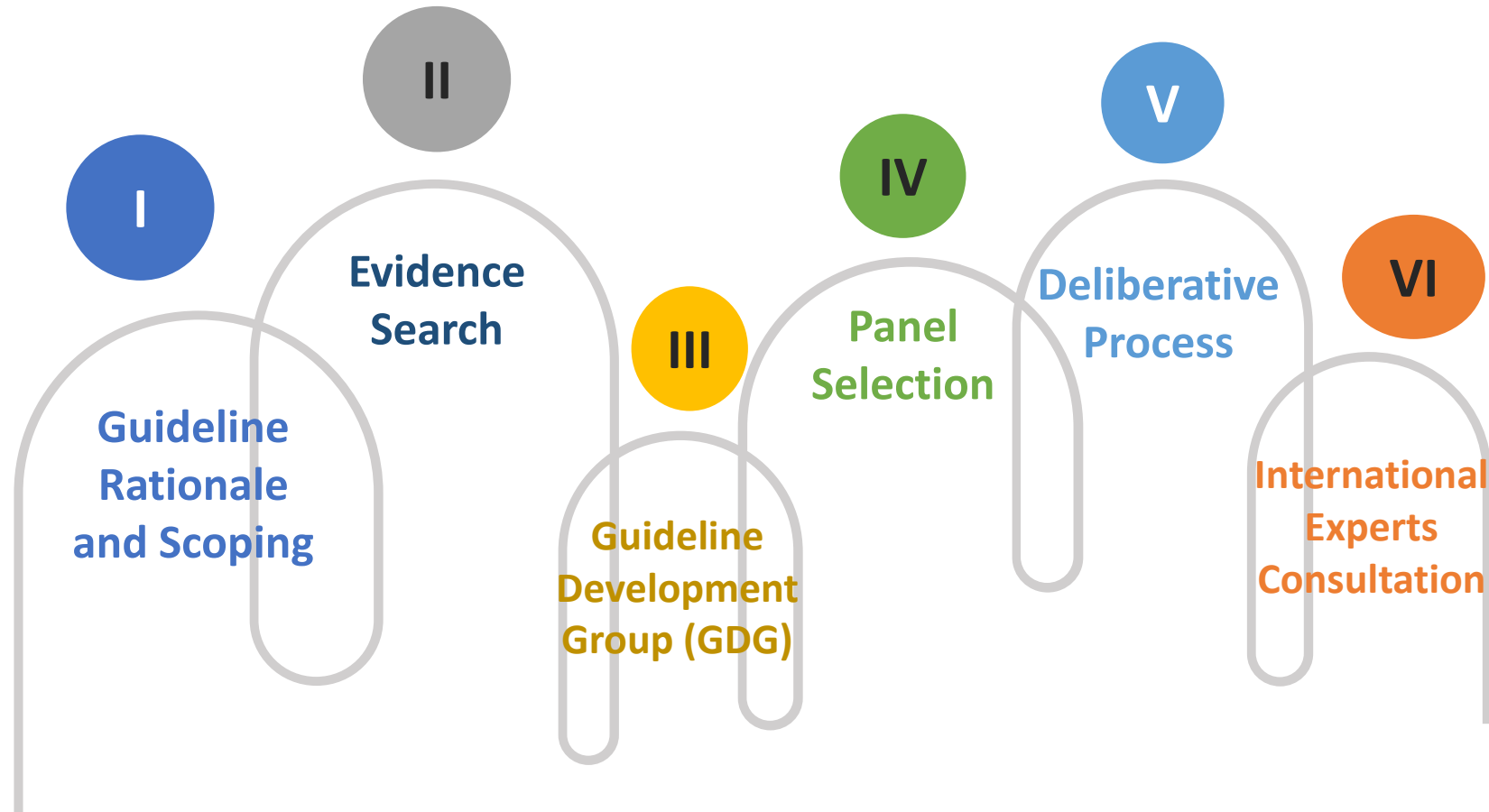
---

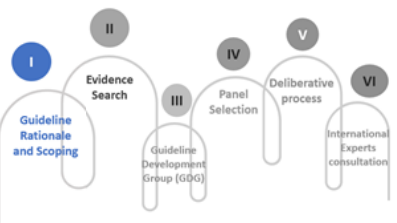
# Objective

- ✓ **Provide a tool** that can assist guidelines developers in developing national guidelines
- ✓ **Transparently report** the steps followed in developing the LEEG



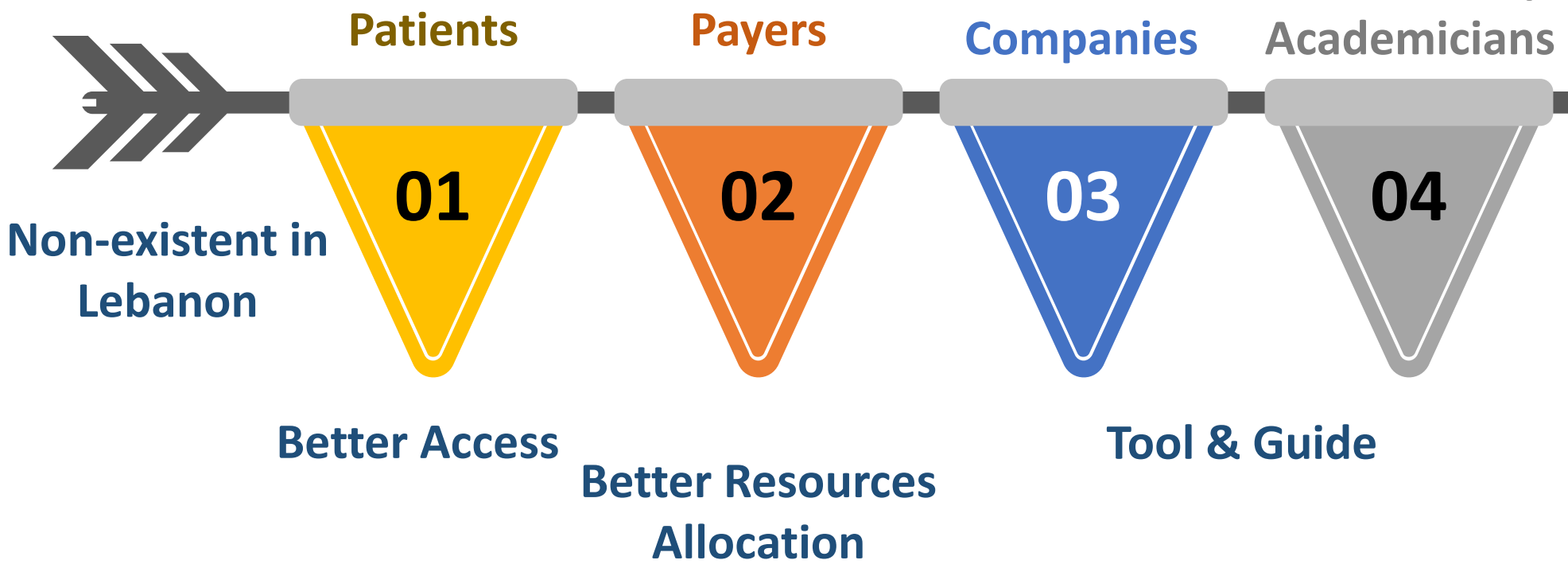
# Methodological Framework





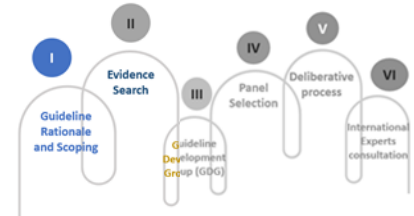
# I. Guideline Rational and Scoping

EEGs to Inform Decisions



Non-existent in Lebanon





# II. Evidence Search: Systematic Reviews

## 1 Economic Evaluation Guidelines in Low- and Middle-Income Countries

Daccache C, Rizk R, Dahham J, Evers SMAA, Hiligsmann M, Karam R (2022). Economic evaluation guidelines in low- and middle-income countries: a systematic review. *International Journal of Technology Assessment in Health Care* 38, e1, 1–14. <https://doi.org/10.1017/S0266462321000659>



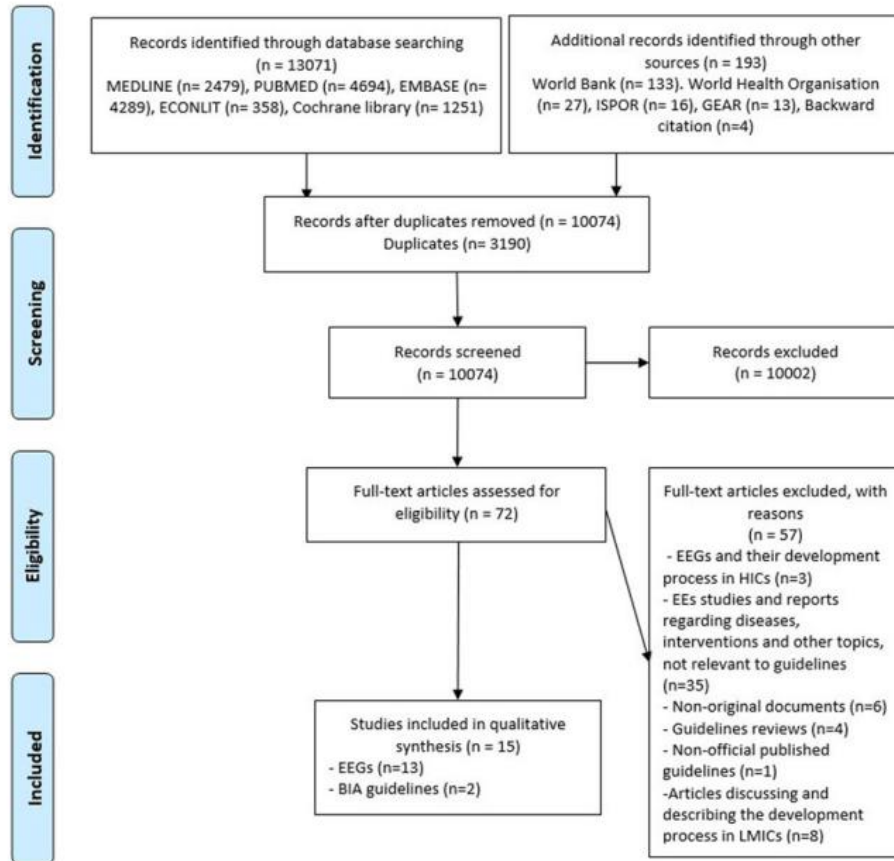
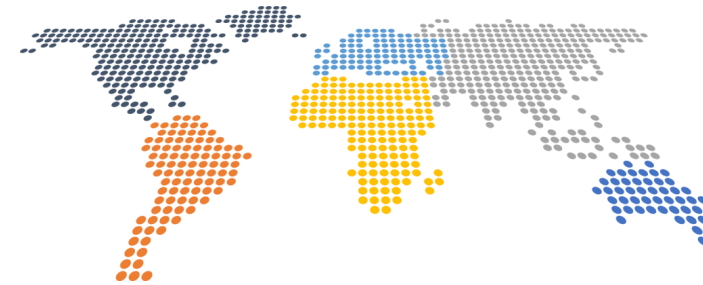
## 2 The Development Process of Economic Evaluation Guidelines in Low- and Middle-Income Countries

Daccache C, Karam R, Rizk R, Evers SMAA, Hiligsmann M (2022). The development process of economic evaluation guidelines in low- and middle-income countries: a systematic review. *International Journal of Technology Assessment in Health Care*, 38(1), e35, 1–8. <https://doi.org/10.1017/S0266462322000186>

*The researcher who does not know what he is searching for  
does not understand what he finds*

(Claude Bernard)

# II.1. Economic Evaluation Guidelines in Low- and Middle-Income Countries: A Systematic Review

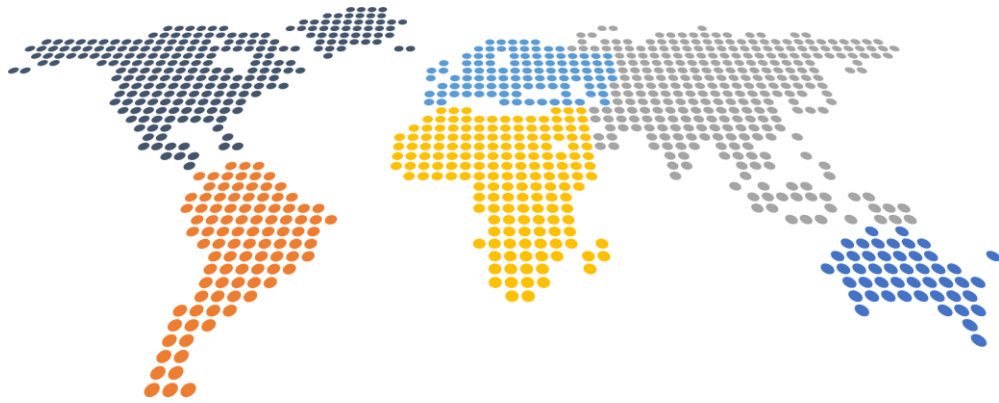


- ✓ No EEGs developed in low-income countries
- ✓ Methodological key features were not addressed in some guidelines
- ✓ Weaknesses in EEGs could adversely affect the quality of EE studies and decision-makers' judgment

**Figure 1.** PRISMA diagram of study selection. Abbreviations: BIA, budget impact analysis; EE, economic evaluation; EEG, economic evaluation guideline; ISPOR, professional society for health economics and outcomes research; GEAR, guide to health economic analysis and research; LMICs, low- and middle-income countries.



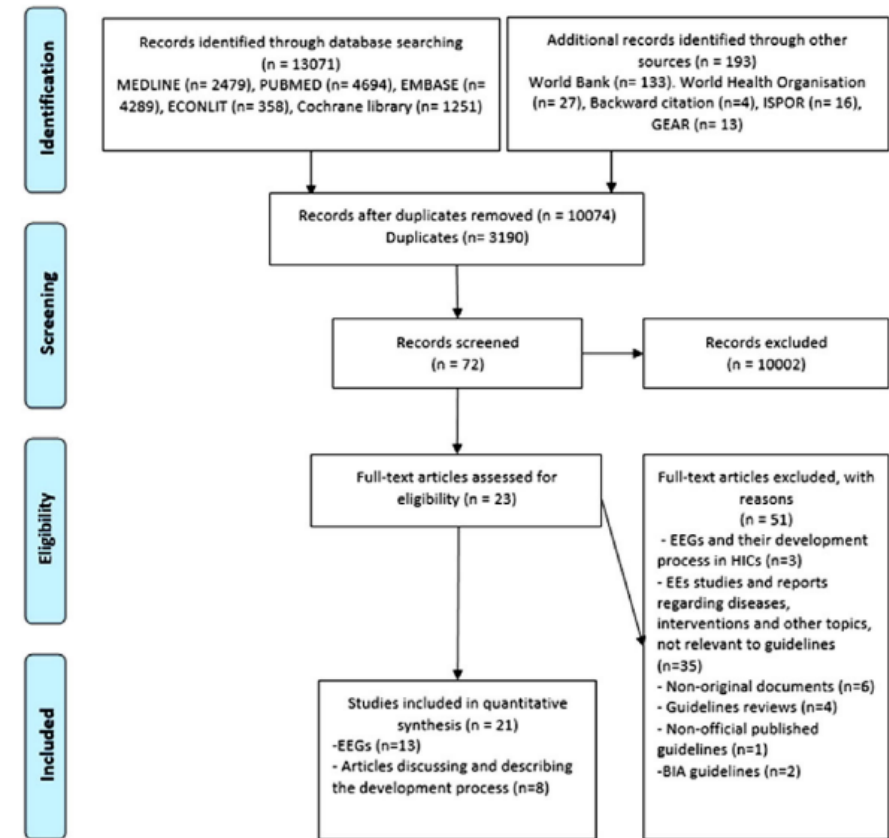
# II.2. The Development Process of Economic Evaluation Guidelines in Low- and Middle-Income Countries: A Systematic Review



**Table 2.** Summary of the Development Steps of EEGs in LMICs

Steps	Results n/N	Bhutan	Brazil	China	Colombia	Cuba	Egypt	India	Indonesia	Malaysia	Mexico	Philippine	Russian Federation	South Africa	Thailand
Reviews	6/14				x	x	x			x		x			x
Workshops	9/14	x	x	x		x	x			x	x	x			x
International experts support	5/14	x			x	x		x	x						
International Organizations support	4/14		x			x			x			x			
Number of reported steps taken		2	2	1	2	4	2	1	2	2	2	3	0	0	2

EEGs, economic evaluation guidelines; LMICs, low- and middle-income countries.



**Figure 1.** PRISMA diagram of study selection. BIA, budget impact analysis; EE, economic evaluation; EEG, economic evaluation guidelines; GEAR, guide to health economic analysis and research; HICs, high-income countries; ISPOR, Professional Society for Health Economics and Outcomes Research; LMICs, low- and middle-income countries.



# III. Guideline Development Group (GDG)



## **Coordinator, Expert in Health Systems, and Representative of Potential Users**

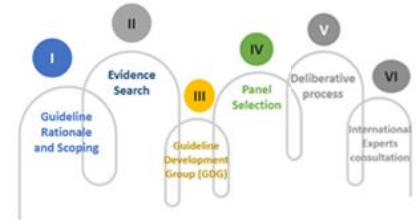
Professor in Pharmaceutical Sciences, Faculty of Sciences and Medical Sciences,  
Lebanese University  
Consultant for the Ministry of Public Health  
Quality Assurance of Pharmaceutical Products Program Director

## **Expert in Health Technology Assessment (HTA) and Health Economics**

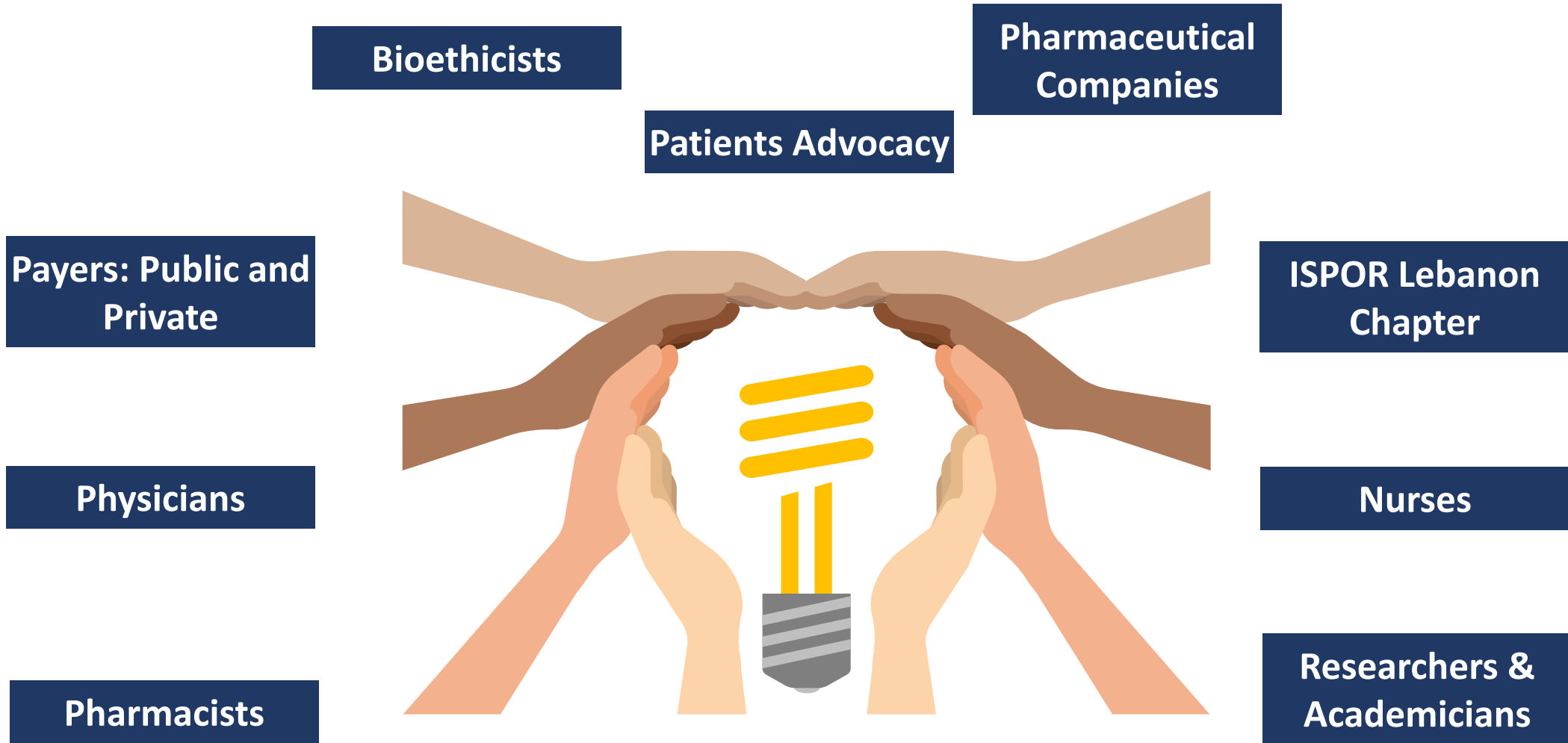
Assistant Professor at the Lebanese American University, School of Arts and  
Sciences, Department of Natural Sciences, Byblos, Lebanon  
Researcher and Coordinator, INSPECT-LB, Lebanon

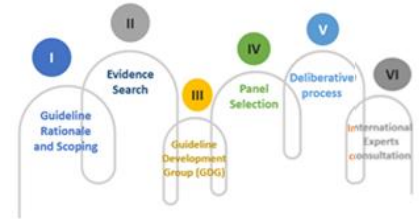
## **Expert in Research Synthesis and Knowledge Translation**

Ph.D. candidate in Health Technology Assessment, Maastricht University, The  
Netherlands  
Researcher & Developer, Mediphar Laboratories, Lebanon

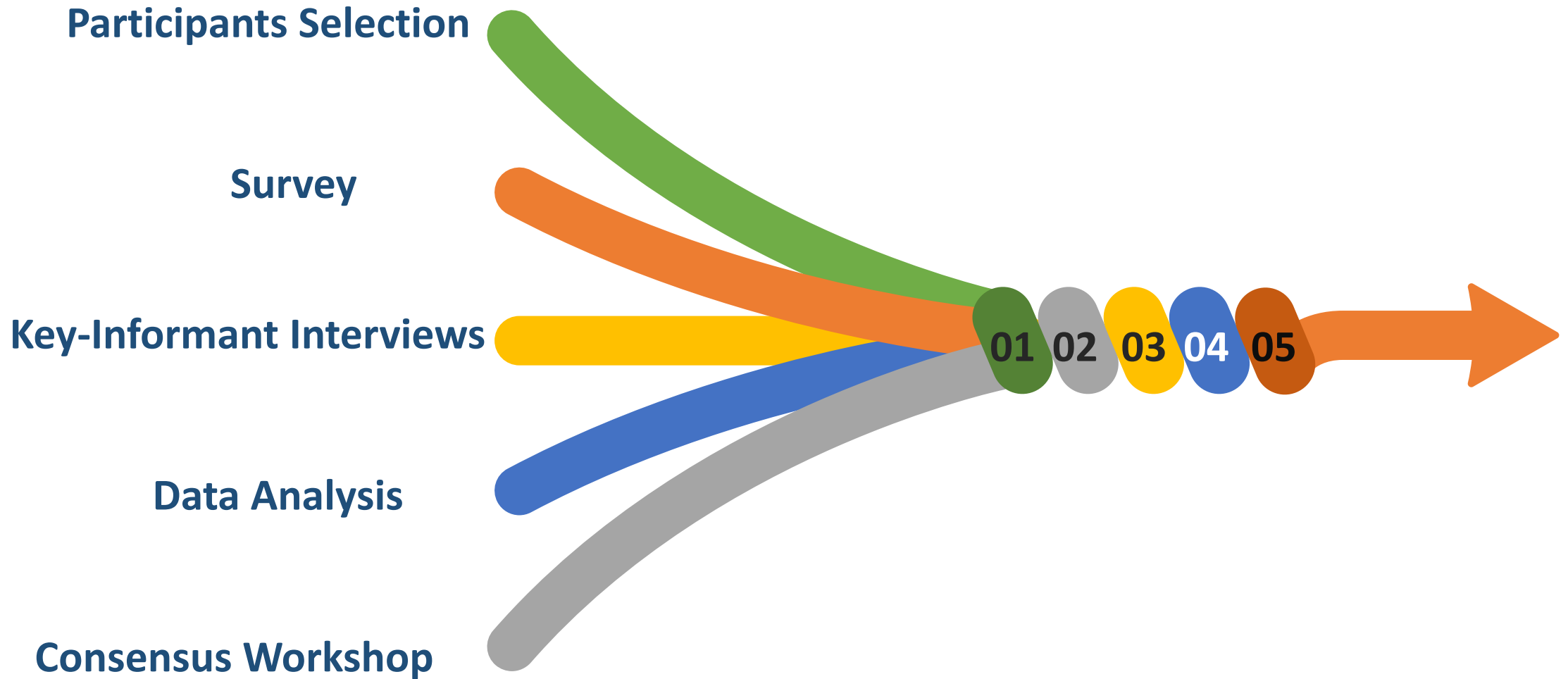


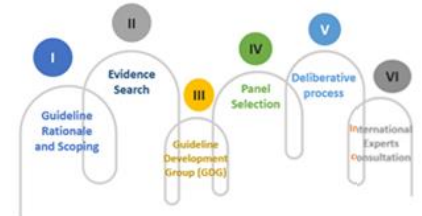
# IV. Panel Selection





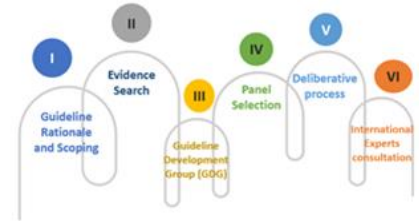
# V. Deliberative Process: Methods





# V. Deliberative Process: Timeline Table

	Jan	Feb	Mar	Apr	May	Jun	Jul	Aug	Sep	Oct	Nov	Dec
<b>Topic Introduction</b>		→										
<b>Consent &amp; Survey</b>			→	→	→							
<b>In-person Interview</b>				→	→	→						
<b>Transcription &amp; Translation</b>						→	→	→				
<b>Data Analysis</b>								→	→	→		
<b>Consensus Workshop</b>										26		
<b>Expert Consultation</b>											→	
<b>GDG Meetings</b>	→	→	→	→	→	→	→	→	→	→	→	→
<b>Setting the Guidelines</b>												



# VI. International Experts Consultation



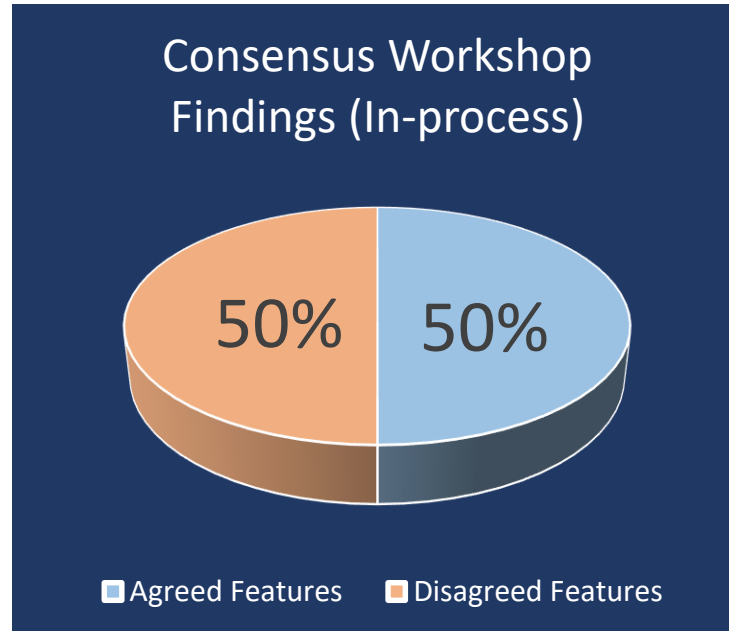
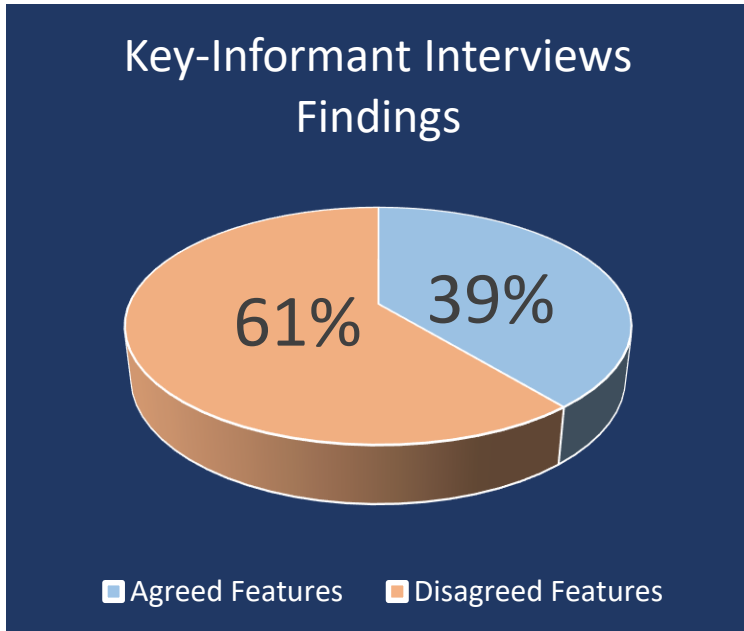
## Prof. Silvia M.A.A. Evers

Professor of Health Technology Assessment, Maastricht University, The Netherlands

## Dr. Mickaël Hiligsmann

Associate Professor of Health Technology Assessment and Health Economics, Maastricht University, The Netherlands

# Findings & Setting LEEG



International Experts Consultation

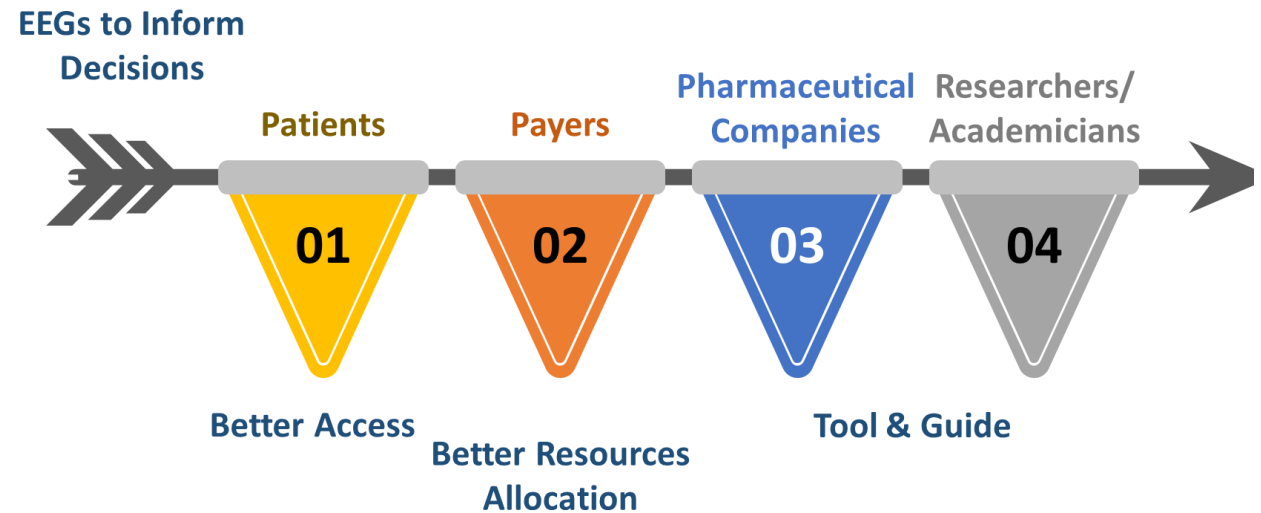
## Lebanese Economic Evaluation Guideline (LEEG)

# Roadmap

Identify the Scope

Search for Evidence

Translate Evidence into Recommendations






# THANK YOU

M

*Everything is theoretically impossible, until it is done*  
*(Robert A. Heinlein)*

# Caroline Daccache

 Beirut, Lebanon

 961 3 491059  
961 1 871102

 [linkedin.com/in/caroline-daccache-kahwaji](https://www.linkedin.com/in/caroline-daccache-kahwaji)

 [c.daccachekahwaji@maastrichtuniversity.nl](mailto:c.daccachekahwaji@maastrichtuniversity.nl)  
[caroline.d.kahwaji@gmail.com](mailto:caroline.d.kahwaji@gmail.com)



**Maastricht University**



**Maastricht UMC+**