

IN SEARCH OF A PAN-EUROPEAN VALUE SET; APPLICATION FOR EQ-5D-3L

Ayesha Sajjad^{1*}, Matthijs M. Versteegh², Jan Busschbach³, Judit Simon^{4*}, Leona Hakkaart-van Roijen^{1,2*}

¹Erasmus School of Health Policy and Management, Erasmus University Rotterdam, Rotterdam, The Netherlands;

²Institute for Medical Technology Assessment (iMTA), Erasmus University Rotterdam, Rotterdam, The Netherlands;

³Section of Medical Psychology and Psychotherapy, Erasmus MC, Rotterdam, The Netherlands;

⁴Department of Health Economics, Center for Public Health, Medical University of Vienna, Vienna, Austria

*On behalf of the PECUNIA (ProgramME in Costing, resource use measurement and outcome valuation for Use in multi-sectoral National and International health economic evaluAtions) project.

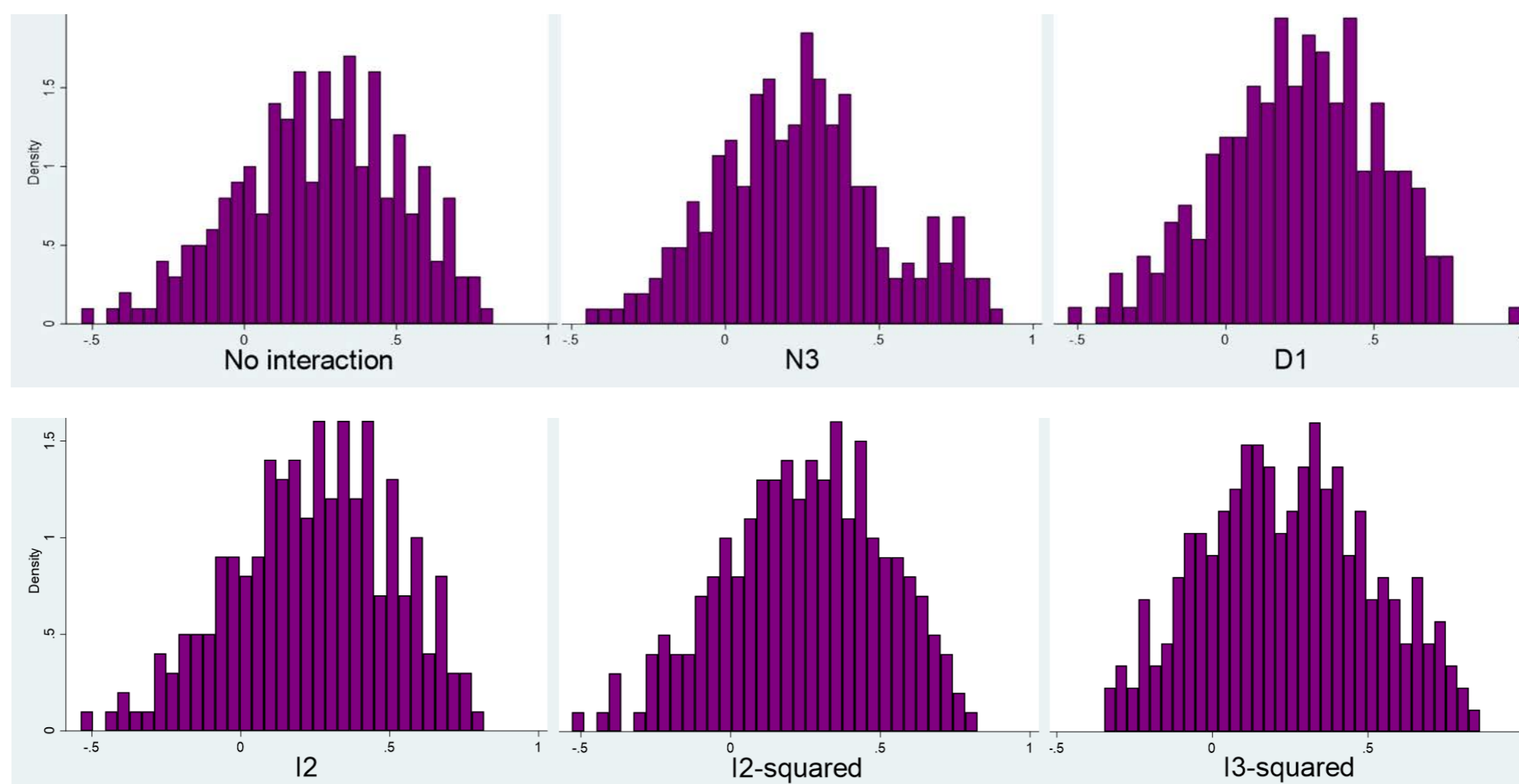
BACKGROUND

EQ-5D valuation studies elicit preferences of the general population in a specific country for health-related quality of life. Within Europe, national value sets are a helpful tool for international economic evaluations as more countries are initiating partnerships to enhance the access of patients to high quality and cost-effective treatments. In the absence of a national value set, investigators tend to use a value set from neighbouring country as a proxy of the national value

set. The validity of the use of such proxies can be increased if existing value sets from different countries were combined to develop a 'pan-European' value set.

OBJECTIVE

We aim to derive a methodology for estimating a 'pan-European' value set for the EQ-5D as a pragmatic solution for economic evaluations across Europe using EQ-5D-3L as an illustrative example.



METHODS

- Using published coefficients from EQ-5D-3L time trade-off (TTO) value sets in UK, Spain, Netherlands, Germany, Denmark, France, Italy, Portugal, and Poland., a pooled data set was constructed.
- Seven different model specifications were generated using Ordinary Least Squares (OLS) regression.
- Interaction terms were included in the analysis: N3, D1, I2, I2², I3².
- Analyses were further weighted using population size

weights for the included countries using Generalized Estimating Equations (GEE).

- Model selection was based on goodness-of-fit criteria measured by Root Mean Square Error (RMSE), pseudo R² and Mean Absolute Error (MAE).

RESULTS

The predicted utilities from the N3 model ranged from -0.454 – 0.902. The N3 model was the best-fitting model according to goodness-of-fit criteria.

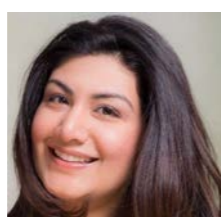
CONCLUSION

In this analysis, the values from the N3 model best represented the preferences of the European population. The estimated 'pan-European' value set can be used for economic evaluations pertaining to interventions impacting health-related quality of life in European countries that do not have a national value set.

Questions?

Dr. Ayesha Sajjad

✉ sajjad@eshpm.eur.nl



European
Commission

Horizon 2020
European Union funding
for Research & Innovation

This project has received funding from the European Union's Horizon 2020 research and innovation programme under grant agreement No 779292.