



Real-World Outcomes of Second-Line Therapies in Relapsed/Refractory DLBCL Patients in Germany: Impact of Front-Line Treatment-Free Period (2020-2022)

Guillaume Azarias¹, Kai Strobel², Mugdha Gokhale³, Simon Purcell⁴, Stefan Schilling², Markus Rückert², Zuzana Dostalova⁵

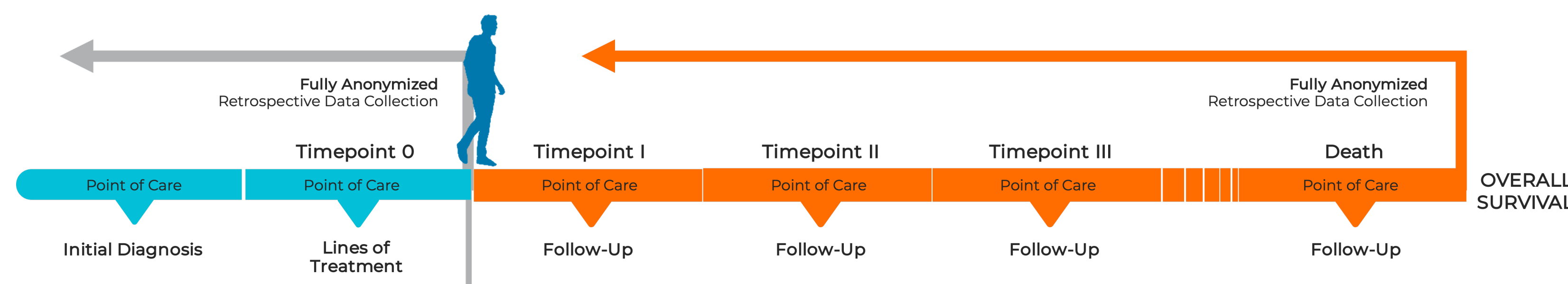
¹ CancerDataNet GmbH, Basel, Switzerland, ² TriNetX Oncology, Freiburg, Germany, ³ Pfizer, Collegeville, PA, USA, ⁴ Pfizer, London, UK, ⁵ TriNetX LLC, Cambridge, MA, USA

INTRODUCTION

Diffuse large B-cell lymphoma (DLBCL) is the most common non-Hodgkin lymphoma. Although R-CHOP remains the first-line standard, management of relapsed/refractory (r/r) disease has rapidly evolved in recent years. Yet, real-world data on 2L+ treatment in Germany remains limited.

METHODS

This retrospective analysis used real-world data from ~5% of NHL treatment centers in Germany covering 289 2L+ patients in 2022. Data were collected via certified eCRFs and underwent automated and manual quality controls. Patient and disease characteristics and outcomes were collected at diagnosis and each line of therapeutic. Data from prior 2L-4L therapies were used to profile patients.



PATIENT CHARACTERISTICS

	2L+ (289 patients*)	3L+ (105 patients**)	4 th L (28 patients)
Age			
Median	72	73	75
Mean	70	71	74
Prognostic factors			
IPI high risk	21%	36%	61%
Age > 60 years	88%	90%	93%
ECOG ≥ 2	27%	46%	64%
Ann-Arbor Stage III-IV	77%	84%	79%
Extranodal in >1 organs	13%	22%	50%
Elevated LDH	60%	69%	79%
Comorbidities			
Any	53%	55%	68%
Hypertension	44%	47%	61%
Diabetes	20%	19%	46%
Coronary heart disease	18%	17%	7%
Kidney disease	11%	10%	20%
Symptoms			
Any	70%	71%	50%
Performance loss	51%	58%	25%
Fatigue	46%	50%	18%
Night sweat	33%	28%	25%
Lymphadenopathy	33%	30%	29%
Bulky disease			
% of diagnosed patients	17%	20%	46%
% tumor mass ≥ 7.5cm	57%	43%	62%
Centroblastic cell type	71%	71%	NA
Immunohistochemistry			
No hit [†]	5%	4%	NA
Single hit [†]	25%	17%	NA
Double hit [†]	6%	0%	NA
Triple+ hit [†]	65%	79%	NA

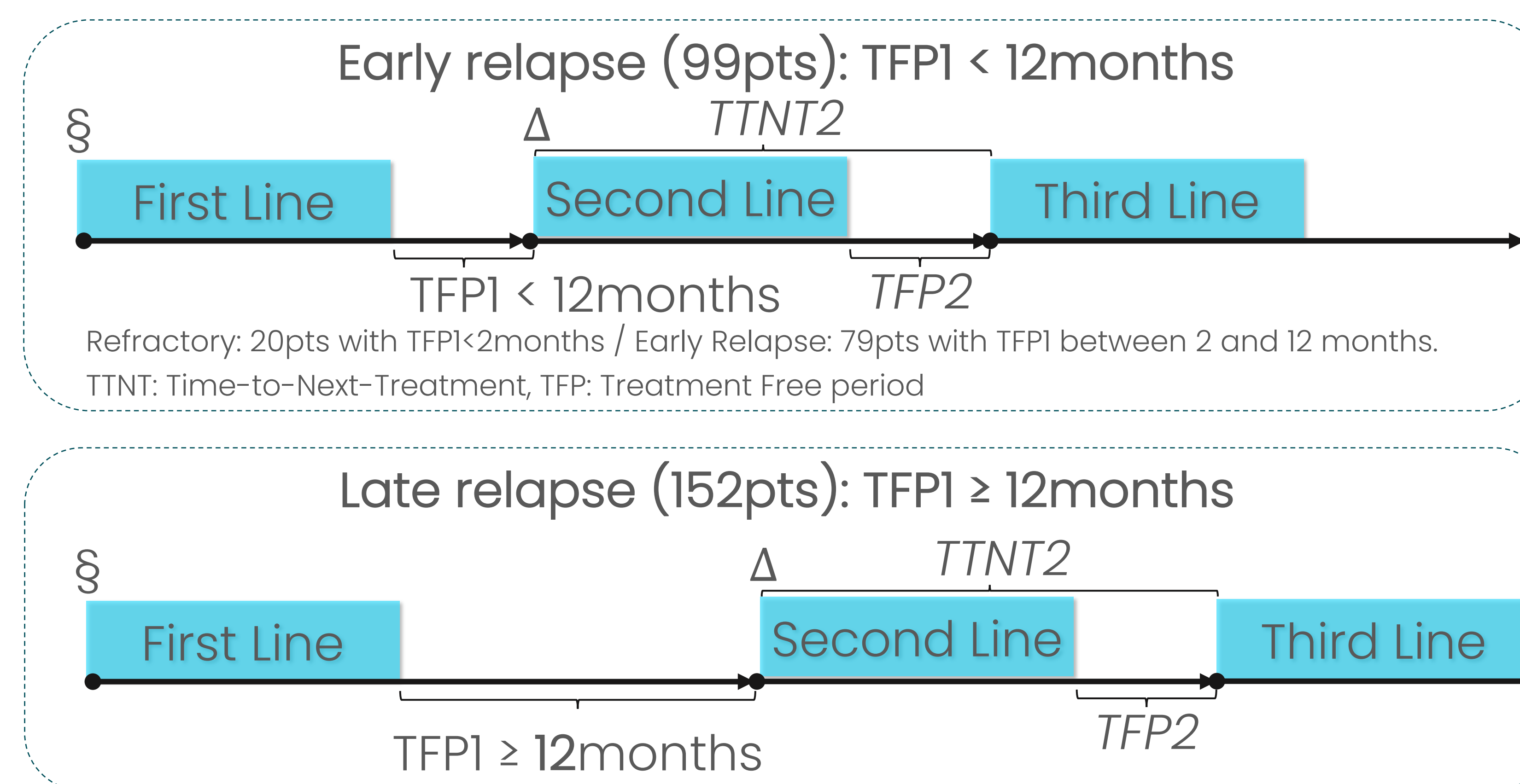
* Includes the data of patients in 3rd and 4th line of therapy at the time of data collection

** Includes the data of patients in 4th line of therapy at the time of data collection

[†] Immunohistochemistry results among Ki67, CD10, CD19, CD20, CD22, CD79a, PAX5

OBJECTIVES

Compare the patient characteristics, time to next treatment in second-line therapy and overall survival, according to the Treatment Free Period after front line.



RESULTS

Table 1: Patient Characteristics at the Beginning of Line 1 (§)

Characteristics	Overall (N = 251)	Early relapse/refractory (N = 99)	Late relapse (N = 152)	p-value
Statutory Health Insurance	92%	94%	90%	0.4
Age ≥ 75	78%	69%	84%	0.006
ECOG < 2	80%	82%	78%	0.6
Fit	65%	56%	62%	0.8
Good Social Integration	74%	75%	74%	>0.9
Good Cognition	70%	72%	69%	0.8
Good Compliance	92%	92%	93%	>0.9
Ann Arbor Stage IV	16%	30%	11%	0.006
IPI Score 4-5	13%	17%	9.9%	0.13
Symptoms Present	51%	65%	40%	0.004
BCL2 Translocated	27%	28%	26%	0.8
BCL6 Translocated	11%	18%	7.1%	0.088
MYC Translocated	8.8%	6.1%	11%	0.3
ABC COO	19%	23%	16%	0.2
GCB COO	64%	61%	65%	0.13
University-Based Center	8.4%	11%	5.6%	0.13
Praxis-Based Center	12%	19%	7.9%	0.014
Non-University Clinics/Hosp	78%	69%	85%	0.004

Table 2: Patient Characteristics at the Beginning of Line 2 (Δ)

Characteristics	Overall (N = 251)	Early relapse/refractory (N = 99)	Late relapse (N = 152)	p-value
Statutory Health Insurance	92%	94%	90%	0.4
Age ≤ 75	69%	65%	71%	0.4
ECOG < 2	71%	75%	68%	0.3
Fit	49%	46%	50%	0.7
Good Social Integration	74%	75%	74%	>0.9
Good Cognition	70%	72%	69%	0.8
Good Compliance	92%	92%	93%	>0.9
Ann Arbor Stage IV	26%	31%	22%	0.2
IPI Score 4-5	23%	20%	24%	0.5
Symptoms Present	49%	58%	44%	0.050

Figure 1: Time-To-Next-Treatment of Early vs Late Relapse Patients According to Second Line Therapy

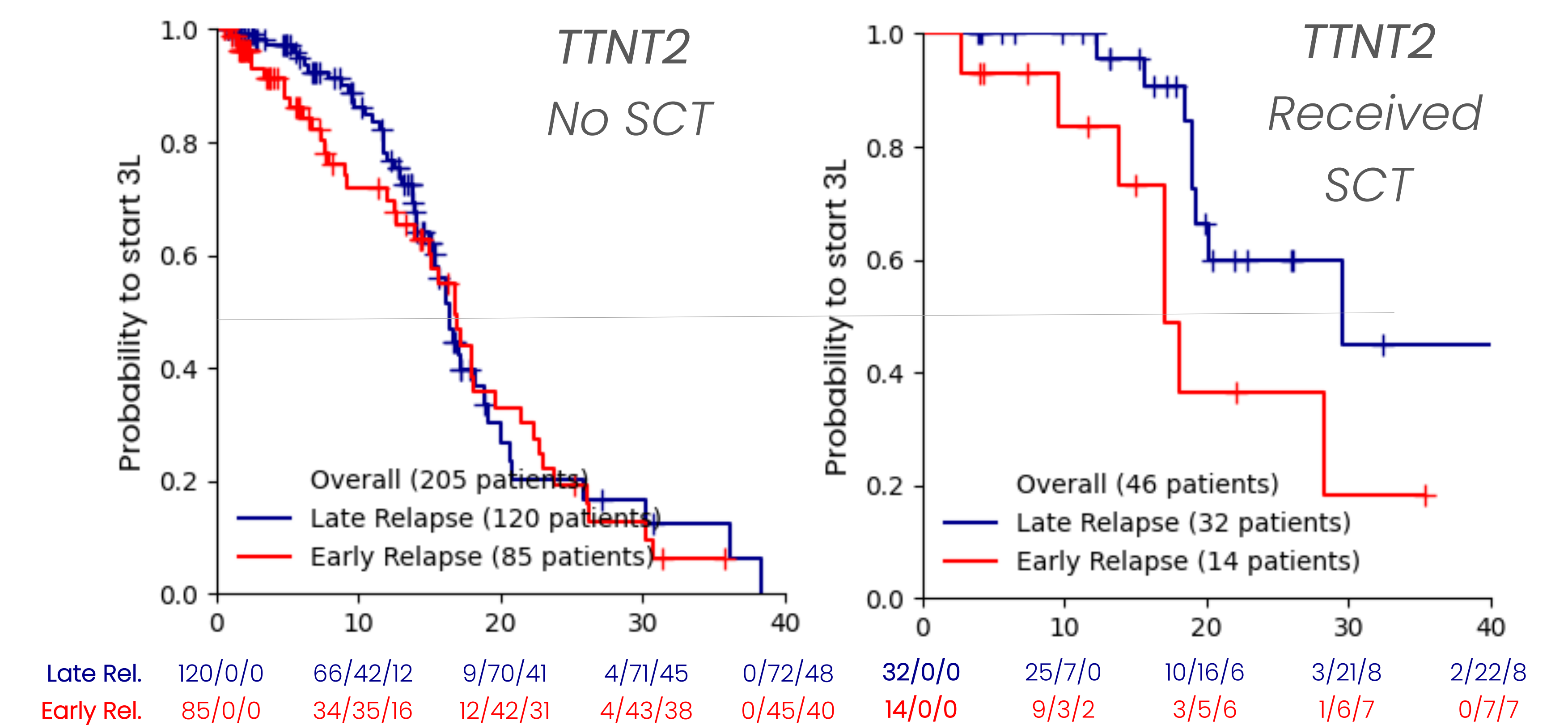
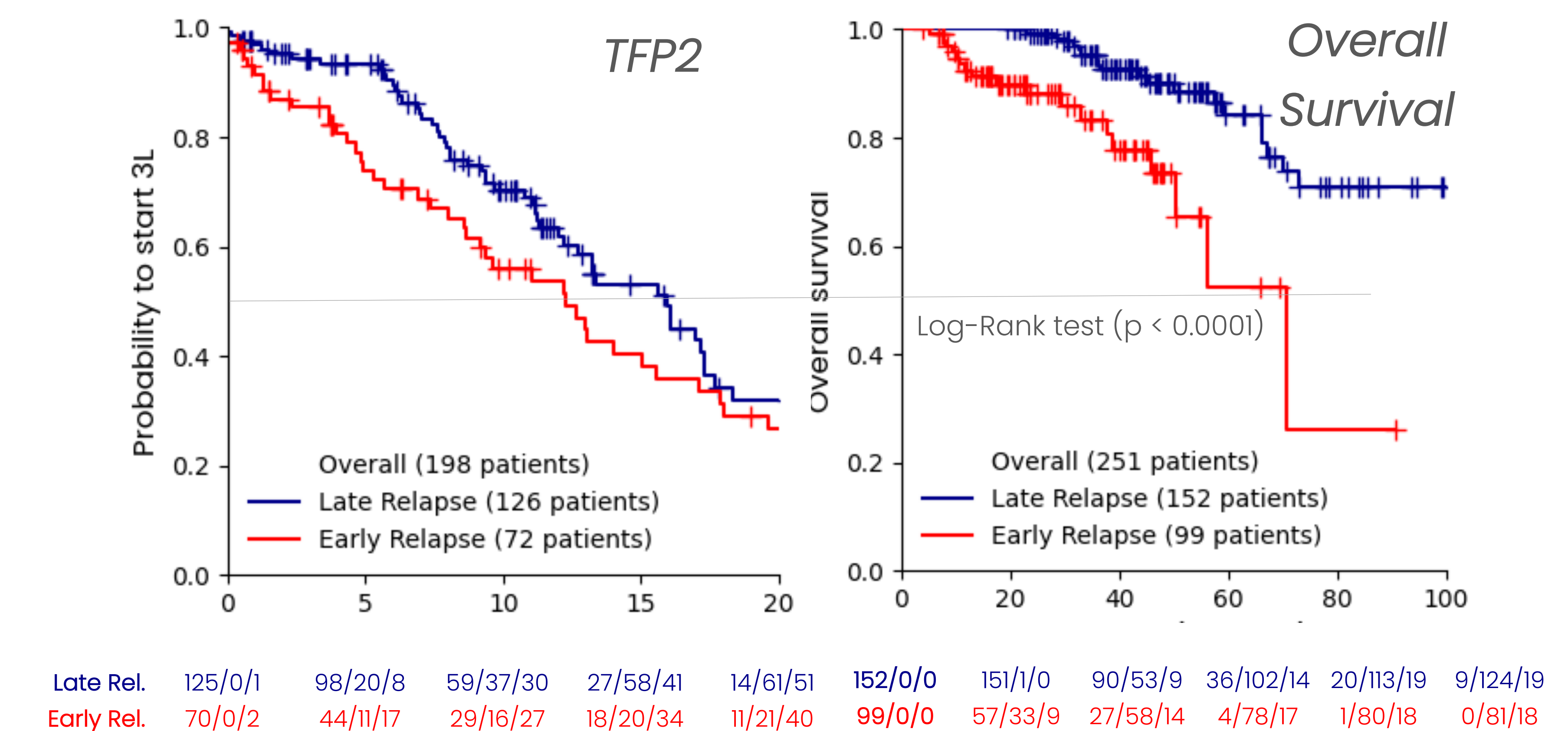


Figure 2: Treatment-Free-Period and Overall Survival of Early vs Late Relapse Patients



Legend of figures 1 and 2: x-axis: Duration in months. Below each Kaplan Meier Graph are reported the numbers of patient at risk / censored / events (starting 3L or death) at each time point.

RESULTS

- Early relapse after Front Line was associated with poorer baseline condition.
- Late relapse patients had better prognosis after 2L SCT.
- Patients with early relapse after 1L have worse overall survival than late relapse patients.

CONCLUSIONS

These results support including early-relapse patients after 1L in clinical trials for novel therapies.

[Download Poster PDF](#)

