

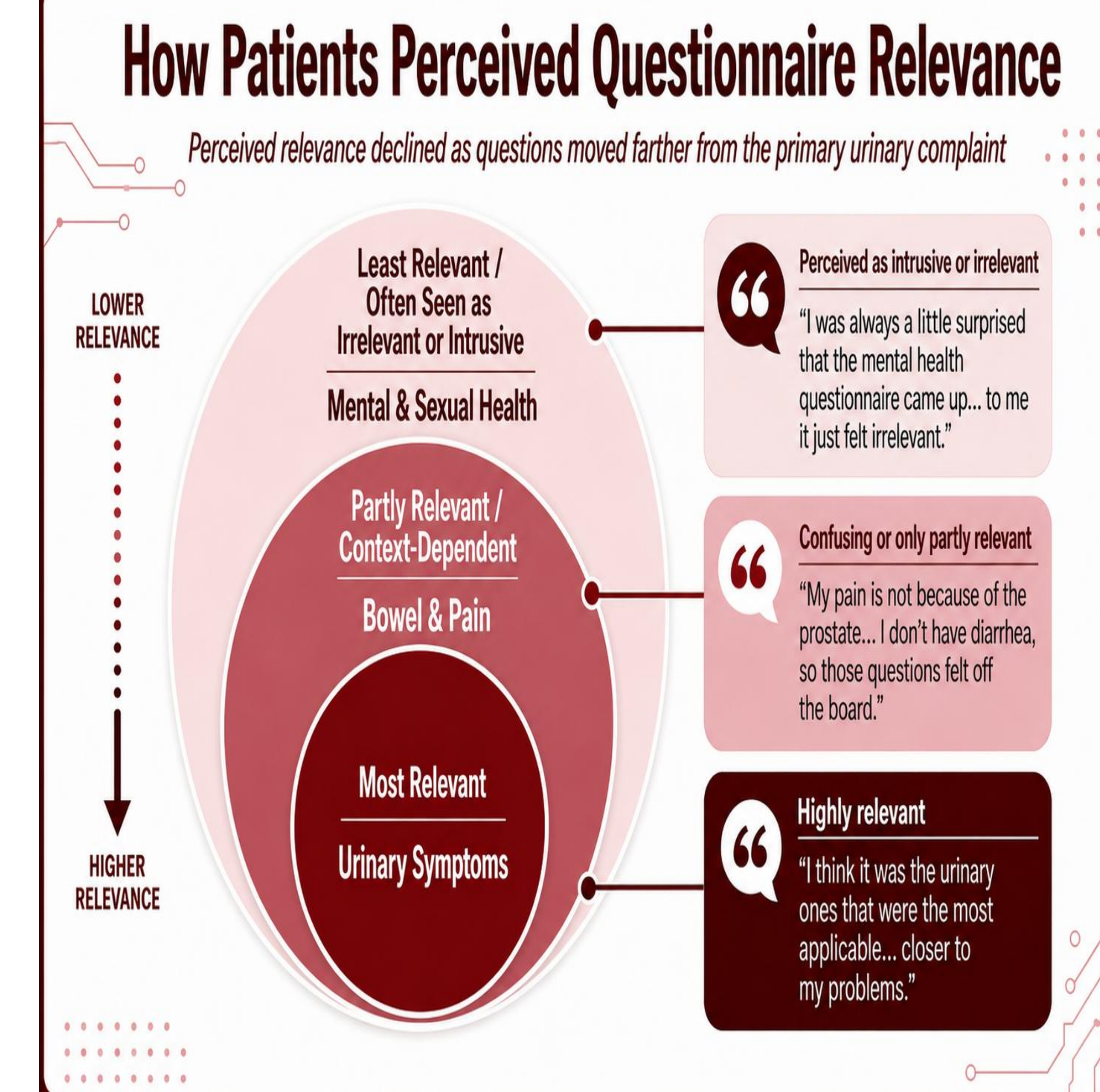
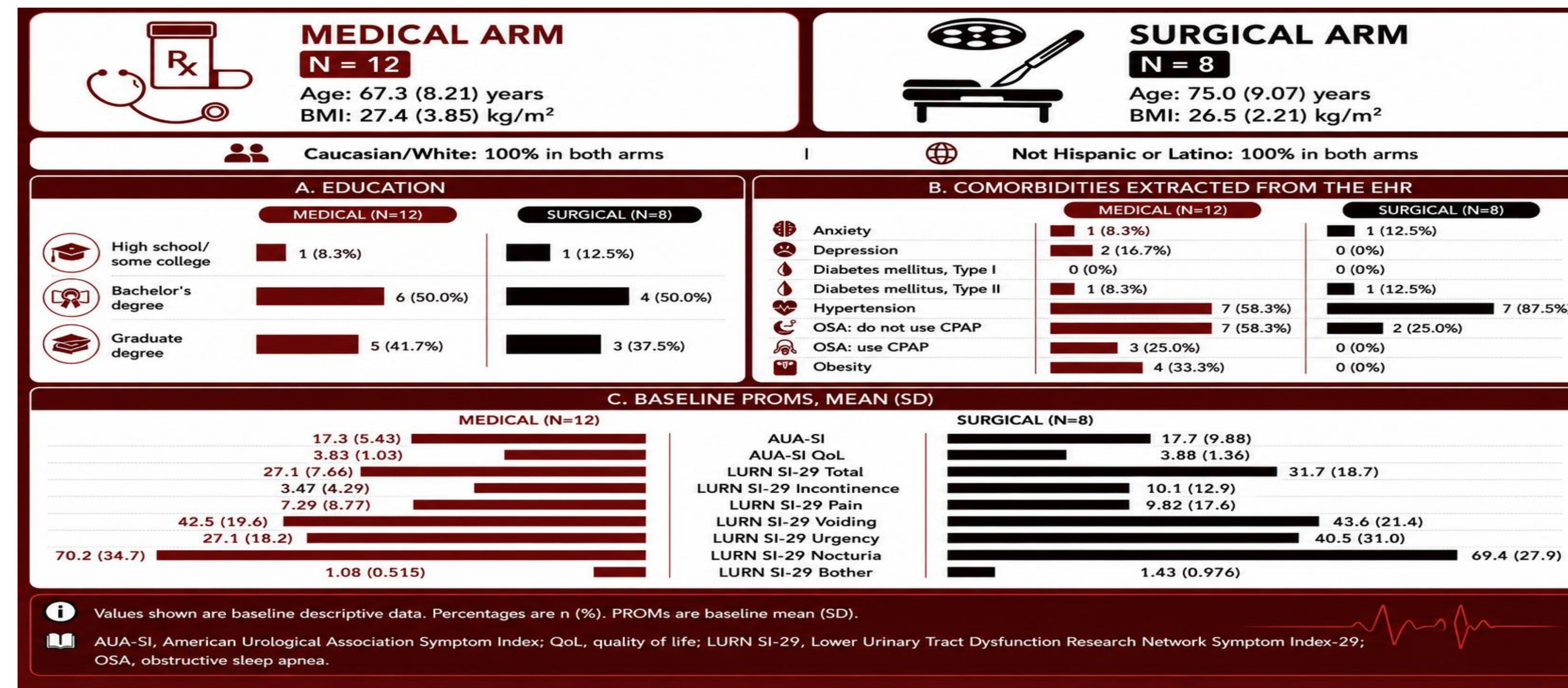
Background

- The Symptoms of Lower Urinary Tract Dysfunction Research Network Symptom Index-29 (LURN SI-29) provides a broader assessment of LUTS domains than the American Urological Association Symptom Index (AUA-SI), including incontinence and pain.
- Prior LURN studies suggest that non-urinary symptoms, such as sleep disturbance, anxiety, and depression, may influence lower urinary tract symptom (LUTS) severity.
- This study explored patient experiences with a LURN-informed patient-reported outcome measures (PROMs) battery to identify strategies for meaningful PROM integration into routine care.

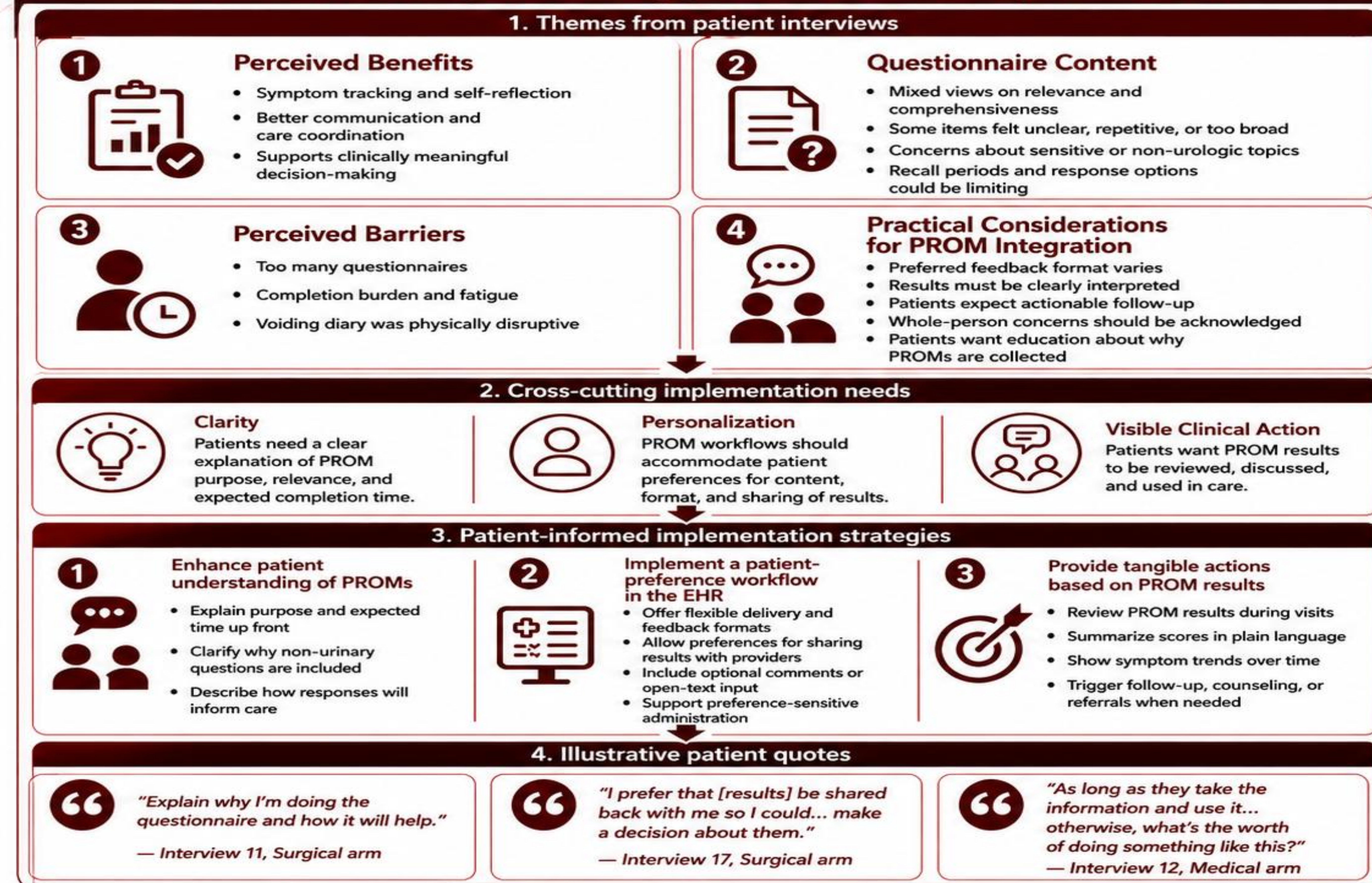
Methods

- Design:** Qualitative interpretive description study embedded within a parent LUTS/BPH observational study.
- Participants:** 20 English-speaking patients aged ≥50 years with LUTS/BPH; medical management (n=12) and surgical treatment (n=8).
- PROM battery:** AUA-SI, LURN SI-29, and broader whole-person domains, including sleep, physical function, anxiety, depression, pain, bowel symptoms, sexual health, and voiding diary measures.
- Data collection:** Virtual semi-structured interviews about PROM experiences, burden, relevance, feedback preferences, and clinical integration.
- Analysis:** Themes were synthesized into patient-informed implementation strategies.

Results



Qualitative findings informing patient-centered implementation



PROM = patient-reported outcome measure; EHR = electronic health record.

Future Directions

