

Real-World insights from the LOGEX IMID Observatory: a multi-country, multi-year analysis of treatment pathways and healthcare resource utilisation in immune-mediated inflammatory diseases

#RWD145

J. Jasper Deuring, PhD¹, Menno Gaastra, MD PhD², Eric Grossat, MsC³, Rodolfo Romero, MD PhD⁴, Jan van der Eijk, MsC⁵.

¹LOGEX B.V., Amsterdam, Netherlands, ²Noordwest Ziekenhuigroep, Centrum Oosterwal, Alkmaar, Netherlands, ³Logex Healthcare Analytics, Alboraya, Spain, ⁴Gregorio Marañón University General Hospital, Madrid, Spain, ⁵LOGEX BV, Amsterdam, Netherlands.

Introduction & Knowledge gap

The treatment of immune-mediated inflammatory diseases (IMIDs) is increasingly shifting from broad immunosuppression to targeted therapeutic agents. However, there is an **unmet need to capture and manage coexisting IMIDs, and to address the long-term safety and (cost-)effectiveness of available treatments**. To address this, we present the structure, data capabilities, and clinical relevance of the LOGEX IMID Observatory—a pan-European initiative harnessing real-world data (RWD) to analyze treatment patterns, healthcare resource utilization (HCRU), and patient outcomes in IMIDs across **dermatology, rheumatology, and gastroenterology**.

Conclusions

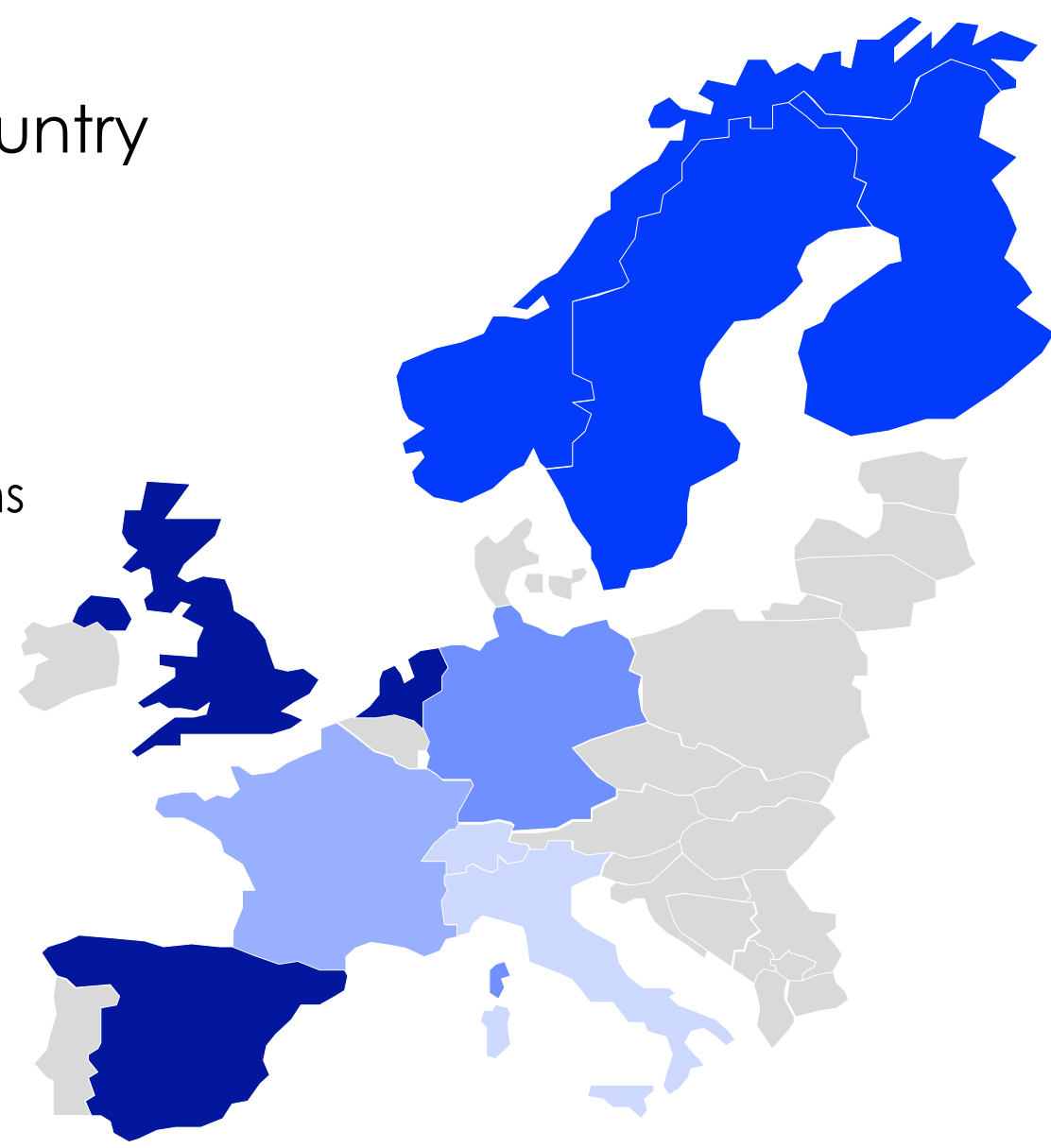
The LOGEX IMID Observatory provides a **scalable and scientifically robust platform** to advance the understanding and management of IMIDs across Europe. By integrating multi-country real-world data with advanced analytics and clinician collaboration, it **enables evidence-based decision-making, promotes cross-border learning, and drives improvements in care quality and efficiency**.

Methods

Partner hospitals: European coverage

5-10 hospitals per country

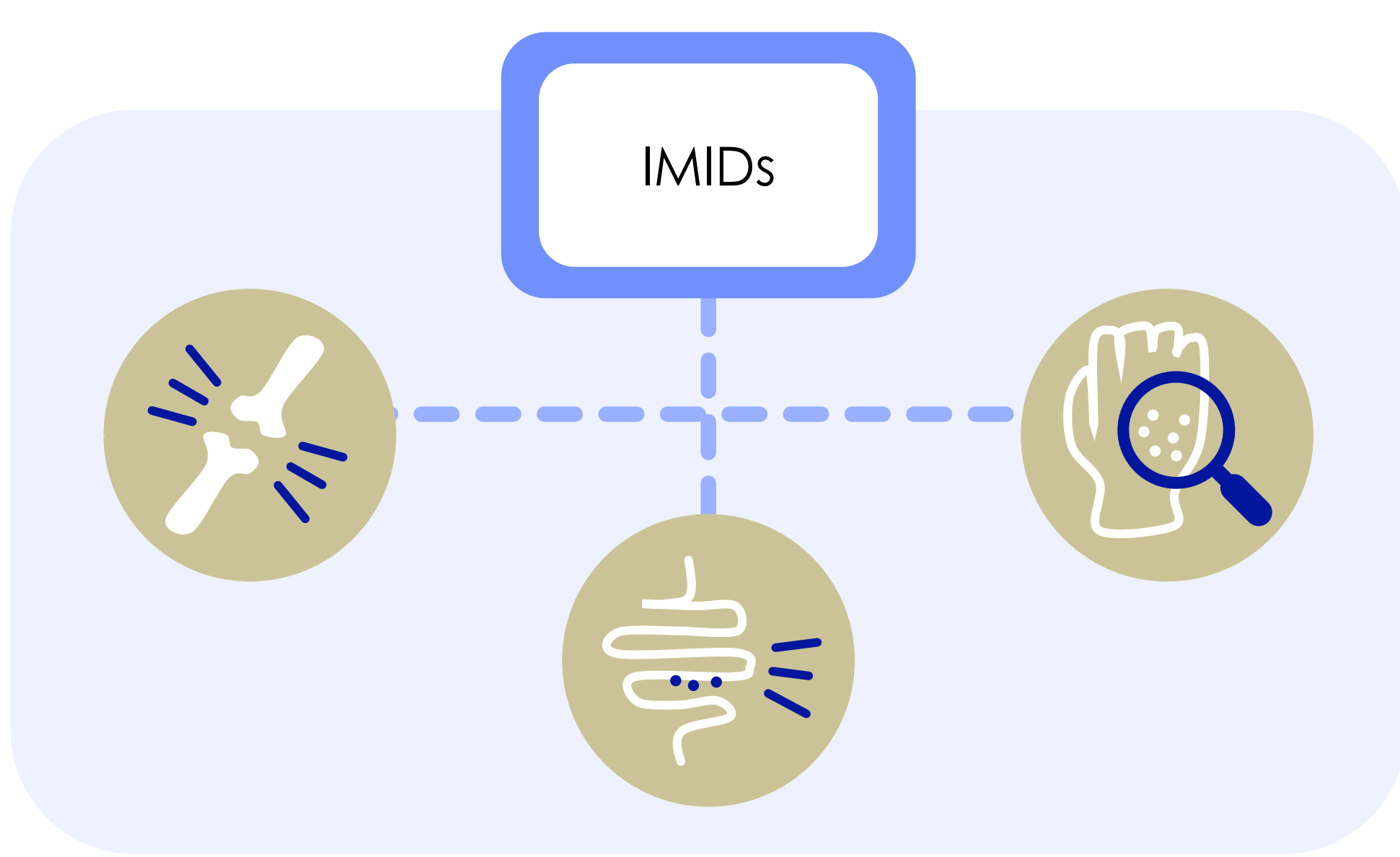
- Full presence
- Full data, with limitations
- Under development
- In collaboration
- Long term plan



Data capabilities

- Started in 2019, updated monthly
- Retrospective hospital data, no extra burden
- Treatment lines and duration
- Patient demographics and coexisting IMIDs
- HCRU metrics per patient & treatment line
- Secure data access
- Reusable for multiple research questions
- Benchmarking across institutions

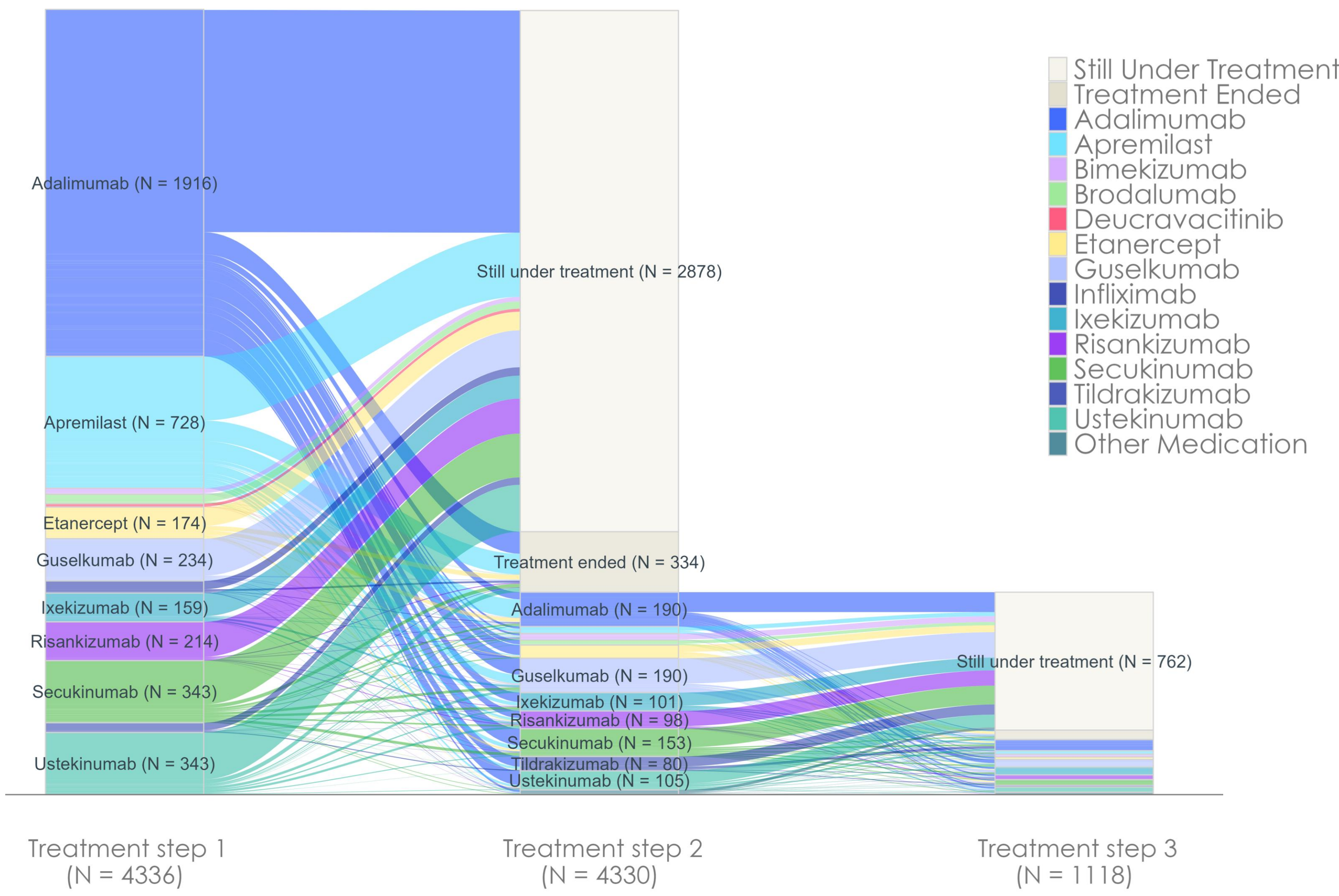
3 core IMID focus areas



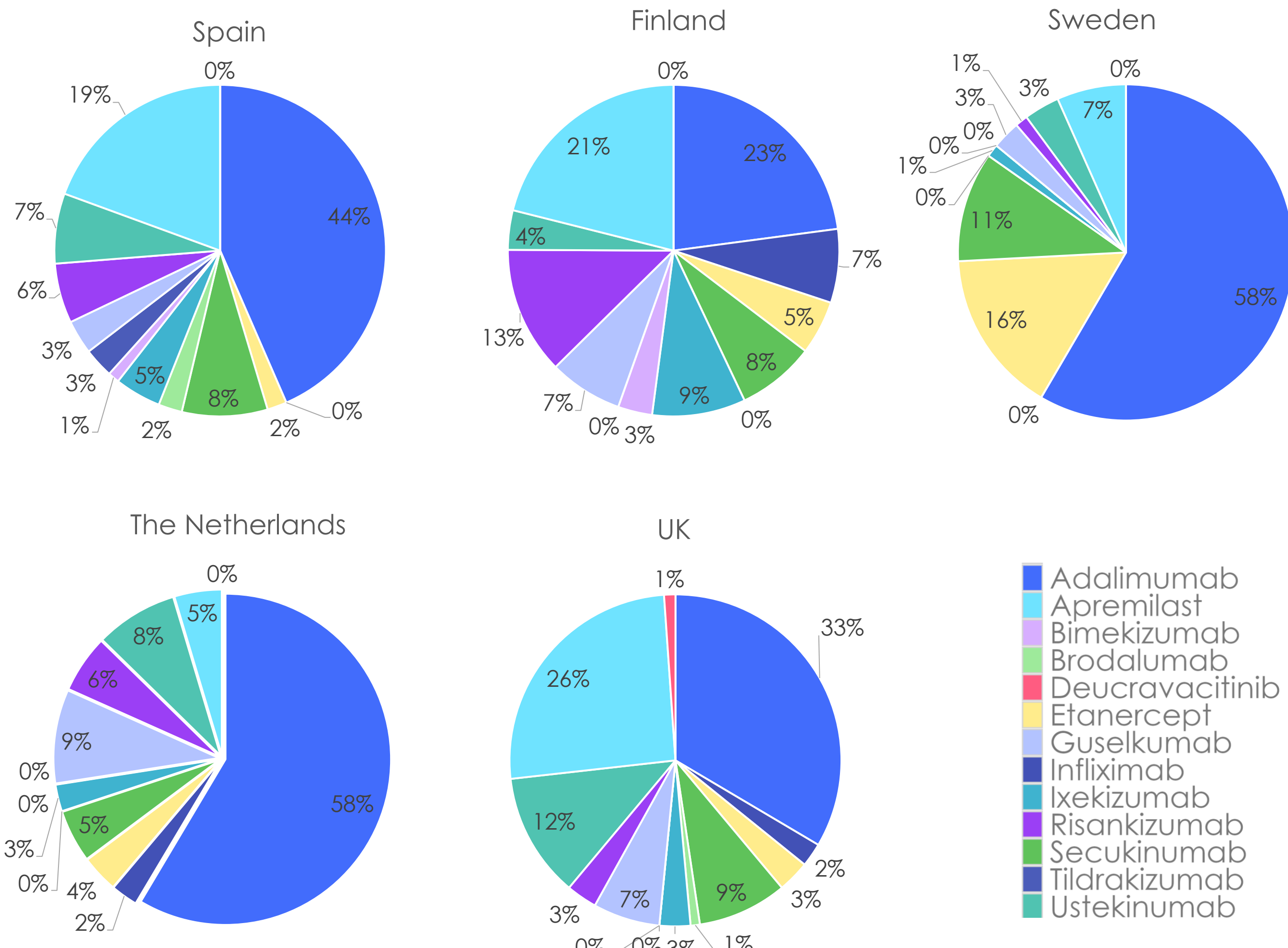
Valuable insights to advance real-world IMID healthcare

Partner hospitals and collaborating institutions participating benefit from data-driven insights that inform and enhance clinical decision-making. Examples include:

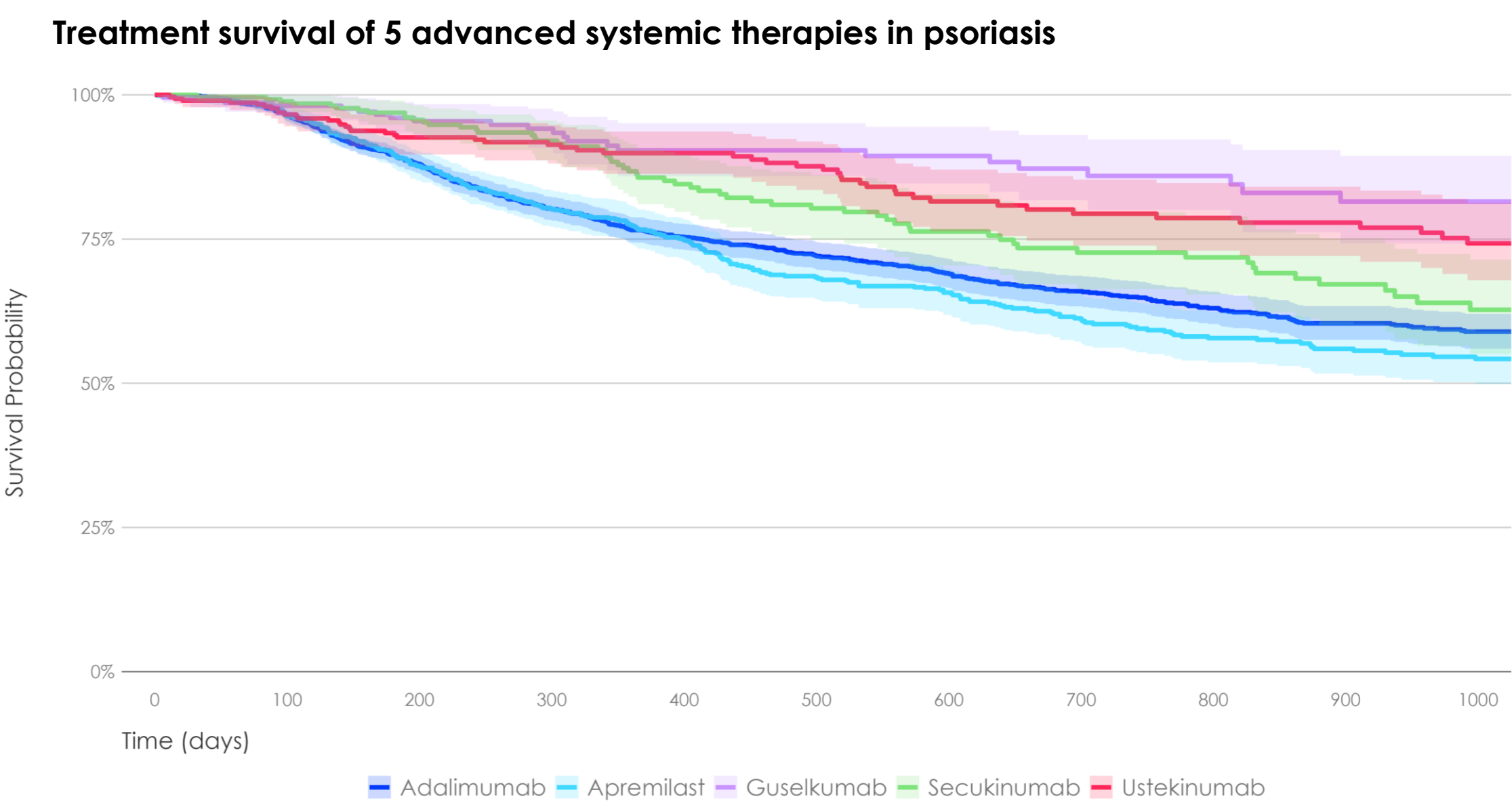
A) Therapy use across treatment lines (sequencing in psoriasis)



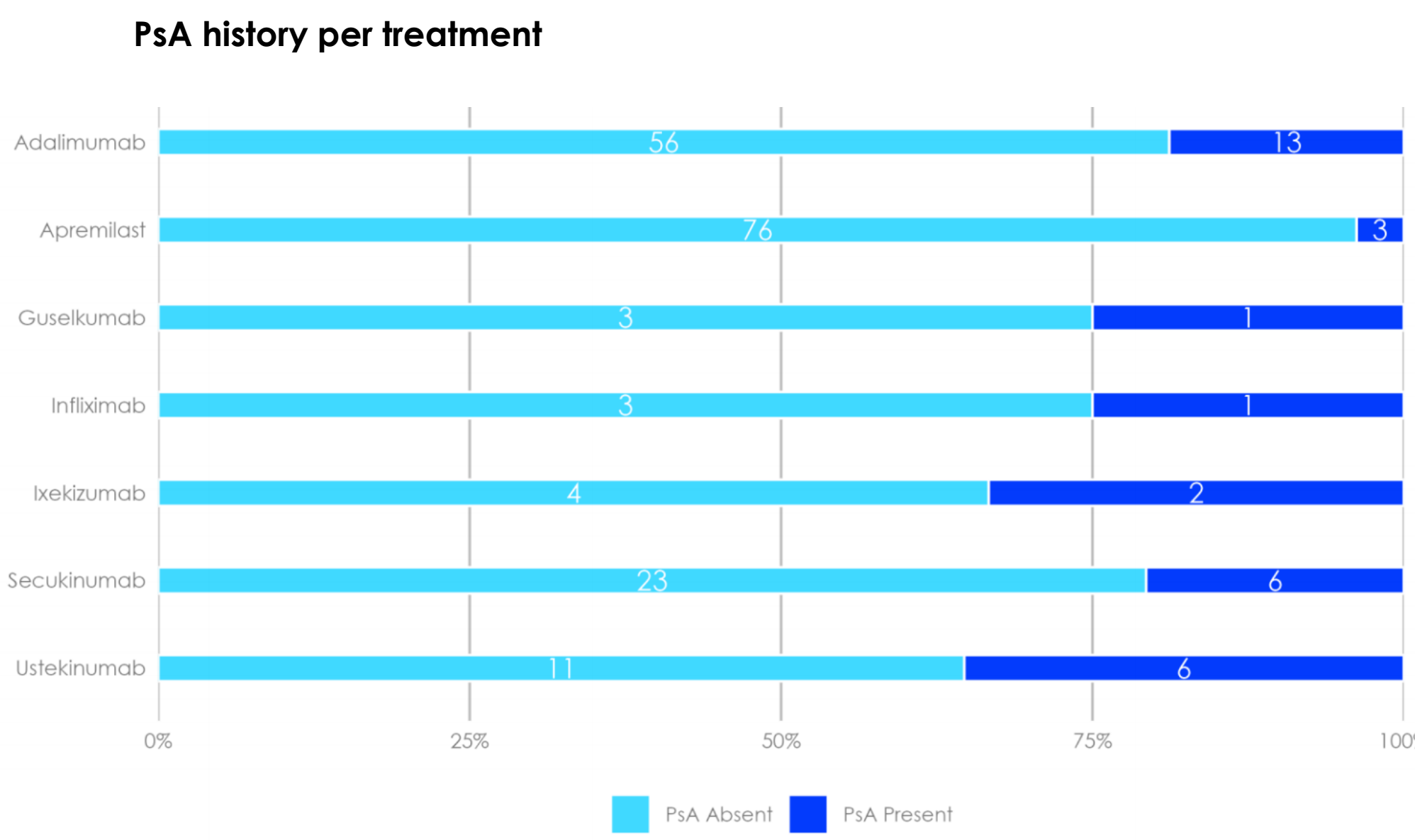
B) Proportion of therapy use per country (naïve psoriasis patients)



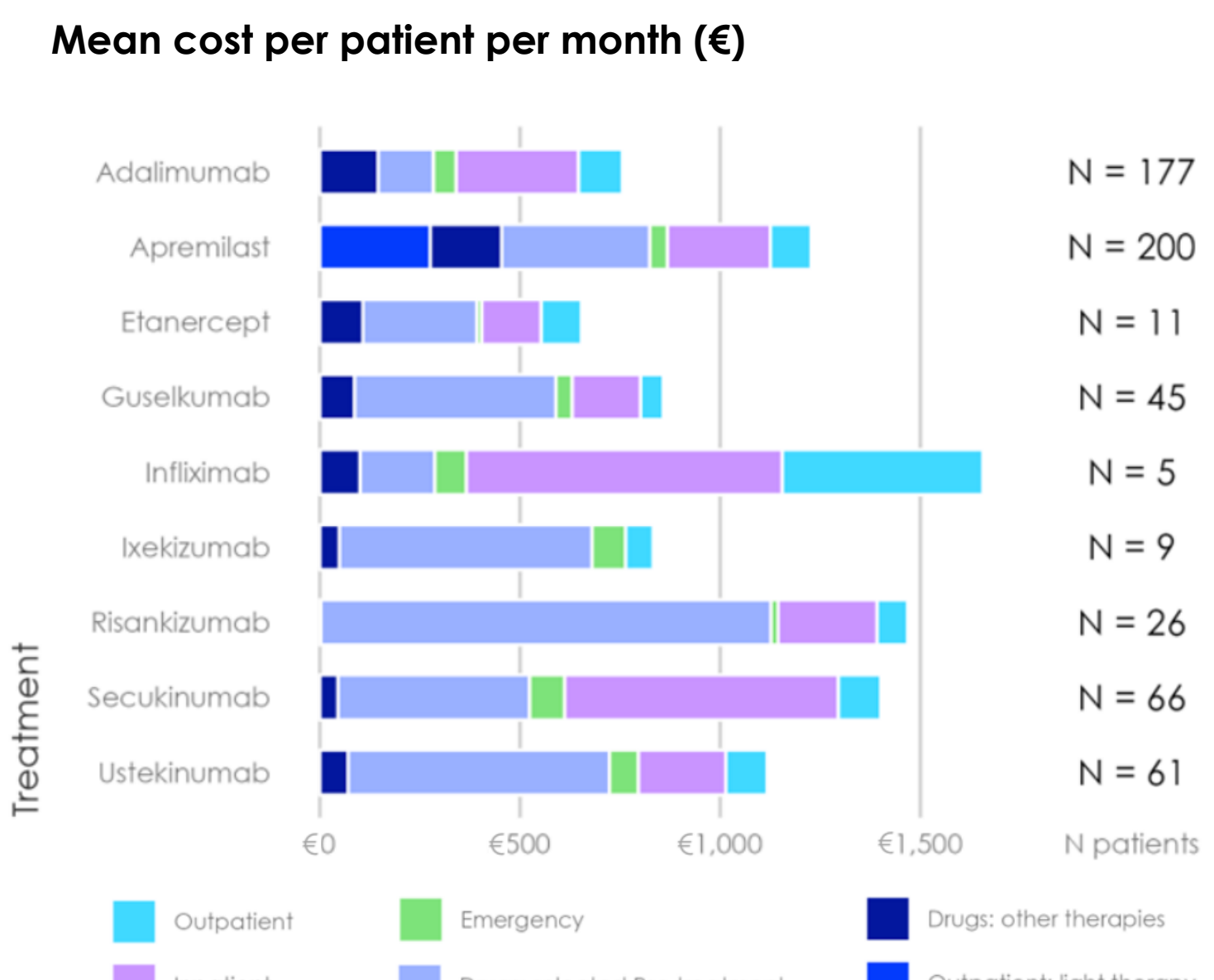
C) Treatment survival top 5 frequently used



D) Coexisting IMIDs



E) Resource utilisation



Figures show example insights from real-world cohorts in the IMID Observatory. **A)** Sankey diagram illustrating treatment trajectories of psoriasis patients across different lines of therapy, including transitions between treatments and points of discontinuation. **B)** Pie charts present the distribution of initial advanced systemic therapy (AST) prescriptions among treatment-naïve psoriasis patients across five European countries. **C)** Kaplan-Meier survival curve illustrates treatment persistence over time (in days) for five different therapies used in psoriasis management. **D)** Bar chart shows medication use in psoriasis patients with a psoriatic arthritis (PsA) history, defined as the diagnosis of PsA in a patient with established psoriasis recorded within 1 year before initiation of advanced systemic therapy. **E)** Bar plot shows the mean cost per patient per month for each AST in psoriasis patients.