

The IMPACT framework: A value assessment framework for holistic health technology assessment

Hakkarainen T.^{1,2}, Haavisto I², Ylittervo O², Leskelä RL²

BACKGROUND

Traditional cost-effectiveness analysis (CEA) remains central to health technology assessment (HTA), informing reimbursement and policy decisions. However, traditional CEA primarily considers direct healthcare costs and health outcomes, often overlooking broader societal and system-level impacts.

Currently there are variations in scope and value domains included in the economic evaluations of European HTA agencies¹ and recent literature underscores the importance broader societal implications, equity, patient-centricity, and sustainability in value assessment²⁻⁵.

OBJECTIVES

This study aims to propose a value assessment framework to support more holistic value assessment in HTA by introducing supplementary value aspects that extend beyond traditional CEA.

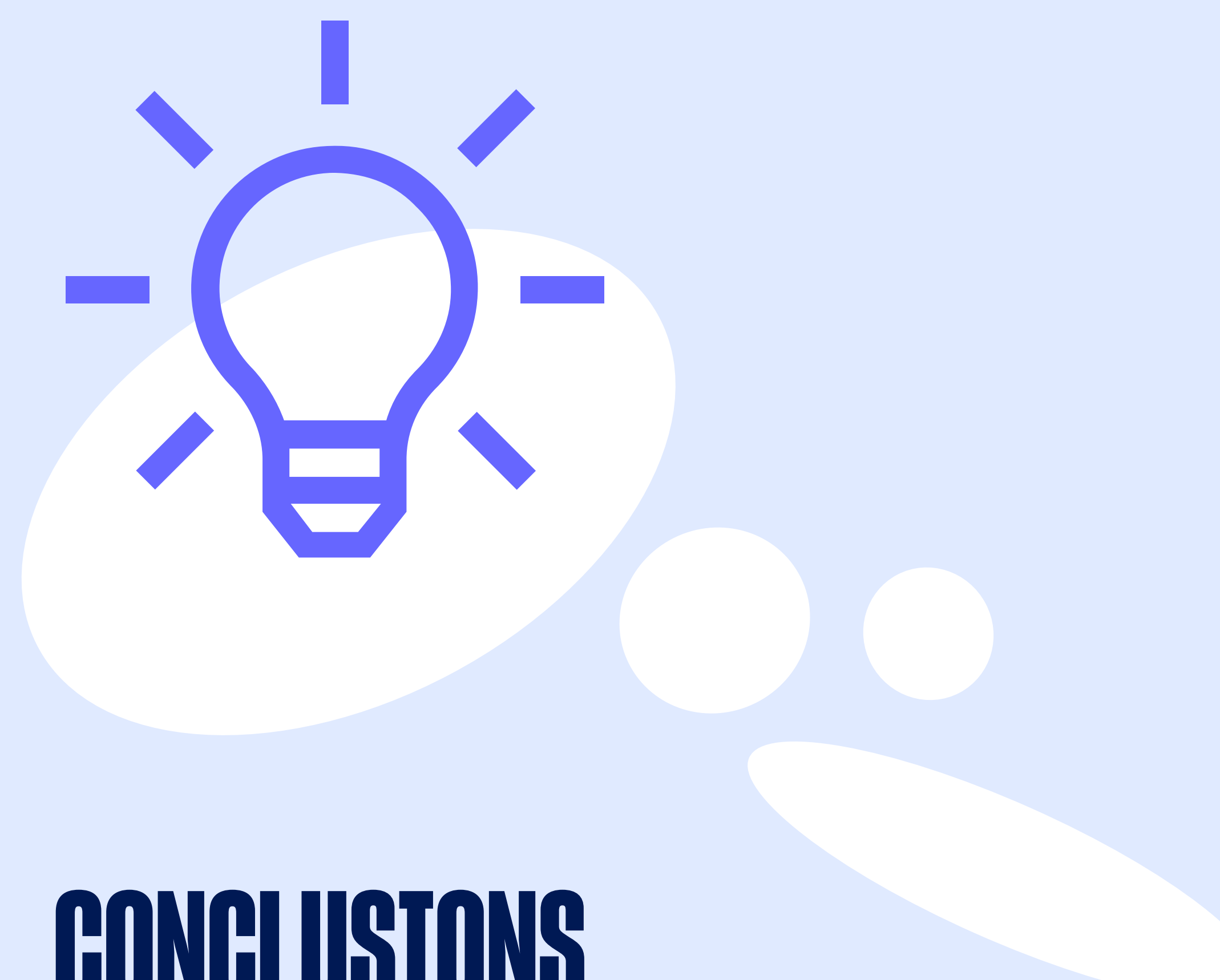
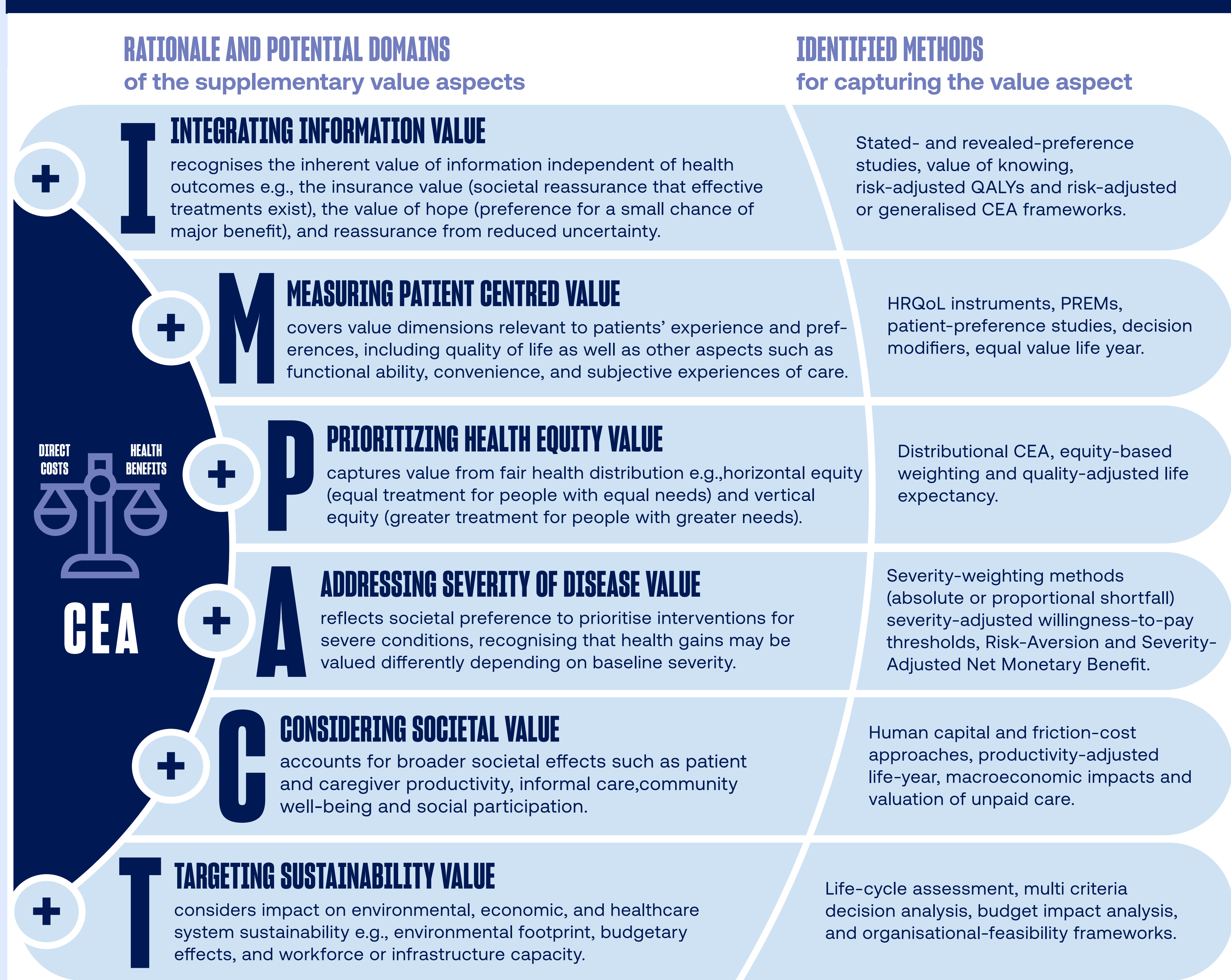
METHODS

A targeted non-systematic literature review was conducted to identify methodological studies in healthcare addressing the limitations of traditional CEA and proposing approaches for a more holistic value assessment.

RESULTS

Based on the review of 101 studies (appendix), the IMPACT framework was developed, consisting of six supplementary value aspects often overlooked in traditional CEA but potentially relevant for a more holistic value assessment. The review also identified methodological approaches from current literature to quantify the six supplementary value aspects. Figure 1 describes the rationale for each supplementary value aspect and potential methodological approaches.

Figure 1. The six supplementary value aspects of the IMPACT framework and proposed methodological approaches. QALY: quality-adjusted life year; CEA: cost-effectiveness analysis; HRQoL: health-related quality of life; PREMs: patient-reported experience measures.



CONCLUSIONS

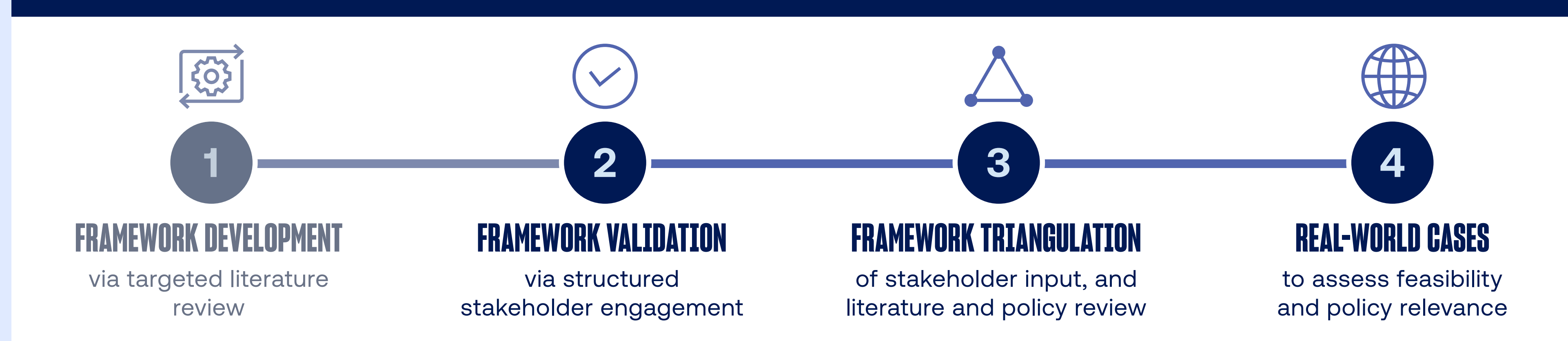
IMPACT is envisioned as a tool to systematically identify contextually relevant value aspects for a given economic evaluation and to guide the selection of appropriate methodological approaches and data requirements for their inclusion.

Incorporating the six value aspects of IMPACT framework to supplement the traditional CEA could potentially enhance the relevance and fairness of HTA decision-making by better reflecting societal preferences and real-world outcomes.

FUTURE RESEARCH

Future research should focus on stakeholder validation and literature and policy review to triangulate the final framework with practical methodological guidance (figure 2). Lastly, real-world case-studies should be conducted to evaluate the feasibility, usability, and policy relevance of the IMPACT framework.

Figure 2. Validation process of the IMPACT framework



REFERENCES

1. Fernandez et al. 2025. doi: 10.1016/j.lpm.2025.104282
2. Reed et al. 2019. doi: 10.1016/j.jval.2019.04.1914
3. Lakdawalla et al. 2022. doi:10.1007/s10198-021-01367-0
4. Shafrin et al. 2024. doi:10.1515/fhep-2024-0014
5. Neumann et al. 2022. doi:10.1016/j.jval.2022.01.010

AFFILIATIONS

1. University of Eastern Finland, Kuopio, Finland
2. Nordic Healthcare Group, Espoo, Finland



**SCAN HERE TO
CONTRIBUTE TO THE
VALIDATION OF THE
IMPACT FRAMEWORK**