

ISPOR / ISPE Summit on  
**Real-World Evidence in  
Health Care Decision Making**



October 20, 2017  
Grand Hyatt Hotel, Washington, DC, USA  
[ispor.org/RWEinHealthcareDecisions](http://ispor.org/RWEinHealthcareDecisions)



## Welcome



Nancy Berg  
CEO & Executive Director  
ISPOR

## ISPOR's Ambition

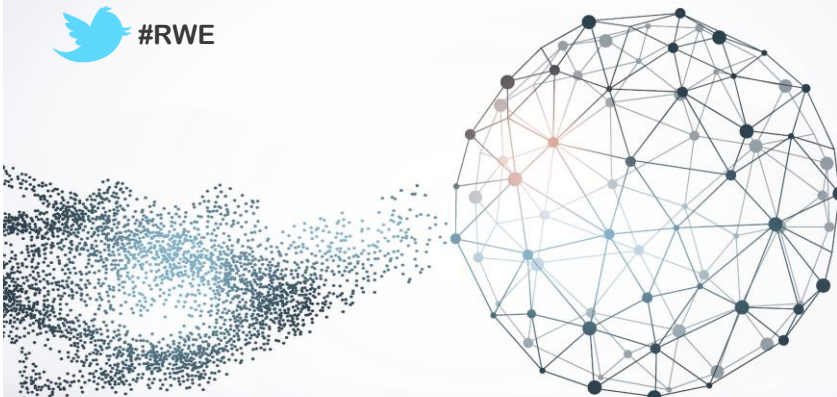


*To be an innovative catalyst in health care decision making*



## Welcome to the ISPOR/ISPE Summit on...

*Real-World Evidence in Health Care Decision Making*



## Welcome



Harold Sox, MD  
PCORI  
Washington, DC, USA

## Today's Agenda

- 9:15AM – Keynote Address
- 9:30AM – Framing the Problem & Presentation of Recommendations
- 10:40AM – Break
- 11:00AM – Regulatory/HTA Reactions
- 12:00PM – Lunch
- 1:10PM – Afternoon Session Welcome
- 1:15PM – Other Key Stakeholder Perspectives
- 2:15PM – Medical Editor Panel
- 3:15PM – Closing Remarks
- 3:30PM - Adjourn

## ISPOR/ISPE Joint Task Force Co-Chairs

### Transparency Paper Co-Chairs



Marc Berger, MD  
New York, NY,  
USA



C. Daniel Mullins, PhD  
University of Maryland,  
Baltimore, MD, USA

### Reproducibility Paper Co-Chairs



Sebastian Schneeweiss,  
MD, ScD, FISPE  
Harvard Medical School,  
Boston, MA, USA



Shirley Wang, PhD, MSc  
Harvard Medical School,  
Boston, MA, USA

## ISPOR's Priorities

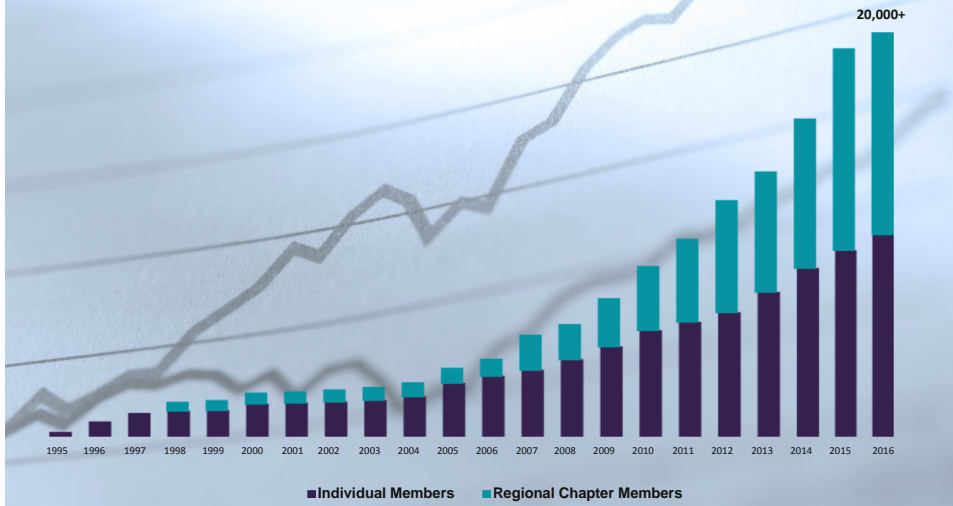


- Delivering member/customer value
- Continue to improve the science of HEOR through relationships, meetings, and publishing
- Leverage ISPOR's global multistakeholder perspectives
  - Leaders and learners
- Build on ISPOR's role as a convener and catalyst
  - Global networks
  - Shaping future content strategies and consensus building
- Enhance our business models to ensure we have the right platforms to support growth
- Continue to elevate the participation of payers, clinical decision makers, and others throughout ISPOR

## Delivering Member Value



### 20,000+ ISPOR Members



## Advancing the Science Upcoming ISPOR Conferences



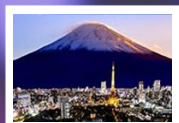
**20th Annual European Congress**  
4-8 November 2017  
Glasgow, Scotland



**23rd Annual International Meeting**  
May 19-23, 2018  
Baltimore, MD, USA



**1st Middle East Conference**  
September 2018  
Dubai, United Arab Emirates



**8th Asia-Pacific Conference**  
8-11 September 2018  
Tokyo, Japan

## Advancing the Science ISPOR Journals



## Collaboration Strategy



# Communication and Collaboration



# Investing in Our Mission



ISPOR invests in key initiatives that support the future generation of leaders, capacity building, and the science of HEOR. The Society allocated US \$1.6 million in 2016 toward these programs.



## Keynote Address



Harold Sox, MD  
PCORI  
Washington, DC, USA

## Spin in reporting study results



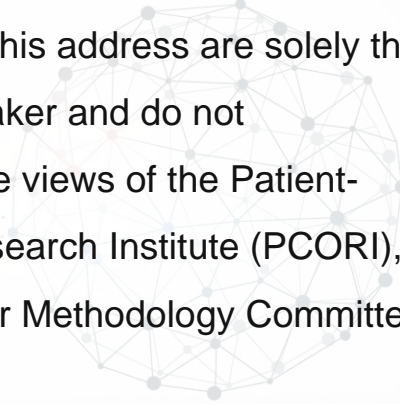
Harold C. Sox, M.D. MACP  
The Patient-Centered Outcomes Research Institute





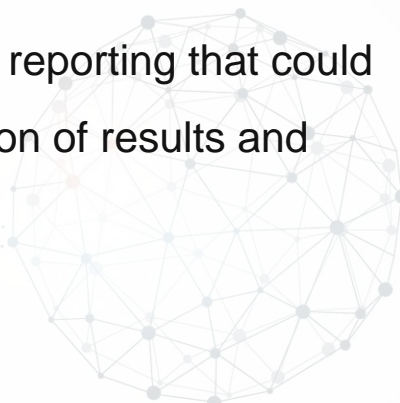
---

The views presented in this address are solely the responsibility of the speaker and do not necessarily represent the views of the Patient-Centered Outcomes Research Institute (PCORI), its Board of Governors or Methodology Committee.



---

Spin defined: specific reporting that could distort the interpretation of results and mislead readers.



---

Reporting and interpretation of randomized controlled trials with statistically non-significant primary outcomes

Boutron I, Dutton S, Ravaud P,  
Altman DG.

JAMA; 2010;303:2058-64

- 
- Study objective: to measure the frequency and nature of spin.
  - Sample: PubMed → all 1735 trials in December 2006 → 72 included.
  - All studies had statistically non-significant results for primary outcome(s).
  - Defined spin for study purposes
  - Developed classification of spin
  - Read in duplicate. Kappa=0.47 (moderate agreement).
  - Measured frequency of spin in the 72 articles

Boutron et al. JAMA. 2010;303:2058-64.

Spin: in a trial with statistically non-significant primary outcomes:

**Specific reporting strategies to highlight that the experimental treatment is beneficial or to distract the reader from the statistically non-significant results.**

- A focus on statistically significant results
  - Within-group comparisons, subgroups, secondary outcomes.
- Interpreting primary outcome as treatment equivalence or comparable effectiveness.
- Claiming beneficial effect for the primary outcome

## Characteristics of studies

| Characteristic                                      | Result        |
|---|---------------|
| Specialty journal                                   | 95.8%         |
| Primary outcome is efficacy of treatment            | 87.5%         |
| Sample size (median,)                               | 84 (46-206)   |
| Journal impact factor (median, interquartile range) | 2.9 (2.3-4.5) |
| No. citations in 2008 (median, interquartile range) | 4 (1-7)       |

## Results

| Outcome  | Proportion (%) N=72 |
|--|---------------------|
| Abstract clearly identifies primary outcomes                   | 61%                 |
| Abstract reports secondary outcome as primary                  | 4.2%                |
| Abstracts reported the effect size & 95% CI                    | 12.5%               |
| Abstract reported numerical results for primary outcome        | 61%                 |
| Main text reported effect size and 95% CI for primary outcomes | 22%                 |

## Spin strategies when primary result is statistically non-significant

- Focus on the statistically significant results (within-group, secondary outcomes, subgroup analyses).
- Focus on statistically significant within-study arm improvement from baseline for one arm but not the other (or for both arms combined).
- Focus on *per protocol* results.
- Describe a statistically non-significant outcome as denoting equivalence or non-inferiority.
- Claim efficacy despite the primary outcome result.

## Spin strategies when primary result is statistically non-significant

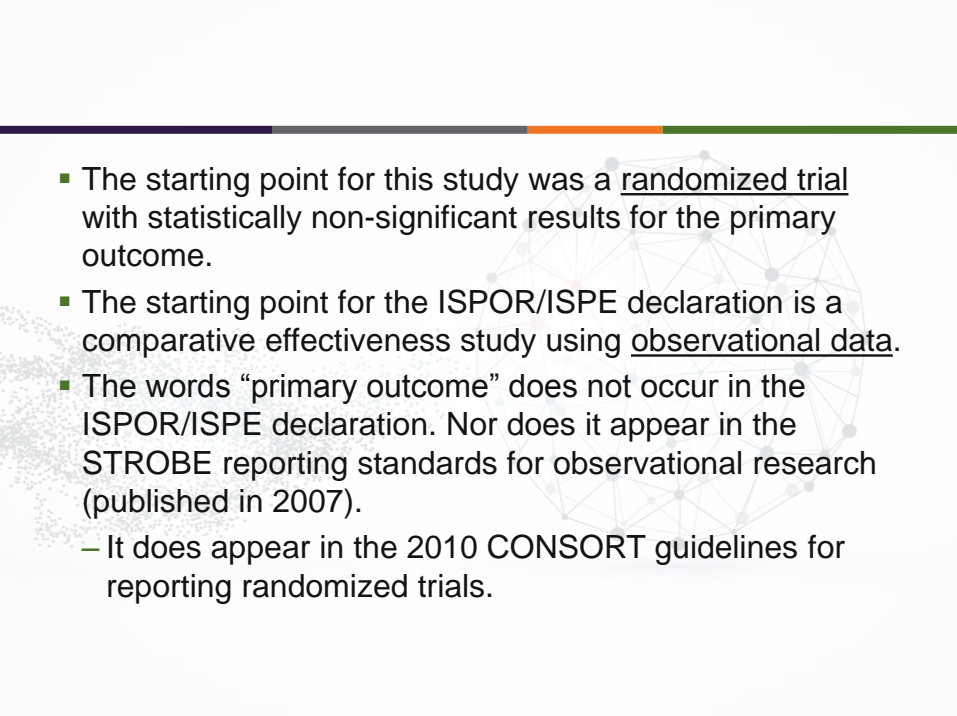
---

- Acknowledge statistically non-significant primary result but emphasize beneficial effect or other results that are statistically significant.
- Conclude that a statistically non-significant results rules out an adverse event.
- Recommend using the treatment anyway.
- Spin in the abstract but no spin in the main text.

---

At the 2017 Peer Review Congress, one plenary session was devoted to “bias in reporting and publication of research.”

Two presentations were systematic reviews of the occurrence of spin.

- 
- The starting point for this study was a randomized trial with statistically non-significant results for the primary outcome.
  - The starting point for the ISPOR/ISPE declaration is a comparative effectiveness study using observational data.
  - The words “primary outcome” does not occur in the ISPOR/ISPE declaration. Nor does it appear in the STROBE reporting standards for observational research (published in 2007).
    - It does appear in the 2010 CONSORT guidelines for reporting randomized trials.

## Some questions



- Does the increasing interest in the potential effects of spin call for a statement of good practice about reporting outcomes in STROBE and CONSORT?
- Should reporting guidelines for observational studies follow the CONSORT lead in specifying primary and secondary outcomes?
- Does STROBE need an extension for RWE studies?

## FRAMING THE PROBLEM & PRESENTATION OF RECOMMENDATIONS



**Marc Berger, MD**  
Pfizer  
New York, NY, USA

### ISPOR/ISPE Summit on **Real-World Evidence in Health Care Decision Making**



### FRAMING THE PROBLEM & PRESENTATION OF RECOMMENDATIONS



## FRAMING THE PROBLEM & PRESENTATION OF RECOMMENDATIONS

### Transparency Issues



Marc Berger, MD  
Pfizer, New York,  
NY, USA

### Reproducibility Issues



Sebastian Schneeweiss,  
MD, ScD, FISPE  
Harvard Medical School,  
Boston, MA, USA

### Transparency Recommendations



C. Daniel Mullins, PhD  
University of Maryland,  
Baltimore, MD, USA

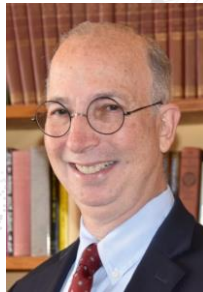
### Reproducibility Recommendations



Shirley Wang, PhD, MSc  
Harvard Medical School,  
Boston, MA, USA

## FRAMING THE PROBLEM & PRESENTATION OF RECOMMENDATIONS

### Transparency Issues

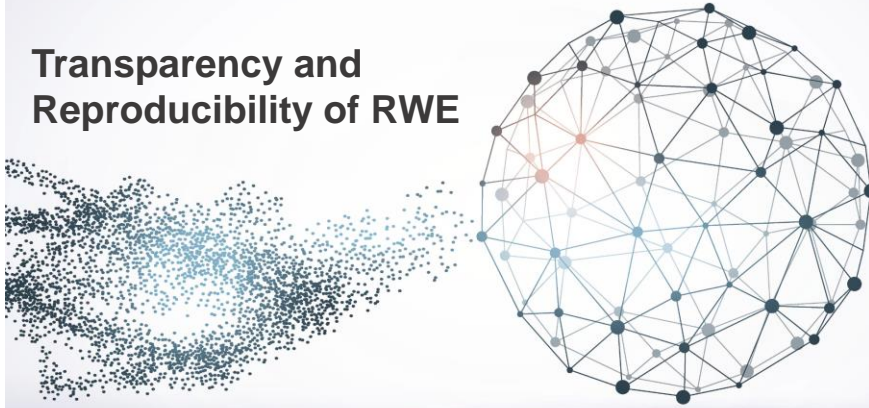


Marc Berger, MD  
Pfizer  
New York, NY, USA



ISPOR / ISPE Summit on  
**Real-World Evidence in  
Health Care Decision Making**

**Transparency and  
Reproducibility of RWE**

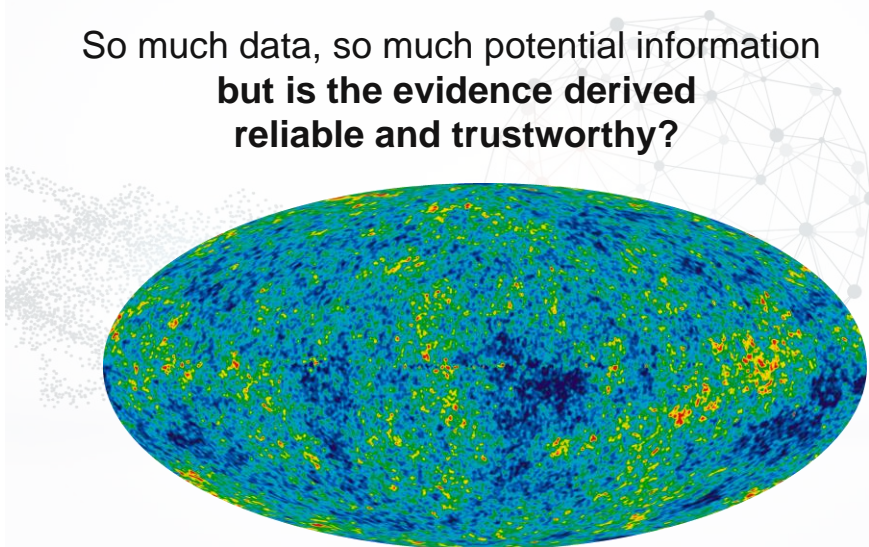


Marc L. Berger, MD



**The Challenge of Real World Evidence**

So much data, so much potential information  
**but is the evidence derived  
reliable and trustworthy?**



## Making RWE useful requires:

- **Quality production**
  - Careful data collection and/or curation
  - Good analytic methods
  - Good procedural practices or “study hygiene”
  - Transparent study procedures to enable replication
- **Responsible consumption**
  - Informed interpretation
  - Fit-for-purpose application



VALUE IN HEALTH 20 (2017) 1003–1008

Available online at [www.sciencedirect.com](http://www.sciencedirect.com)  
**ScienceDirect**  
 journal homepage: [www.elsevier.com/locate/jval](http://www.elsevier.com/locate/jval)

ELSEVIER

Value  
Health

Original Report

**Good Practices for Real-World Data Studies of Treatment and/or Comparative Effectiveness: Recommendations from the Joint ISPOR-ISPE Special Task Force on Real-World Evidence in Health Care Decision Making**

Marc L. Berger<sup>1,\*</sup>, Harold Sox<sup>2</sup>, Richard J. Willke<sup>3</sup>, Diana L. Brinker<sup>4</sup>, Hans-Georg Eichler<sup>5</sup>, Wim Goettsch<sup>6</sup>, David Madigan<sup>7</sup>, Amr Makady<sup>8</sup>, Sebastian Schneeweiss<sup>9</sup>, Rosanna Tarricone<sup>9</sup>, Shirley V. Wang<sup>9</sup>, John Watkins<sup>10</sup>, C. Daniel Mullins<sup>11</sup>



CrossMark

**PDS** Pharmacoepidemiology  
& Drug Safety

Official Journal of the  
International Society for  
Pharmacoepidemiology

ORIGINAL REPORT

### Reporting to Improve Reproducibility and Facilitate Validity Assessment for Healthcare Database Studies V1.0

Shirley V. Wang<sup>1,2</sup>  | Sebastian Schneeweiss<sup>1,2</sup> | Marc L. Berger<sup>3</sup> | Jeffrey Brown<sup>4</sup> | Frank de Vries<sup>5</sup> | Ian Douglas<sup>6</sup> | Joshua J. Gagne<sup>1,2</sup>  | Rosa Gini<sup>7</sup> | Olaf Klungel<sup>8</sup> | C. Daniel Mullins<sup>9</sup> | Michael D. Nguyen<sup>10</sup> | Jeremy A. Rassen<sup>11</sup> | Liam Smeeth<sup>6</sup> | Miriam Sturkenboom<sup>12</sup> |

on behalf of the joint ISPE-IPOR Special Task Force on Real World Evidence in Health Care Decision Making

## Good Procedural Practices for Clinical Studies (“Study Hygiene”)

- **Pre-Approval RCTs**

- Pre-registration on public website (ClinicalTrials.Gov)
- Completion of an *a priori* protocol and data analysis plan
- Transparent documentation for any changes in study procedures
- Expectation that all RCT results will be made public

- **Real World Data Studies**

- ***No well-accepted recommendations for good procedural practices***
  - A few groups have begun to weigh in here; needs reinforcement
  - Must address data dredging, publication bias issues
  - Other concerns include internal validity, inaccurate recording of health events, opaque reporting

## Good and Transparent study procedures to enable replication

- The importance of achieving consistently reproducible research is recognized in many reporting guidelines
  - STROBE, RECORD, PCORI Methodology Report, EnCePP
  - ISPE Guidelines for Good Pharmacoepidemiology Practice (GPP)
- While these guidelines certainly increase transparency, even strict adherence to existing guidance would not provide all the information necessary for full reproducibility.

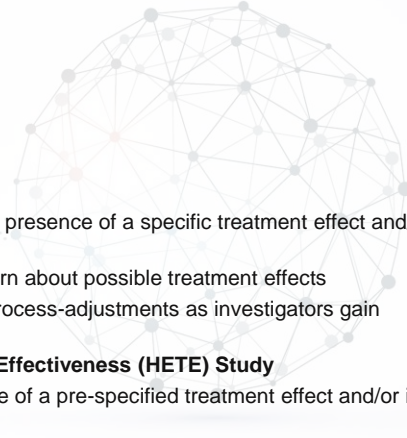
## Categories of RWD Studies

### ▪ Safety Studies

- Signal Detection
- Signal Evaluation

### ▪ Effectiveness Studies

- **Exploratory Study**
  - Typically does not hypothesize the presence of a specific treatment effect and/or its magnitude
  - Primarily serves as first step to learn about possible treatment effects
  - Less pre-planned and allows for process-adjustments as investigators gain knowledge of the data
- **Hypothesis-Evaluating Treatment Effectiveness (HETE) Study**
  - Evaluates the presence or absence of a pre-specified treatment effect and/or its magnitude
  - Tests a specific hypothesis in a specific data set
  - In conjunction with other evidence, may lead to treatment recommendations



## FRAMING THE PROBLEM & PRESENTATION OF RECOMMENDATIONS

### *Transparency Issues*



**Marc Berger, MD**  
Pfizer  
New York, NY, USA



# FRAMING THE PROBLEM & PRESENTATION OF RECOMMENDATIONS

## Reproducibility Issues

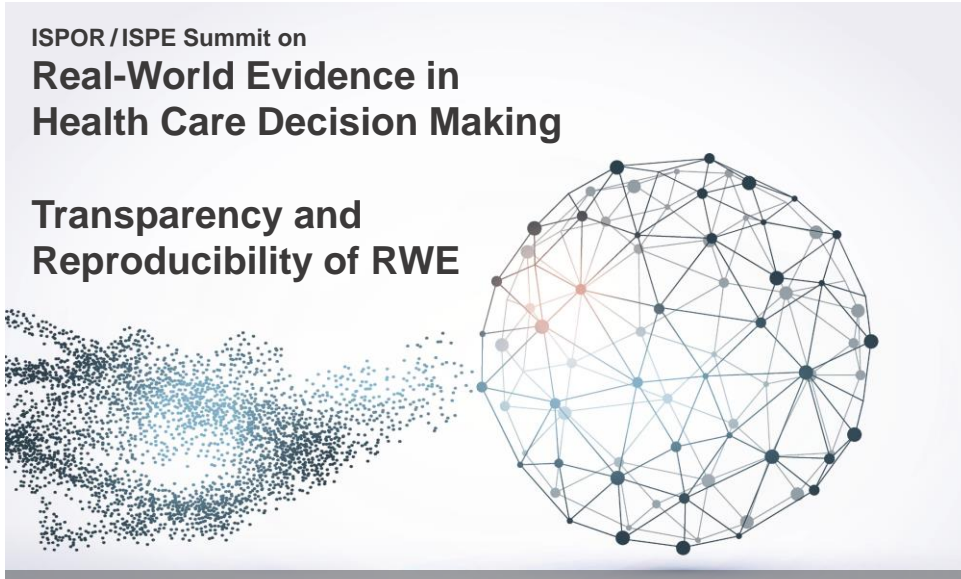


Sebastian Schneeweiss, MD, ScD, FISPE  
Harvard Medical School  
Boston, MA, USA



## ISPOR / ISPE Summit on Real-World Evidence in Health Care Decision Making

### Transparency and Reproducibility of RWE



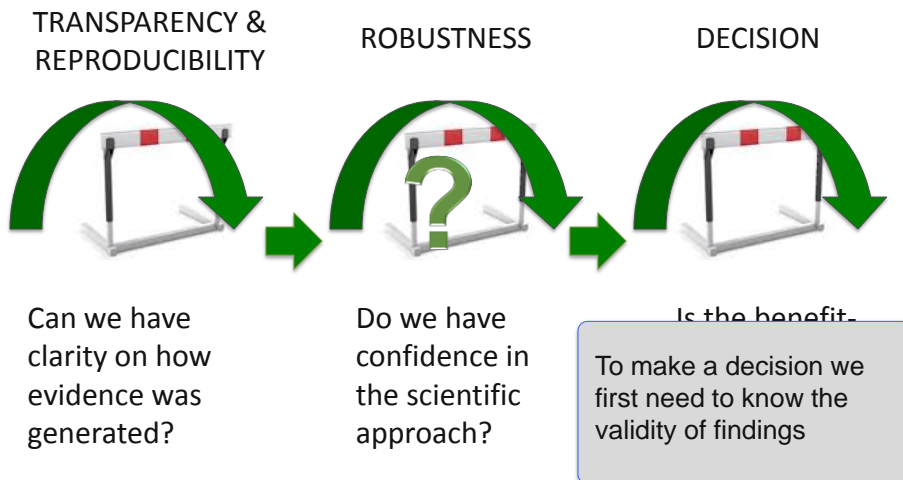
Sebastian Schneeweiss, MD, ScD



## Regulatory decision making with RWE



## Regulatory decision making with RWE

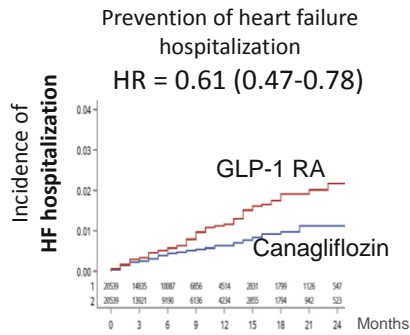


Effectiveness Example **blinded** to RCT findings:



Cardiovascular Safety of Canagliflozin Vs. Other Antidiabetic Agents in Routine Care  
 Paterson F, Goldfine AB, Schneeweiss S, Glynn RJ, Liu J, Kim SC<sup>1,2</sup>  
<sup>1</sup>Division of Pharmacotherapy and Pharmacoepidemiology, Brigham Young University, Provo, UT, United States; <sup>2</sup>Division of Endocrinology, Brigham Young University, Provo, UT, United States

American Diabetes Association  
 77<sup>th</sup> SCIENTIFIC SESSIONS  
 EXPERIENCE NEW HORIZONS IN DIABETES  
 SAN DIEGO, CA  
 JUNE 9-13, 2017



Effectiveness Example **blinded** to RCT findings:



Cardiovascular Safety of Canagliflozin Vs. Other Antidiabetic Agents in Routine Care  
 Paterson F, Goldfine AB, Schneeweiss S, Glynn RJ, Liu J, Kim SC<sup>1,2</sup>  
<sup>1</sup>Division of Pharmacotherapy and Pharmacoepidemiology, Brigham Young University, Provo, UT, United States; <sup>2</sup>Division of Endocrinology, Brigham Young University, Provo, UT, United States

American Diabetes Association  
 77<sup>th</sup> SCIENTIFIC SESSIONS  
 EXPERIENCE NEW HORIZONS IN DIABETES  
 SAN DIEGO, CA  
 JUNE 9-13, 2017

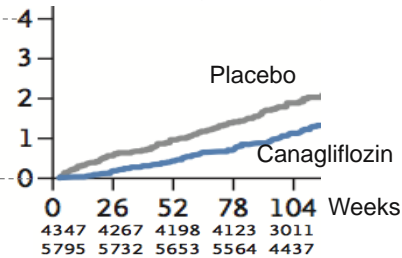
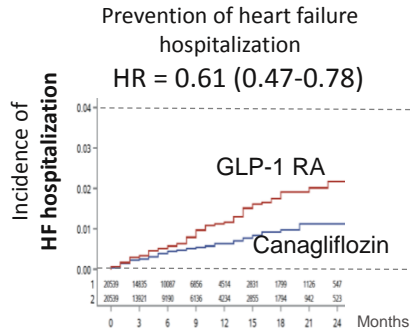
ORIGINAL ARTICLE

Canagliflozin and Cardiovascular and Renal Events in Type 2 Diabetes

Bruce Neal, M.D., Kenneth W. Mahaffey, Ngozi Erondu, Mehul Desai, M.D., and David R. Matthews, D.Phil., B.M., B.Ch., for the CANVAS Program Collaborative Group<sup>a</sup>

CANVAS

Prevention of heart failure hospitalization  
 HR = 0.67 (0.52-0.87)



# Regulatory decision making with RWE

TRANSPARENCY & REPRODUCIBILITY

ROBUSTNESS

DECISION



Can we have clarity on how evidence was generated?

Do we have

To assess validity we first need to know how the study was implemented

Is the benefit-harm profile acceptable?

## Sharing programming code is not helpful

```

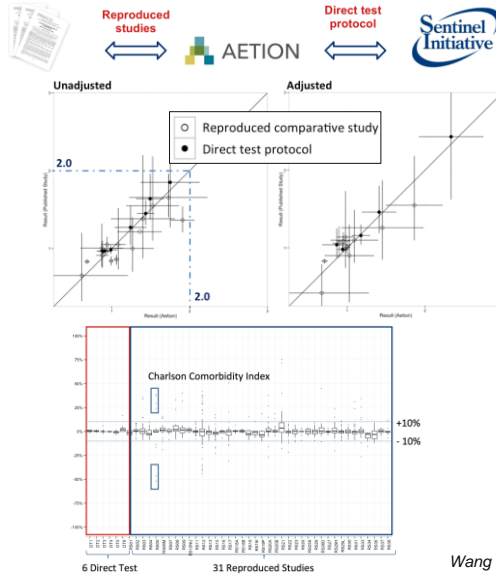
*****
* benzo meds
*****
%macro hosp;
%do i = 2004 %to 2012;
data meds;
set in dispensing_&i(rename={xdate =
class = put(ndc,$study),
if class = "other";
keep patid startdt class ndc;
run;
proc sort nodup;
by patid ndc startdt;
run;
%wend;
data meds2013;
set in dispensing_2013a(rename={xdate =
class = put(ndc,$study),
if class = "other";
keep patid startdt class ndc;
run;
proc sort nodup;
by patid ndc startdt;
run;
data meds;
set %do i = 2004 %to 2013;
meds&i;
%wend;
run;
%mend hosp;
%hosp;
proc sort nodupkey data = meds;
by patid startdt ndc;
run;
proc sort nodupkey data = meds out = ids;
by patid;
run;
options ps = 54 ls = 72 sbs = max;
libname dir "/Prd/home/0037/id_282_hypnotic/";
libname out "/Prd/home/0037/id_282_hypnotic/united/";
libname ncd "/Prd/app/home/1/NCI/";
libname in spde "/storage1/cdm_data/MS_OPTUM_FULL/";
data ids;
set out;
keep patid indexdt;
run;
proc sort;
by patid indexdt;
run;
%macro hosp;
%do year = 2006 %to 2012;
merge in.diagnos_&year(in = in2 keep= patid adate dx)
ids(in = in1);
by patid;
if in1 and in2;
if {indexdt - 180} <= adate < {indexdt};
keep patid indexdt dx;
run;
proc sort nodupkey;
by patid indexdt dx;
run;
%mend hosp;
data dx2013a;
merge in.diagnos_2013a(in = in2 keep= patid adate dx)
ids(in = in1);
by patid;
if in1 and in2;
if {indexdt - 180} <= adate < {indexdt};
keep patid indexdt dx;
run;
proc sort nodupkey;
data romanca;
set priet(rename={dx = KCD});
disease = "hypnotic";
if substr(KD,1,3) = "430" or substr(KD,1,3) = "412";
then disease = "m";
if KCD = "40201" or KCD = "40211" or KCD = "40291" or
substr(KD,1,4) = "429" or substr(KD,1,3) = "425" or
substr(KD,1,3) = "426" then disease = "oif";
if substr(KD,1,3) = "440" or substr(KD,1,3) = "441" or
substr(KD,1,3) = "442" or substr(KD,1,3) = "443" or
substr(KD,1,4) = "447" or substr(KD,1,4) = "7854"
then disease = "p";
if KCD = "36234" or substr(KD,1,3) = "430" or
substr(KD,1,3) = "441" or substr(KD,1,3) = "442" or
substr(KD,1,3) = "443" or substr(KD,1,3) = "434" or
substr(KD,1,3) = "435" or substr(KD,1,3) = "436" or
substr(KD,1,3) = "437" or substr(KD,1,3) = "437" or
substr(KD,1,3) = "438" or substr(KD,1,3) = "7814" or
substr(KD,1,4) = "7843" or substr(KD,1,4) = "9930"
then disease = "other";
if substr(KD,1,4) = "331" or substr(KD,1,4) = "3310" or
substr(KD,1,4) = "3311" or substr(KD,1,4) = "3312" or
substr(KD,1,3) = "290" then disease = "other";
if substr(KD,1,4) = "4150" or substr(KD,1,4) = "4168" or
substr(KD,1,4) = "4169" or substr(KD,1,3) = "491" or
substr(KD,1,3) = "492" or substr(KD,1,3) = "493" or
substr(KD,1,3) = "498" or substr(KD,1,3) = "496"
then disease = "other";
if substr(KD,1,3) = "710" or substr(KD,1,3) = "714"
then disease = "neuro";
if substr(KD,1,3) = "531" or substr(KD,1,3) = "532" or
substr(KD,1,3) = "533" or substr(KD,1,3) = "534"
then disease = "psd";
174 <= substr(KD,1,3) <= 190 or
substr(KD,1,4) = 1789 or
substr(KD,1,4) = 1789

```

⇒ Line programming for healthcare database analytics  
 1) lacks transparency  
 2) lacks reproducibility against protocol



# Pilot study: Lack of reporting details make RWD studies non-reproducible



**Transparency and Reproducibility of Observational Cohort Studies Using Large Healthcare Databases.**

SV Wang<sup>1</sup>, P Vercillari<sup>2</sup>, JA Ryan<sup>3</sup>, A Parrish<sup>4</sup>, M Gorman<sup>5</sup>, S Gorman<sup>6</sup>, S Gorman<sup>7</sup>, S Gorman<sup>8</sup>, S Gorman<sup>9</sup>, S Gorman<sup>10</sup>, S Gorman<sup>11</sup>, S Gorman<sup>12</sup>, S Gorman<sup>13</sup>, S Gorman<sup>14</sup>, S Gorman<sup>15</sup>

The scientific community and decision makers are increasingly concerned about transparency and reproducibility of epidemiologic studies using commercially available databases. We identified a nonrepresentative sample of 28 descriptions of observational cohort studies from reproductive, five because of violations of fundamental principles of transparency and reproducibility. Seven studies were excluded from reproduction, five because of violations of fundamental principles of transparency and reproducibility. Once reproducibility is achieved, the conversation can be elevated to assess whether suboptimal design choices led to avoidable bias and whether findings are replicable in other data sources.

**Study Highlights**

**WHAT IS THE CURRENT KNOWLEDGE ON THE TOPIC?**  
 The scientific community and decision makers are increasingly concerned about transparency and reproducibility of biomedical science.

**WHAT QUESTION DID THIS STUDY ADDRESS?**  
 How high specific efforts to reproduce epidemiologic studies have drawn attention to this issue. In addition, there has not yet been a large-scale effort to evaluate the reproducibility of healthcare database studies.

**WHAT THIS STUDY ADDS TO OUR KNOWLEDGE**  
 This study highlights the need for greater transparency in reporting, better database studies can be reproduced with great accuracy, however, there is great variability in the degree to which recently published healthcare database studies are reproducible. The reproduction team made informed guesses in >50% of reproduced studies, highlighting the need for greater transparency in biomedical science.

**WHAT THIS MIGHT CHANGE CLINICAL PRACTICE AND THERAPEUTICS**  
 Reporting of key design choices and codes used to identify the study population as a necessary component of reproducibility of healthcare database studies. Barriers to reproducibility of healthcare database studies. Barriers to reproducibility of healthcare database studies. Barriers to reproducibility of healthcare database studies.

**WHAT IS THE CURRENT KNOWLEDGE ON THE TOPIC?**  
 Concerns about reproducibility of biomedical science have moved funding agencies, professional research societies, and journal editors to encourage the transparency of the research process in preclinical, clinical, and population health sciences.<sup>1-3</sup> Transparency and reproducibility are intertwined concepts. There is general agreement that transparency can be achieved through a series of such measures as (1) registration of study protocols before the initiation of research to increase the chance that all study results will become publicly available, (2) reporting guidelines to encourage complete disclosure of all data necessary to reproduce study findings and (3) making the study data available to other researchers to reproduce the study findings.<sup>4-7</sup>

Randomized clinical trials are at the forefront of activities to increase transparency and reproducibility; regulatory agencies and journal editors require the registration of clinical trial protocols,<sup>8</sup> and observational studies are increasingly encouraged to follow similar guidelines.<sup>9-11</sup> Randomized clinical trials have extensive guidelines and standards with regard to design, conduct, and reporting.<sup>12,13</sup> After the publication of pharmaceutical companies in the United States.

<sup>1</sup>Division of Pharmacoepidemiology and Pharmacometrics, Brigham Young University, Provo, Utah, USA; <sup>2</sup>Corporate Department Global Epidemiology, Marketing/Regulatory, High Point Pharmaceuticals, Inc., New York, USA; <sup>3</sup>Department of Epidemiology, University of North Carolina at Chapel Hill, Chapel Hill, North Carolina, USA; <sup>4</sup>Medical Research Service, Department of Veterans Affairs, Durham, North Carolina, USA; <sup>5</sup>Department of Biostatistics, University of North Carolina at Chapel Hill, Chapel Hill, North Carolina, USA; <sup>6</sup>Department of Biostatistics, University of North Carolina at Chapel Hill, Chapel Hill, North Carolina, USA; <sup>7</sup>Department of Biostatistics, University of North Carolina at Chapel Hill, Chapel Hill, North Carolina, USA; <sup>8</sup>Department of Biostatistics, University of North Carolina at Chapel Hill, Chapel Hill, North Carolina, USA; <sup>9</sup>Department of Biostatistics, University of North Carolina at Chapel Hill, Chapel Hill, North Carolina, USA; <sup>10</sup>Department of Biostatistics, University of North Carolina at Chapel Hill, Chapel Hill, North Carolina, USA; <sup>11</sup>Department of Biostatistics, University of North Carolina at Chapel Hill, Chapel Hill, North Carolina, USA; <sup>12</sup>Department of Biostatistics, University of North Carolina at Chapel Hill, Chapel Hill, North Carolina, USA; <sup>13</sup>Department of Biostatistics, University of North Carolina at Chapel Hill, Chapel Hill, North Carolina, USA; <sup>14</sup>Department of Biostatistics, University of North Carolina at Chapel Hill, Chapel Hill, North Carolina, USA; <sup>15</sup>Department of Biostatistics, University of North Carolina at Chapel Hill, Chapel Hill, North Carolina, USA

Received 25 September 2016; accepted 4 December 2016; published online 11 March 2017  
 DOI: 10.1002/cpt.1279

Wang et al. CP&T 2016

## What do we need?

|  |   |
|--|---|
| <p>Sharing Data</p>  | <p>Would allow exact reproduction<br/>                 However:<br/> <b>Data use agreements usually do not allow sharing HIPAA-limited data with third parties</b></p>  |
| <p>Sharing programming code</p>                                    | <p>Demonstrates good will<br/>                 However:<br/> <b>It is almost impossible for a third party to assess whether a study was implemented as intended</b></p> |
| <p>Sharing all study implementation parameters and definitions</p> | <p><b>Provides clarity on what was actually done and enables reproduction with confidence</b></p>   |

## What do we need?

|   |  |
|---|--|
| Sharing Data  | Would allow exact reproduction<br>However:<br><b>Data use agreements usually do not allow sharing HIPAA-limited data with third parties</b>  |
| Sharing programming code                                    | Demonstrates good will<br>However:<br><b>It is almost impossible for a third party to assess whether a study was implemented as intended</b> |
| Sharing all study implementation parameters and definitions | <b>Provides clarity on what was actually done and enables reproduction with confidence</b>   |

## Why are current guidelines insufficient?

Current guidelines are helpful but not on a level of detail that will allow reproducibility of findings

Reproducibility is the foundation of scientific discovery through confirmation and refutation

An inability to reproduce findings will reduce confidence by decision makers in RWD findings

The image shows three overlapping document covers:

- Left cover:** PHARMACOEPIDEMIOLOGY AND DRUG SAFETY 2008; 17: 200-201. Published online 17 September 2007 in Wiley InterScience (www.interscience.wiley.com). ISPE COMMENTARY. Guidelines for good pharmacoepidemiological practices (GPP)<sup>1</sup>
- Middle cover:** EUROPEAN MEDICINES AGENCY SCIENCE. MEDICINES. HEALTH. 15 June 2013. The European Network of Centres for Pharmacoepidemiology and Pharmacovigilance (ENCePP). Guide on Methodological Standards in Pharmacoepidemiology (Revision 2)
- Right cover:** Guidance for Industry and FDA Staff. Best Practices for Conducting and Reporting Pharmacoepidemiologic Safety Studies Using Electronic Healthcare Data

VALUE IN HEALTH 20 (2017) 1003-1008

ELSEVIER

Transparency of study processes

Original Report

Good Practices for Real-World Data Studies of Treatment and/or Comparative Effectiveness: ISPOR-ISPE Special Task Force Report on Care Decision Making

PDS Pharmacoeconomics & Drug Safety

Official Journal of the International Society for Pharmacoeconomics

ORIGINAL REPORT

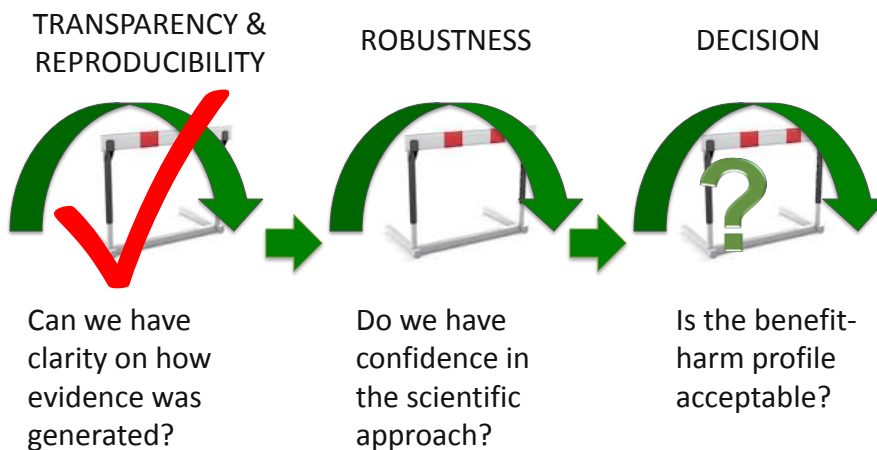
Marc L. Berger<sup>1,\*</sup>, Harold Sox<sup>2</sup>, Richa David Madigan<sup>3</sup>, Amr Makady<sup>4</sup>, Sel John Watkins<sup>5</sup>, C. Daniel Mullins<sup>11</sup>

Reporting to Improve Reproducibility and Facilitate Validity Assessment for Healthcare Database Studies V1.0

Shirley V. Wang<sup>1,2</sup> | Seon-Young Park<sup>3</sup> | Jeffrey Brown<sup>4</sup> | Frank de Vries<sup>5</sup> | Ian Douglas<sup>6</sup> | Olaf Klungel<sup>8</sup> | C. Daniel Mullins<sup>9</sup> | Michaela L. Williams<sup>10</sup> | Miriam Sturkenboom<sup>12</sup> | Evidence in Health Care on behalf of the joint ISPOR-ISPE Task Force on Reporting to Improve Reproducibility and Facilitate Validity Assessment for Healthcare Database Studies

Transparency of study implementation

## Regulatory decision making with RWE



## FRAMING THE PROBLEM & PRESENTATION OF RECOMMENDATIONS

### *Reproducibility Issues*



**Sebastian Schneeweiss, MD, ScD, FISPE**  
Harvard Medical School  
Boston, MA, USA

## FRAMING THE PROBLEM & PRESENTATION OF RECOMMENDATIONS

### *Transparency Recommendations*



**C. Daniel Mullins, PhD**  
University of Maryland  
Baltimore, MD, USA

## ISPOR/ISPE Task Force Recommendations



### Original Report

### Good Practices for Real-World Data Studies of Treatment and/or Comparative Effectiveness: Recommendations from the Joint ISPOR-ISPE Special Task Force on Real-World Evidence in Health Care Decision Making



Marc L. Berger<sup>1\*</sup>, Harold Sox<sup>2</sup>, Richard J. Wilke<sup>3</sup>, Diana L. Brixner<sup>4</sup>, Hans-Georg Eichler<sup>5</sup>, Wim Goettsch<sup>6</sup>, David Madigan<sup>7</sup>, Amr Makady<sup>8</sup>, Sebastian Schneeweiss<sup>9</sup>, Rosanna Tarricone<sup>9</sup>, Shirley V. Wang<sup>8</sup>, John Watkins<sup>10</sup>, C. Daniel Mullins<sup>11</sup>

C. Daniel Mullins, PhD



## Categories of RWD Studies

- **Safety Studies**
  - Signal Detection
  - Signal Evaluation
- **Effectiveness Studies**
  - **Exploratory Study**
    - Typically does not hypothesize the presence of a specific treatment effect and/or its magnitude
    - Primarily serves as first step to learn about possible treatment effects
    - Less pre-planned and allows for process-adjustments as investigators gain knowledge of the data
  - **Hypothesis-Evaluating Treatment Effectiveness (HETE) Study**
    - Evaluates the presence or absence of a pre-specified treatment effect and/or its magnitude
    - Tests a specific hypothesis in a specific data set
    - In conjunction with other evidence, may lead to treatment recommendations

## RECOMMENDATION 1

---

A priori, determine and declare that study is a “HETE” or “exploratory” study

- Disclose the rationale for the research question and for the study hypothesis
- Study hypotheses may be derived from a variety of sources: an exploratory data analysis on other RWD sources, meta-analyses or reanalyses (possibly on sub-groups)
- If the source was an exploratory analysis of a real-world data set, it should be identified. The rationale for choosing the source of RWD for the HETE study should be described.

## RECOMMENDATION 2

---

Post a HETE study protocol and analysis plan on a public study registration site prior to conducting the study analysis.

- Publicly declare the “intent” of the study—exploratory or hypothesis evaluation—as well as basic information about the study.
- Registration in advance of beginning a study is a key step in reducing publication bias
- For transparency, posting of exploratory study protocols is strongly encouraged.
- Options include EU Post-authorisation Study Register, ClinicalTrials.Gov, and HSRProj
  - None of these options may be ideal

## RECOMMENDATION 3

---

Publish HETE study results with attestation to conformance and/ or deviation from original analysis plan.

- Full and complete reporting of HETE studies is an important step toward earning the confidence of decision makers.
- Publish HETE study results, together with the study protocol
  - Any publication must attest to any deviation from study protocol or the original data analysis plan, detailing the modified elements as they appeared in the original protocol and the final protocol.
  - Reporting Guidelines
    - Companion ISPE – ISPOR Task Force Report (Wang et al)
    - RECORD/STROBE statements reporting guidelines for observational studies
    - SPIRIT recommendations for the content of a clinical trial protocol

## RECOMMENDATION 4

---

Enable opportunities for replication of HETE studies whenever feasible (ie, for other researchers to be able to reproduce the same findings using the same data set and analytic approach).

- Full transparency in design and operational parameters, data sharing, and open access in clinical research will not only increase confidence in the results but will also foster the reuse of clinical data (dependent on governance rules regarding data sharing)

## RECOMMENDATION 5

---

Perform HETE studies on a different data source and population than the one used to generate the hypotheses to be tested, unless it is not feasible.

- Good practice generally requires that a HETE study must analyze a different data source and population; otherwise, the HETE analysis risks replicating a finding that is specific to a given data source or population.
- There are situations when replication in another data source is for practical reasons impossible.
- There are other situations where using the same data set may be appropriate. If the study hypothesis is sufficiently sharpened on the basis of the signal from an analysis of a subsample of a data set used for an exploratory study and there are no other available data sets, then the same data source may be considered for hypothesis evaluation.

## RECOMMENDATION 6

---

Authors of the original study should work to publicly address methodological criticisms of their study once it is published.

- Public discussion of disagreements regarding methodology is important to both the credibility of RWD studies and to advancing the field of observational research.
- Authors may want to collaborate on reanalysis with colleagues raising the criticism, while in other cases they may make needed information/data available to facilitate reanalysis.
- Publishing or posting on a public website criticisms and responses or reanalyses based on these comments would be useful.



## RECOMMENDATION 7

---

Include key stakeholders (eg, patients, caregivers, clinicians, clinical administrators, HTA/payers, regulators, and manufacturers) in designing, conducting, and disseminating the research.

- Participation of stakeholders in research is evolving, and best practices are still emerging.
- Be clear about the intent of stakeholder engagement, particularly for RWD studies. The specific consultative needs will depend on the intended use of the study, end points involved, novelty of the approach, perceived reliability of the data, and other factors.
- The experience at the Patient-Centered Outcomes Research Institute is a useful benchmark.

## FRAMING THE PROBLEM & PRESENTATION OF RECOMMENDATIONS

---

### *Transparency Recommendations*



**C. Daniel Mullins, PhD**  
University of Maryland  
Baltimore, MD, USA

# FRAMING THE PROBLEM & PRESENTATION OF RECOMMENDATIONS

## *Reproducibility Recommendations*



**Shirley Wang, PhD, MSc**  
Harvard Medical School  
Boston, MA, USA

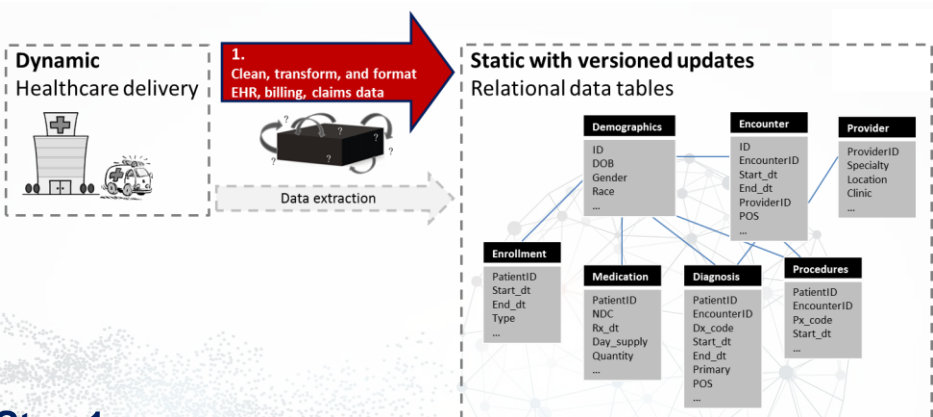
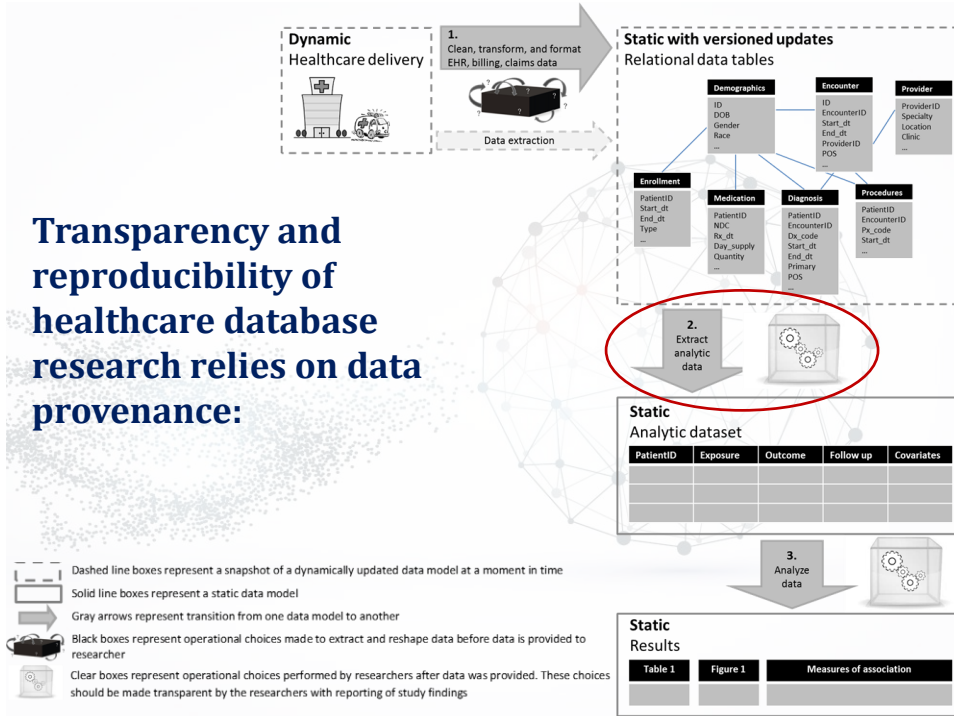
## ISPOR/ISPE Summit on **Real-World Evidence in Health Care Decision Making**



Recommendations – Reproducibility  
Shirley V Wang

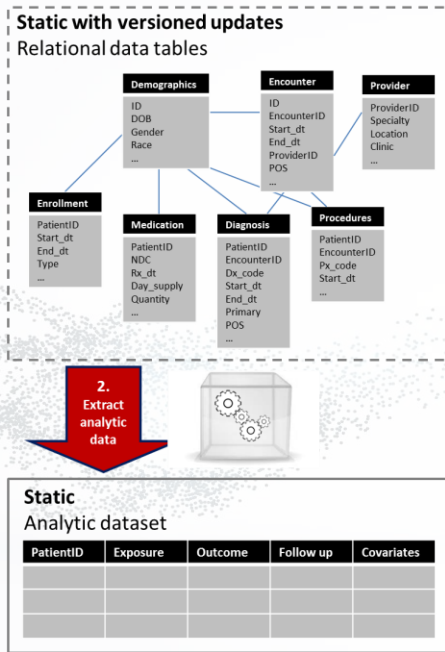


# Transparency and reproducibility of healthcare database research relies on data provenance:



## Step 1 Source Data Preparation and Pre-processing

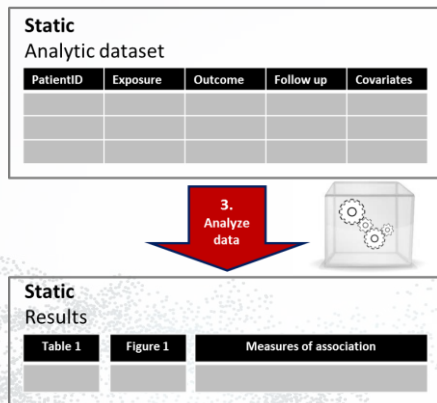
- Data cut (timing and version)
- Data cleaning (project specific vs global decisions?)
- Data model (transformations, algorithms)



## Step 2 Parameters for creation of study population

Comprehensive catalogue with 9 sections:

- A. Data source
- B. Design diagram
- C. Inclusion/exclusion criteria (attrition table)
- D. Exposure definition
- E. Follow up definition
- F. Outcome definition
- G. Covariates
- H. Control sampling
- I. Software

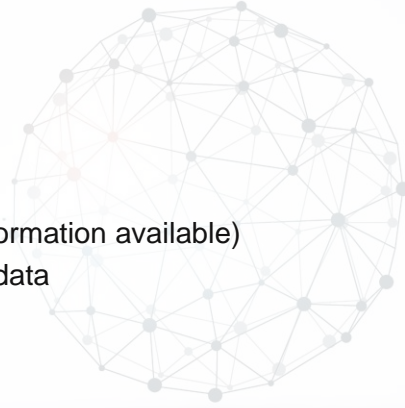


## Step 3 Methods for data analysis and reporting results

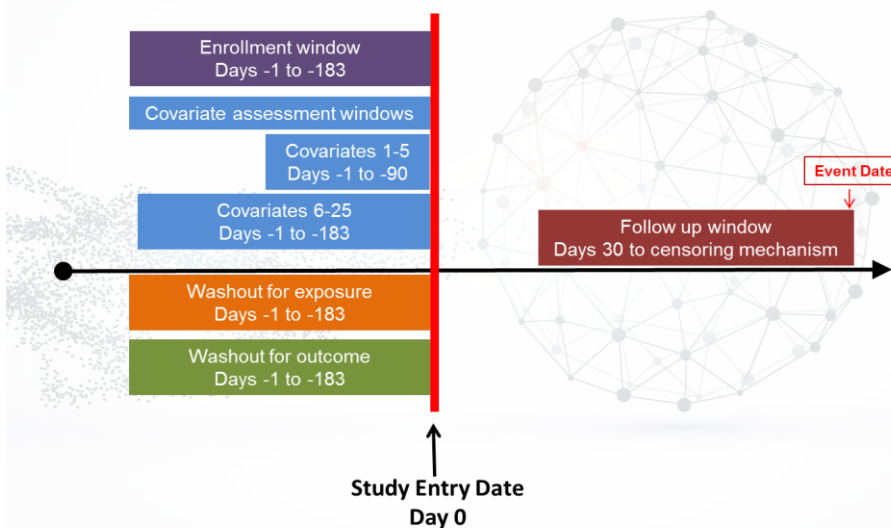
- Descriptive characteristics (pre and post adjustment)
- Measures of occurrence (risk, rate)
- Measures of association (RD, RR, HR)
- Confidence intervals
- Estimand (ATE, ATT)
- Methods for adjustment, diagnostics (e.g. balance)

## A. Data Source

- Data provider
- Data extraction date (DED)
- Data sampling
- Source data range (SDR)
- Type of data (domains of information available)
- Data linkage, supplemental data
- Data cleaning
- Data model conversion



## B. Design diagram

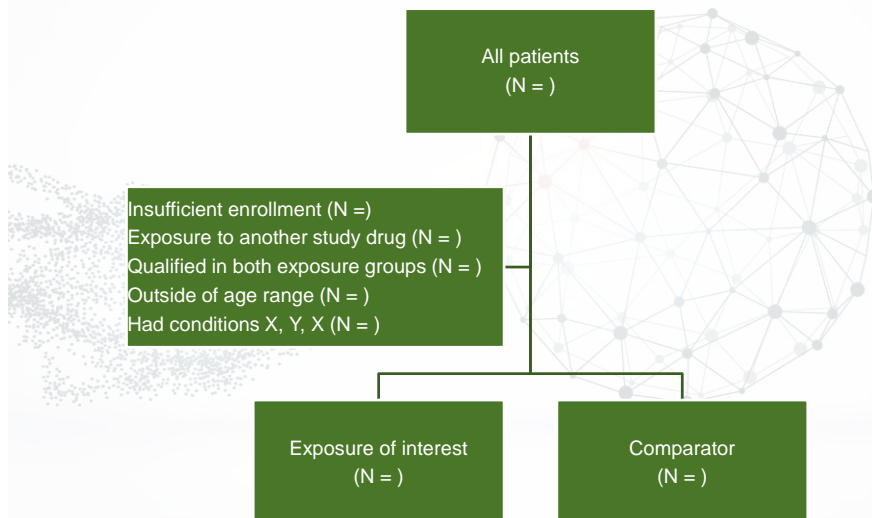


## C. Inclusion/exclusion (attrition table)

- Study entry date
- Person or episode level entry
- Sequencing of exclusions
- Enrollment window
- Enrollment gap
- Window for assessing inclusion/exclusion criteria
- Code algorithms
  - Frequency and temporality
  - Diagnosis position
  - Care setting
- Washout for exposure
- Washout for outcome

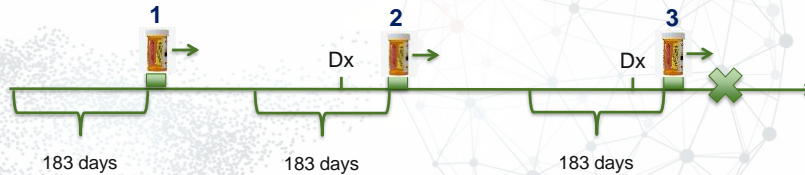


## Attrition table showing how the study population was derived



## Example specificity in reporting (Step 2)

- Study entry date is first dispensation of metformin after 183 days washout. Patients must have diabetes defined by ICD9 codes 250.\* recorded in any care setting and any diagnosis position within 183 days prior to but not including study entry date.

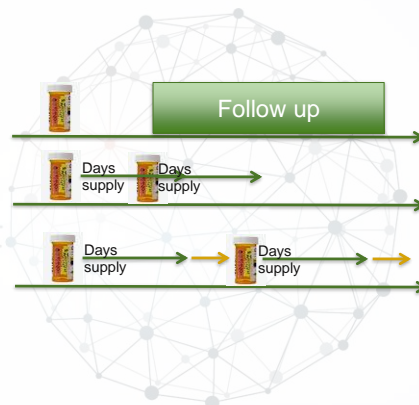


### What is the study entry date?

- Consider first new initiation date (1)
  - Patient does not contribute
- Consider all new initiation dates (1,2,3), use first that meets inclusion/exclusion
  - Patient contributes (2)
- Consider all new initiation dates (1,2,3), use all that meet inclusion/exclusion
  - Patient contributes (2, 3)

## D. Exposure definition

- Type of exposure
- Exposure risk window
- Induction period
- Stockpiling
- Bridging exposure episodes
- Exposure extension
- Switching/add on
- Codes
  - Frequency and temporality
  - Diagnosis position
  - Care setting



## E. Follow up time

- Follow up window
- Censoring criteria

## F. Outcome definition

- Event date
- Codes
  - Frequency and temporality
  - Diagnosis position
  - Care setting
- Validation



## G. Covariate definition

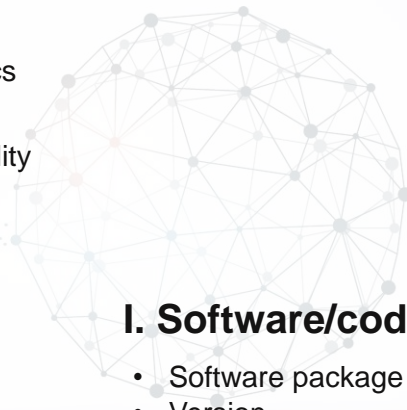
- Covariate assessment window
- Comorbidity/risk score
- Healthcare utilization metrics
- Codes
  - Frequency and temporality
  - Diagnosis position
  - Care setting

## H. Control sampling

- Sampling strategy
- Matching factors
- Matching ratio (fixed, variable)

## I. Software/code

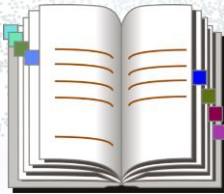
- Software package
- Version
- Analytic procedures
- Code





## Summary

- Comprehensive catalogue of **specific operational parameters** representing scientific decisions that define a study population
  - Reporting these will facilitate replicability and validity assessment
  - Expect catalogue will grow and change over time



Consensus - limited number of parameters are absolutely necessary to recreate a study population

**Which?** Debatable.



## Next steps

Transparency  
Reproducibility  
Assessment of validity

Investigator burden  
Reviewer burden  
Information overload



- **Empirical evaluation** of frequency of reporting, impact of transparency on specific study parameters (REPEAT Initiative)
  - *Inform policies/standards/guidelines* on reporting for database studies
  - Parameters infrequently reported with demonstrable↑ influence on replicability or robustness could be prioritized
- **Shared terminology and structured reporting templates**
  - Simplify reporting - terminology used for the same concepts varies
  - Reporting of attrition tables (ordering of exclusion, clarity)
  - Visualization of study design implementation
- **Reporting on research using unstructured data**
  - Clarity in how ground truth/gold standard is defined
  - Scientific decisions/parameter tuning for NLP, machine learning algorithms
- ...

## FRAMING THE PROBLEM & PRESENTATION OF RECOMMENDATIONS

### *Reproducibility Recommendations*



**Shirley Wang, PhD, MSc**  
Harvard Medical School  
Boston, MA, USA

## FRAMING THE PROBLEM & PRESENTATION OF RECOMMENDATIONS

### *Transparency Issues*



**Marc Berger, MD**  
Pfizer, New York,  
NY, USA

### *Reproducibility Issues*



**Sebastian Schneeweiss,  
MD, ScD, FISPE**  
Harvard Medical School,  
Boston, MA, USA

### *Transparency Recommendations*



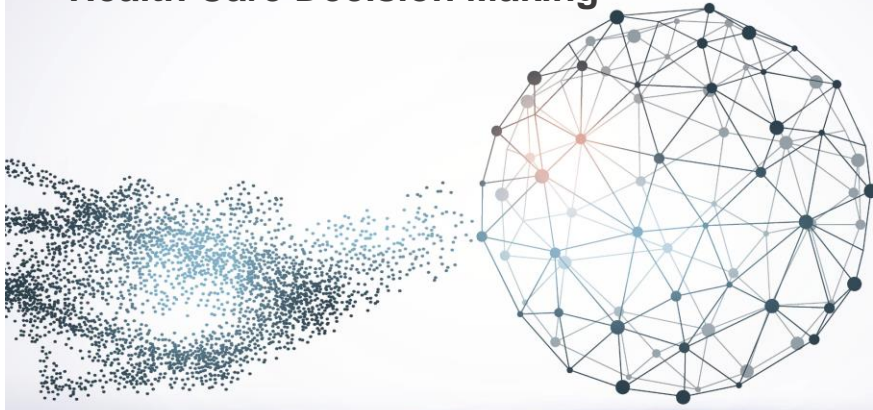
**C. Daniel Mullins, PhD**  
University of Maryland,  
Baltimore, MD, USA

### *Reproducibility Recommendations*



**Shirley Wang, PhD, MSc**  
Harvard Medical School,  
Boston, MA, USA

ISPOR / ISPE Summit on  
**Real-World Evidence in  
Health Care Decision Making**



BREAK



ISPOR / ISPE Summit on  
**Real-World Evidence in  
Health Care Decision Making**



REGULATORY/HTA REACTIONS



## REGULATORY/HTA REACTIONS



**Richard Willke, PhD**  
ISPOR  
Lawrenceville, NJ, USA

## REGULATORY/HTA REACTIONS

*US Regulatory*



**Jacqueline Corrigan-Curay, MD**  
US Food and Drug Administration,  
Washington, DC, USA

*US Regulatory*



**Robert Ball, MD, MPH, ScM**  
CDER, US Food and Drug  
Administration, Washington,  
DC, USA

*EUnetHTA*



**Wim Goettsch, PhD**  
EuNetHTA JA3, Diemen,  
The Netherlands

*US Payer*



**Laura Happe, PharmD, MPH**  
Humana, Louisville, KY, USA

## REGULATORY/HTA REACTIONS



**Richard Willke, PhD**  
ISPOR  
Lawrenceville, NJ, USA

## REGULATORY/HTA REACTIONS

*US Regulatory*



**Jacqueline Corrigan-Curay, MD**  
US Food and Drug Administration  
Washington, DC, USA

# Real World Data Studies and Transparency

Jacqueline Corrigan-Curay, JD, MD  
Director  
Office of Medical Policy  
Center for Drug Evaluation and Research  
FDA  
October 20, 2017

## Disclosures

### **FINANCIAL DISCLOSURE:**

**No relevant financial relationship exists**

**The views expressed herein are those of the author and should not be construed as FDA's views or policies**

## CDER Definitions



- **Real-World Data (RWD)** are data relating to patient health status and/or the delivery of health care routinely collected from a variety of sources.
- **Real-World Evidence (RWE)** is the clinical evidence regarding the usage and potential benefits or risks of a medical product derived from analysis of RWD.

RWD include data derived from electronic health records (EHRs), claims and billing

RWE can be generated using many different study designs, including but not limited to, randomized trials, such as large simple trials, pragmatic clinical trials, and observational studies (prospective and/or retrospective ).

## FDA Experience with RWD/RWE



**425 million person years of observation time**  
**43 million people currently accruing new data**  
**5.9 billion pharmacy dispensings**  
**7.2 billion unique medical encounters**  
**42 million people with at least one laboratory test result**



### Network of Collaborators

Sentinel brings together public, academic and private organizations that provide access to healthcare data and expertise.



### Data at a Glance

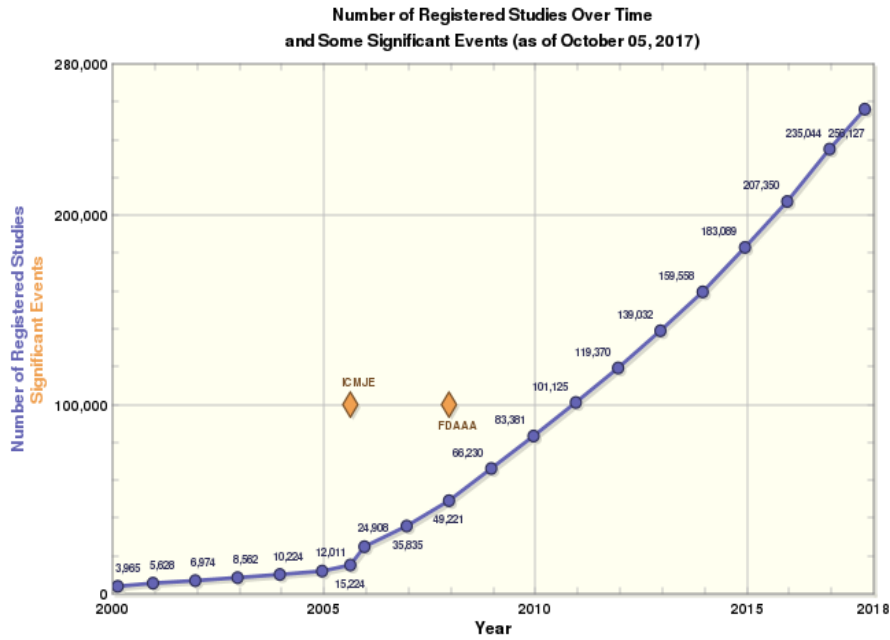
The Sentinel Distributed Database is comprised of quality-checked electronic data held by 18 partner organizations.



### Statistical Methods

Sentinel explores the application of a wide range of methods to enhance medical product safety assessment.

<https://www.sentinelinitiative.org/>



Source: <https://ClinicalTrials.gov>

## Bringing it All Together



Leveling the Playing Field

- RWD vs Non-RWD
- Frame the question as totality of evidence





## Questions/ Comments

[CDERMedicalPolicy-  
RealWorldEvidence@fda.hhs.gov](mailto:CDERMedicalPolicy-RealWorldEvidence@fda.hhs.gov)



## REGULATORY/HTA REACTIONS

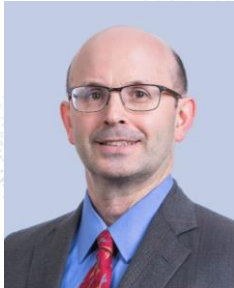
*US Regulatory*



**Jacqueline Corrigan-Curay, MD**  
US Food and Drug Administration  
Washington, DC, USA

## REGULATORY/HTA REACTIONS

*US Regulatory*



**Robert Ball, MD, MPH, ScM**  
CDER, US Food and Drug Administration  
Washington, DC, USA



# Comments on ISPE/ISPOR Real World Evidence Task Force Reports

Robert Ball, MD, MPH, ScM

Deputy Director

Office of Surveillance and Epidemiology

Center of Drug Evaluation and Research

October 20, 2017

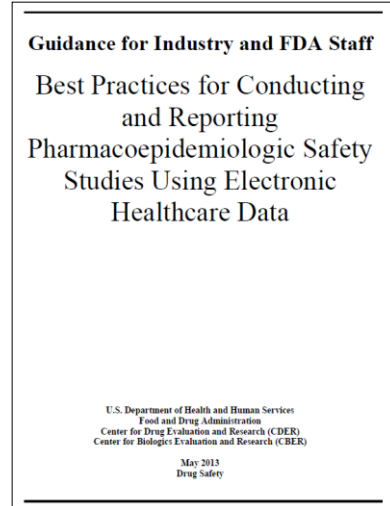


The views expressed are those of the speaker  
and do not necessarily reflect FDA policy



## Epidemiology – Final Guidance

- Pertains to pharmacoepidemiology safety studies using electronic healthcare data
- Final guidance was issued May 14, 2013



## Where might the ISPE/ISPOR reports fit in?



- Similarity in many concepts in the ISPE/ISPOR reports and the FDA guidance on Best Practices for pharmacoepidemiology safety studies using electronic healthcare data
  - Some key areas of similarity for the “Transparency” report
    - focus on hypothesis testing studies
    - need for protocol prior to start of the study
    - need to follow the protocol
  - The “Reproducibility” document is more detailed and uses different terminology in some instances, but is similar conceptually



## Lessons from the Sentinel System

- Sentinel is specifically mentioned in the “Reproducibility” document:
  - “Sentinel has committed itself to transparency through online posting of study protocols, final reports, and study specifications, including temporal anchors, how data are processed into a common data model, and study design details.”
- FDA remains committed to improving the transparency of and access to the Sentinel System



## Lessons from the Sentinel System

- FDA and partners have successfully implemented the Sentinel System to meet the requirements for an **Active Post-market Risk Identification and Analysis (ARIA)** system required by FDA Amendments Act of 2007
  - Reusable tools, high quality data, validation of key data elements, and assessment of “sufficiency”
- What is ARIA Sufficiency?
  - **Adequate data**
  - **Appropriate methods**
  - **To answer the question of interest**
  - **At satisfactory level of precision**

## Where might the ISPE/ISPOR reports fit in?



- Question of Interest
  - 21<sup>st</sup> Century Cures Act - “The Secretary shall establish a program to evaluate the potential use of real world evidence (1) to help to support the approval of a new indication for a drug approved under section 505(c); and (2) to help to support or satisfy postapproval study requirements”
- Can we identify the specific questions, data characteristics, study design attributes, and analysis methods for healthcare database studies of drug effectiveness that we can trust to provide valid and reproducible results?
  - This effort would be assisted if the ISPE/ISPOR report recommendations were followed generally, because there would be an improved empirical basis for understanding “what works”



Thank you



## REGULATORY/HTA REACTIONS

*US Regulatory*



**Robert Ball, MD, MPH, ScM**  
CDER, US Food and Drug Administration  
Washington, DC, USA

## REGULATORY/HTA REACTIONS

*EUnetHTA*



**Wim Goettsch, PhD**  
EuNetHTA JA3  
Diemen, The Netherlands

ISPOR / ISPE Summit on  
**Real-World Data (RWD) in  
 HTA. The EUnetHTA example**



Wim Goettsch  
 Director EUnetHTA JA3 Directorate  
 ZIN, The Netherlands

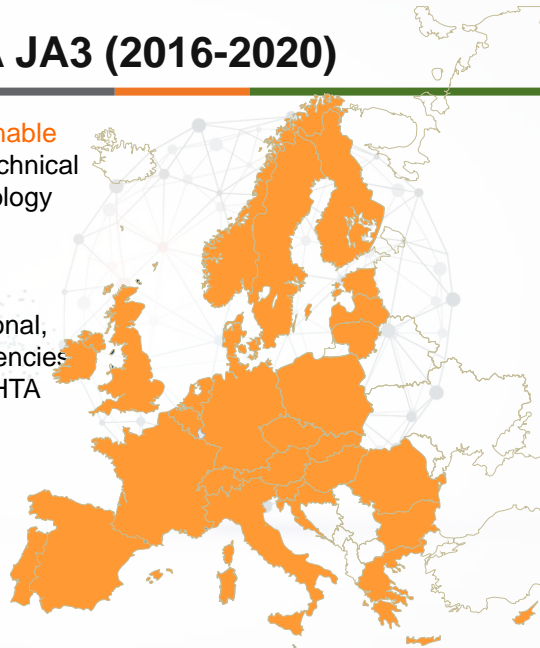


## EUnetHTA JA3 (2016-2020)

Aims to contribute to a **sustainable model** for the scientific and technical cooperation on Health Technology Assessment (HTA) in Europe

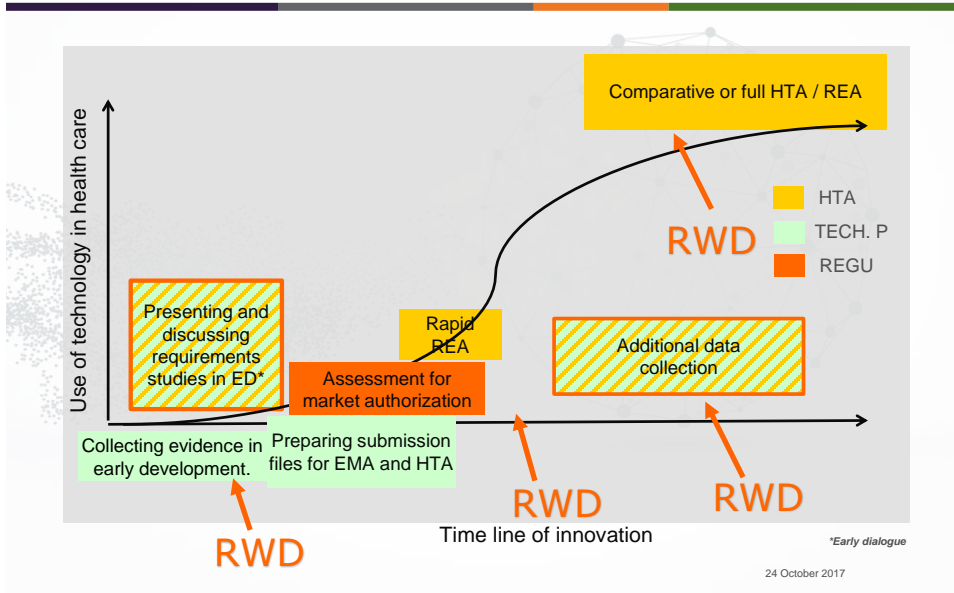
**81** partners consisting of national, regional and non-for-profit agencies that produce or contribute to HTA

**Project Coordinator:**  
 Dutch National Health Care  
 Institute (ZIN)

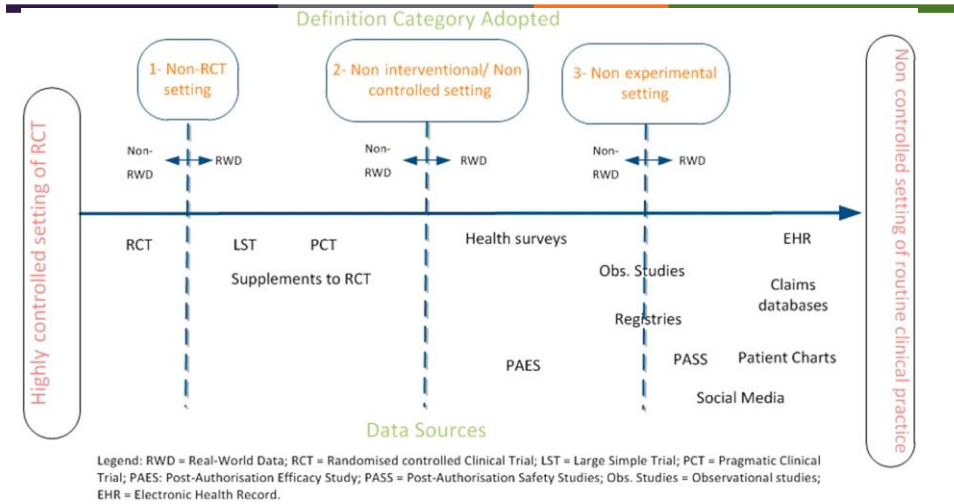




## RWD in the life cycle of technologies



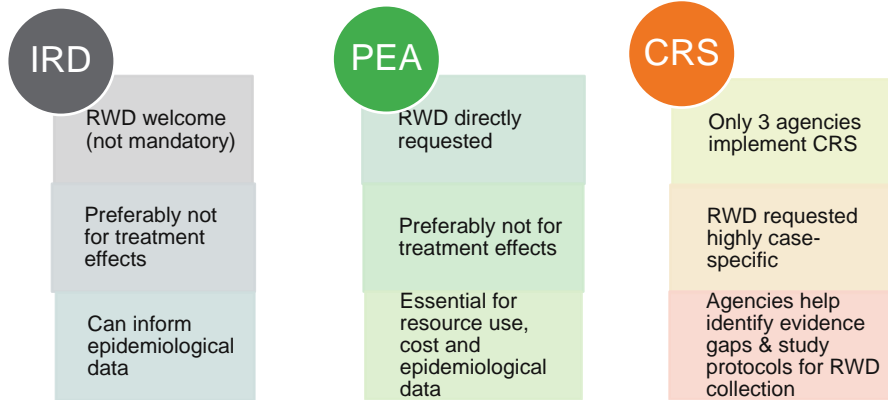
## Definition of RWD



Makady A, de Boer A, Hillege H, Klungel OH, Goettisch WG. What Is Real-World Data (RWD)? A Review of Definitions Based on Literature and Stakeholder Interviews. Value in Health 2017; in press



## HTA policies on RWD



Makady A, ten Ham R, de Boer A, Hillege H, Klungel OH, Goettsch WG. Policies for Use of Real-World Data in Health Technology Assessment (HTA): A Comparative Study of Six HTA Agencies. *Value in Health* 2017; 20: 520-5323



## Conclusions

- **Real World Data will become important over the life-cycle**
  - Should we remain to use the term RWD?
  - More clarity and insight on the use of RWD in HTA practice is necessary
  - Access issues remain important
  - What can we do in working together?
  
- **Quality of RWD remains a crucial issue**
  - Transparent reporting of RWD data studies
  - Guidelines for interpretation of RWD should be implemented
  - Acceptability of RWD for decision-making needs more interaction with the final decision-makers

## REGULATORY/HTA REACTIONS

*EU*netHTA



**Wim Goettsch, PhD**  
EuNetHTA JA3  
Diemen, The Netherlands

## REGULATORY/HTA REACTIONS

*US* Payer



**Laura Happe, PharmD, MPH**  
Humana  
Louisville, KY, USA

# REGULATORY/HTA REACTIONS

*US Regulatory*



**Jacqueline Corrigan-Curay, MD**  
US Food and Drug Administration,  
Washington, DC, USA

*US Regulatory*



**Robert Ball, MD, MPH, ScM**  
CDER, US Food and Drug  
Administration, Washington,  
DC, USA

*EUnetHTA*



**Wim Goetsch, PhD**  
EuNetHTA JA3, Diemen,  
The Netherlands

*US Payer*



**Laura Happe, PharmD, MPH**  
Humana, Louisville, KY, USA

## ISPOR/ISPE Summit on Real-World Evidence in Health Care Decision Making



LUNCH



## Afternoon Session Welcome



**Tobias Gerhard, PhD, FISPE, (ISPE)E**  
Rutgers University  
New Brunswick, NJ, USA

### ISPOR/ISPE Summit on **Real-World Evidence in Health Care Decision Making**



OTHER KEY STAKEHOLDER PERSPECTIVES



## OTHER KEY STAKEHOLDER PERSPECTIVES



**Patient Representative**



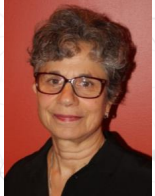
**Tobias Gerhard, PhD, FISPE, (ISPE)**  
Rutgers University, New Brunswick, NJ, USA

**Patient Representative**



**Eric Gascho**  
National Health Council, Washington, DC, USA

**Registry Representative**



**Deborah Zarin, MD**  
National Institutes of Health, Bethesda, MD, USA

**Industry Representative**



**Cathy Critchlow, PhD**  
Amgen, Thousand Oaks, CA, USA

## OTHER KEY STAKEHOLDER PERSPECTIVES



**Patient Representative**



**Eric Gascho**  
National Health Council  
Washington, DC, USA



# The Patient Perspective on Real-World Evidence

Eric Gascho  
ISPOR/ISPE Summit on  
Real-World Evidence in Health Care Decision Making  
October 20, 2017



## The Patient Perspective on Real-World Evidence

- Qualitative research (September 2016 & June 2017)
- Multi-stakeholder Roundtable (July 31, 2017)
- White Paper (September 2017)
  1. Definition and Uses
  2. Understanding and Trust
  3. Skill Sets and Tools Needed

© National Health Council



**Patient Perspectives on Real-World Evidence:**  
A Roundtable to Gather Views, Needs,  
and Recommendations



1730 M Street NW, Suite 500  
Washington, DC 20036  
202-785-3910  
www.nationalhealthcouncil.org

## Three Key Findings Related to the ISPOR/ISPE Papers

1. The patient community has little understanding of RWE or that controversies exist
2. Patient groups act as arbiters of evidence quality, and influence trust in the evidence
3. Need for patient-organization education programs/materials on RWE uses, sources, and key issues

© National Health Council



## Key Findings: Questions that Aid in Patient Understanding and Trust of RWE

1. Who or what group conducted the study? Was it co-developed with patients?
2. What is the purpose/objective of the study? Does it have pre-specified study aims?
3. What are the key findings and how are they meaningful to patients?
4. Who owns (or holds) the data?
5. How many people were included? What were their characteristics?
6. Over what time period did the study take place?
7. Did the methods align with question/objective?
8. Who interpreted the study? What are their qualifications?
9. Who is the evidence most likely to interest or benefit?
10. How are the findings actionable for patients and clinicians?
11. How does the study fit into the larger realm of science on this topic??
12. How is this a novel finding, or how does it replicate or refute past work?
13. How does it deal with the reality that, for some treatments, there is no clear consensus?
14. What are the identified limitations, including barriers/challenges, especially for patients?

© National Health Council

## Recommendations for good procedural practices for HETE Studies

“Include key stakeholders (patients, caregivers, clinicians, clinical administrators, HTA/payers, regulators, manufacturers) in designing, conducting, and disseminating HETE studies.”

© National Health Council

Available online at [www.sciencedirect.com](http://www.sciencedirect.com)  
**ScienceDirect**  
 journal homepage: [www.elsevier.com/locate/jval](http://www.elsevier.com/locate/jval)

**Original Report**

**Good Practices for Real-World Data Studies of Treatment and/or Comparative Effectiveness: Recommendations from the Joint ISPOR-ISPE Special Task Force on Real-World Evidence in Health Care Decision Making**

Marc L. Berger<sup>a,\*</sup>, Harold Sox<sup>b</sup>, Richard J. Wilke<sup>c</sup>, Diana L. Brimer<sup>d</sup>, Hans-Georg Eichler<sup>e</sup>, Wim Goetsch<sup>f</sup>, David Madigan<sup>g</sup>, Amir Mahabadi<sup>h</sup>, Sebastian Schneeweis<sup>i</sup>, Rosanna Tarricone<sup>j</sup>, Shirley V. Wang<sup>k</sup>, John Workalembo<sup>l</sup>, C. Daniel Mallin<sup>m</sup>

<sup>a</sup>New York City, NY, USA, <sup>b</sup>Center for Outcomes Research Institute, Washington, DC, USA, <sup>c</sup>International Society for Pharmacoeconomics and Outcomes Research, Laramie, WY, USA, <sup>d</sup>University of Utah, Salt Lake City, UT, USA, <sup>e</sup>European Medicines Agency, London, UK, <sup>f</sup>Erasmus Medical Center and University of Utrecht, Utrecht, The Netherlands, <sup>g</sup>Columbia University, New York City, NY, USA, <sup>h</sup>Brigham and Women's Hospital, Harvard Medical School, Boston, MA, USA, <sup>i</sup>Bocconi University, Milan, Italy, <sup>j</sup>Premier Blue Cross, Mountlake Terrace, WA, USA, <sup>k</sup>University of Maryland, Baltimore, MD, USA

**ABSTRACT**


**Purpose:** Real-world evidence (RWE) includes data from retrospective or prospective observational studies and observational registries and provides insights beyond those addressed by randomized controlled trials. RWE studies aim to improve health care decision making. **Methods:** The International Society for Pharmacoeconomics and Outcomes Research (ISPOR) and the International Society for Pharmacoeconomics and Outcomes Research (ISPE) created a task force to make recommendations regarding good procedural practices that would enhance decision makers' confidence in evidence derived from RWE studies. Peer review by ISPOR/ISPE members and task force participants provided a consensus-building iterative process for the topics and framing of recommendations. **Results:** The ISPOR/ISPE Task Force recommendations cover seven topics such as study registration, replicability, and stakeholder involvement in RWE studies. These recommendations, in concert with earlier recommendations about study methodology, provide a trustworthy foundation for the expanded use of RWE in health care decision making. **Conclusion:** The focus of these recommendations is good procedural practices for studies that test a specific hypothesis in a specific population. We recognize that some of the recommendations in this report may not be widely adopted without appropriate exceptions from decision makers, journal editors, and other key stakeholders. **Keywords:** comparative effectiveness, decision making, guidelines, pharmacoeconomics, real-world data, treatment effectiveness

© 2017 Published by Elsevier Inc. on behalf of International Society for Pharmacoeconomics and Outcomes Research (ISPOR).

## Transparency

“Clear natural language description of key operational and design details should be the basis for sharing the scientific thought process with the majority of informed consumers of evidence.”

© National Health Council



Available online at [www.sciencedirect.com](http://www.sciencedirect.com)  
**ScienceDirect**  
 journal homepage: [www.elsevier.com/locate/yval](http://www.elsevier.com/locate/yval)

**Original Report**  
**Reporting to Improve Reproducibility and Facilitate Validity Assessment for Healthcare Database Studies V1.0**

Shirley V. Wang<sup>a,\*</sup>, Sebastian Schoenwaelder<sup>a</sup>, Marc L. Berger<sup>b</sup>, Jeffrey Braun<sup>c</sup>, Frank de Vries<sup>d</sup>, Jim Douglas<sup>e</sup>, Joshua J. Gagne<sup>f</sup>, Bruce Gini<sup>g</sup>, Chad Klung<sup>h</sup>, C. Daniel Mullins<sup>i</sup>, Michael D. Nguyen<sup>j</sup>, Jeremy A. Razem<sup>k</sup>, Liam Smeeth<sup>l</sup>, Miriam Starckenboom<sup>m</sup>, on behalf of the joint ISPE-ISPOR Special Task Force on Real World Evidence in Health Care Decision Making

<sup>a</sup>Division of Pharmacoeconomics and Pharmacometrics, Brigham and Women's Hospital, MA, USA, <sup>b</sup>Department of Medicine, Harvard Medical School, MA, USA, <sup>c</sup>Pharm, NY, USA, <sup>d</sup>Department of Population Medicine, Harvard Medical School, MA, USA, <sup>e</sup>Department of Clinical Pharmacy, Maastricht UMC, The Netherlands, <sup>f</sup>London School of Hygiene and Tropical Medicine, England, UK, <sup>g</sup>Agencia reguladora de servicios sanitarios, Florence, Italy, <sup>h</sup>Division of Pharmacoeconomics & Clinical Pharmacology, Utrecht University, Utrecht, Netherlands, <sup>i</sup>Pharmaceutical Health Services Research Department, University of Maryland School of Pharmacy, MA, USA, <sup>j</sup>TDK Center for Drug Evaluation and Research, USA, <sup>k</sup>Amcor, Inc., NY, USA, <sup>l</sup>Drexel University Medical Center Philadelphia, Netherlands

**ABSTRACT**

**Purpose:** Defining a study population and creating an analytic dataset from longitudinal healthcare databases involves many decisions. Our objective was to catalogue scientific decisions underpinning study execution that should be reported to facilitate replication and enable assessment of validity of studies conducted in large healthcare databases. **Methods:** We reviewed key investigator decisions required to operate a sample of macros and software tools designed to create and analyze analytic cohorts from longitudinal streams of healthcare data. A panel of academic, regulatory, and industry experts in healthcare database analytics discussed and added to this list. **Conclusion:** Differences generated from large healthcare encounters and reimbursement databases is increasingly being sought by decision-makers. Valid terminology is used across the world for the same concepts. Agreeing on terminology and which parameters from a large catalogue are the most essential to report for replicable research would improve transparency and facilitate assessment of validity. At a minimum, reporting for a database study should provide clarity regarding operational definitions for key temporal anchors and their relation to each other when creating the analytic dataset, accompanied by an attention table and a design diagram. A substantial improvement in reproducibility, rigor and confidence in real world evidence generated from healthcare databases could be achieved with greater transparency about operational study parameters used to create analytic datasets from longitudinal healthcare databases. **Keywords:** Transparency, reproducibility, replication, healthcare databases, pharmacoeconomics, methods, longitudinal data.

© 2017 Published by Elsevier Inc. on behalf of International Society for Pharmacoeconomics and Outcomes Research (ISPOR).

## Summary

- How can we operationalize these goals?
  - Engage patient advocates in true partnership
  - Begin engagement early and often
  - Provide rationale for decisions made
  - With input from the patient community, communicate with clear, natural language the patient community will understand

© National Health Council

# Thank you!

**NHC Contact:**

Eric Gascho

VP of Policy & Government Affairs

email: [egascho@nhcouncil.org](mailto:egascho@nhcouncil.org)



## OTHER KEY STAKEHOLDER PERSPECTIVES

*Patient Representative*



**Eric Gascho**  
National Health Council  
Washington, DC, USA

## OTHER KEY STAKEHOLDER PERSPECTIVES

### *Registry Representative*



**Deborah Zarin, MD**  
National Institutes of Health  
Bethesda, MD, USA

### ISPOR/ISPE Summit on **Real-World Evidence in Health Care Decision Making**



Deborah A. Zarin  
Director, ClinicalTrials.gov  
U.S. National Institute of Health



## ClinicalTrials.gov and Real-World Evidence

ISPOR/ISPE Summit on  
Real-World Evidence in  
Health Care Decision Making

October 20, 2017  
Washington, DC, USA



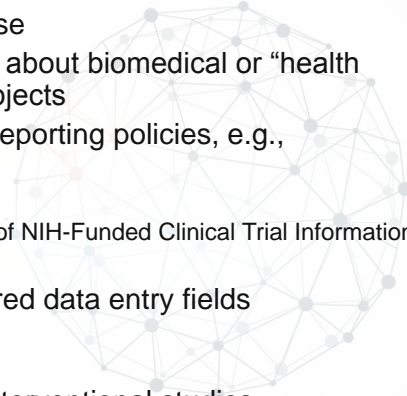
[ispor.org/RWEinHealthcareDecisions](http://ispor.org/RWEinHealthcareDecisions)



DILBERT © 2010 Scott Adams. Used By permission of ANDREWS MCMEEL SYNDICATION. All rights reserved.

## ClinicalTrials.gov

- Registry and Results Database
- Tool for providing information about biomedical or “health related” studies in human subjects
- Accommodates various trial reporting policies, e.g.,
  - ICMJE/WHO
  - FDAAA (42 CFR Part 11)
  - NIH Policy on the Dissemination of NIH-Funded Clinical Trial Information
  - PCORI
- ClinicalTrials.gov has structured data entry fields
  - Mandatory
  - Optional
- Includes observational and interventional studies
  - Almost all policies focus on interventional studies

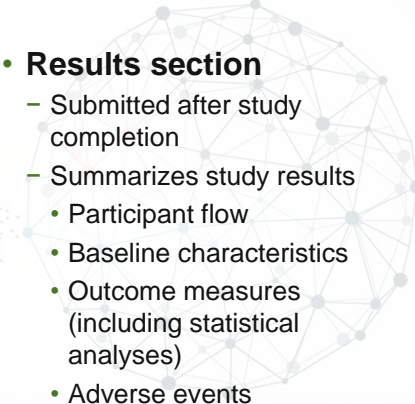


## ClinicalTrials.gov Overview (as of 5 Oct 2017)

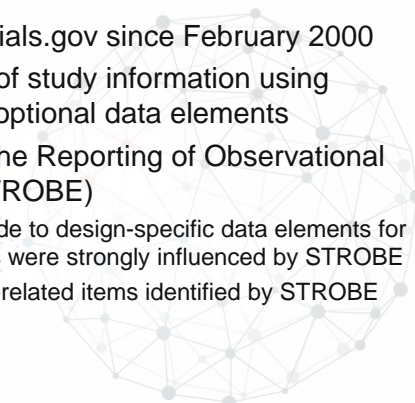
- Study registry includes:
  - 204,400 Interventional studies (clinical trials)
  - 50,500 Observational studies
    - 3,300 Patient registries
  - 400 Expanded access
- Results database includes:
  - 26,800 sets of results for clinical trials
  - 1,800 sets of results for observational studies

The screenshot shows the ClinicalTrials.gov homepage. At the top, there is a navigation menu with links for 'Find Studies', 'About Studies', 'Submit Studies', 'Resources', and 'About Site'. Below the menu, a blue banner states: 'ClinicalTrials.gov is a database of privately and publicly funded clinical studies conducted around the world.' To the right of the banner is a search bar with the following fields: 'Condition / Disease' (with the example 'e.g. breast cancer'), 'Other Terms' (with the example 'e.g. NCT number, drug name, investigator name'), and 'Country'. Below the search bar are buttons for 'Find a study to participate in', 'Search all studies', and 'Advanced Search'. Below the search bar, there are three main sections: 'Patients and Families', 'Researchers', and 'Study Section Managers'. At the bottom of the page, there is a footer with links for 'HOME', 'ABOUT US', 'CONTACT US', 'TERMS AND CONDITIONS', 'SUPPORT', and 'CUSTOMER SUPPORT'. The footer also includes copyright information: 'Copyright © 2017 U.S. National Library of Medicine. All rights reserved. U.S. National Library of Medicine, U.S. National Institutes of Health, U.S. Department of Health and Human Services'.

## Content of a Study Record (Minimum Information Requirements)

- 
- **Registration section**
    - Submitted at study initiation
    - Summarizes information from study protocol: e.g.,
      - Condition
      - Interventions
      - Study design
    - Includes enrollment information (e.g., eligibility, locations)
  - **Results section**
    - Submitted after study completion
    - Summarizes study results
      - Participant flow
      - Baseline characteristics
      - Outcome measures (including statistical analyses)
      - Adverse events
      - Protocol document

## Registration of Observational Studies

- 
- Accommodated at ClinicalTrials.gov since February 2000
  - Standardizes key attributes of study information using established mandatory and optional data elements
  - Informed by Strengthening the Reporting of Observational Studies in Epidemiology (STROBE)
    - October 2007: Modifications made to design-specific data elements for registering observational studies were strongly influenced by STROBE
    - September 2008: Added results-related items identified by STROBE

## Definition of Observational Study

- **Observational:** Studies in human beings in which biomedical and/or health outcomes are **assessed in pre-defined groups of individuals**. Participants in the study may receive diagnostic, therapeutic, or other interventions, but the investigator does not assign specific interventions to the study participants. This includes when participants receive interventions as part of routine medical care, and a researcher studies the effect of the intervention.

Versus:

- **Interventional** (clinical trial): Participants are **assigned prospectively to an intervention or interventions according to a protocol** to evaluate the effect of the intervention(s) on biomedical or other health related outcomes.

## Observational Study Design Data Elements

- **Observational Study Model\*** - Primary strategy for participant identification and follow-up (e.g., Cohort, Case-Control, Case-Only)
- **Time Perspective\*** - Temporal relationship of observation period to time of participant enrollment: e.g.,
  - Prospective: Look forward using periodic observations collected predominantly following subject enrollment
  - Cross-sectional: Observations or measurements made at a single point in time, usually at subject enrollment
  - Retrospective
- **Biospecimen Retention** - Indicate whether samples of material from research participants are retained in a biorepository (e.g., Samples with DNA, None Retained)
  - **Biospecimen Description** - Specify all types of biospecimens to be retained (e.g., whole blood, serum, white cells, urine, tissue).



## Registration of observational studies: Is it time?

Rebecca J. Williams PharmD MPH, Tony Tse PhD, William R. Harlan MD, Deborah A. Zarin MD

Previously published at [www.cmaj.ca](http://www.cmaj.ca)

Observational studies form an important part of the medical evidence base, particularly for assessing rare adverse events and long-term effectiveness of medications and devices.<sup>1</sup> However, observational studies, like interventional studies (clinical trials), are subject to publication bias and reporting bias.<sup>2,4</sup> Registration of clinical trials is a widely recognized tool for facilitating complete public reporting.<sup>5</sup> Registration of observational studies has received less attention, although interest is growing.<sup>6,8</sup> Because existing registries (e.g., ClinicalTrials.gov) accommodate observational studies, and the rationale and benefits of registration are similar, we ask the scientific community and other stakeholders to consider the systematic, prospective registration of observational studies.

### Why register observational studies?

Much of the rationale for the prospective registration of clinical trials<sup>6</sup> applies to the registration of observational studies (Table 1).<sup>7</sup> For example, observational studies in which researchers acquire data directly from human participants entail ethical obligations to participants, even though such

#### Key points

- Clinical trial registries are established tools for improving access to information on trials and for addressing publication bias and reporting bias.
- Much of the ethical and scientific rationale for registering clinical trials also applies to observational studies.
- The existing infrastructure for trial registration is being used for observational studies, which make up 17% of the studies registered in ClinicalTrials.gov.
- Further discussion is necessary to assess the scope and specific implementation-related issues of systematic registration of observational studies.

ies, a registry containing summary protocol information would allow researchers to track such studies from initiation to completion. Such a tool could be useful to researchers who are evaluating the current evidence, considering initiating similar studies, identifying gaps in research or seeking collaborators.<sup>15</sup> Similarly, a database of summary results could improve access to information about published and unpublished observational

## Reporting of Observational Studies

- ClinicalTrials.gov **works best** for reporting studies that use a collection of primary, prospective data in humans: e.g.,
  - Data collected prospectively from well-defined groups of individuals (e.g., exposed and non-exposed) according to a protocol
  - Prospective cohort studies were the most frequently registered in ClinicalTrials.gov (~half of all registered observational studies)

Source: Williams RJ et al. *CMAJ*. 2010;182(15):1638-42.

## Sample Registered RWE Study (NCT02607085)

- **Title:** REal World EVidence for TrEAtment of HyperkaLemia in Emergency Department (REVEAL-ED)
- **Sponsor:** ZS Pharma, Inc. (member of the AstraZeneca Group)
- **Purpose:** “This study evaluates the management of subjects with Standard of Care (SOC) when admitted to the Emergency Department (ED) with hyperkalemia (potassium value  $\geq 5.5$  mmol/L).”
- **Study Design:** Multicenter, Prospective, Observational Study
  - Observational Model: Case-Only
  - Enrollment: 203 participants

## Sample RWE Study (NCT02607085) - 2

- **Primary Outcome:** Absolute change in potassium over 4 hours following the initial intervention/treatment for hyperkalemia.
  - If no intervention/treatment for hyperkalemia during ED admission, then change over 4 hours following baseline potassium measurement.
- **Secondary Outcome:** Choice of intervention/treatment [ Time Frame: 4 hours ]
  - Changes in study-related potassium following intervention/treatment.

NLM U.S. National Library of Medicine  
**ClinicalTrials.gov** Find Studies ▾ About Studies ▾ Submit Studies ▾ Resources ▾ About Site ▾

Home > Study Record Detail Save this study Saved Studies (4)

**REal World Evidence for TrEAtment of HyperkaLemia in Emergency Department: Multicenter, Prospective, Observational Study (REVEAL-ED)**

**This study has been completed.**

Sponsor:  
ZS Pharma, Inc.

ClinicalTrials.gov Identifier:  
NCT02607085

First Posted: November 17, 2015  
Last Update Posted: June 8, 2017

**⚠** The safety and scientific validity of this study is the responsibility of the study sponsor and investigators. Listing a study does not mean it has been evaluated by the U.S. Federal Government. Read our [disclaimer](#) for details.

Information provided by (Responsible Party):  
ZS Pharma, Inc.

[Full Text View](#) [Tabular View](#) [No Study Results Posted](#) [Disclaimer](#) [How to Read a Study Record](#)

**▶ Purpose**

This study evaluates the management of subjects with Standard of Care (SOC) when admitted to the Emergency Department (ED) with hyperkalemia (potassium value  $\geq 5.5$  mmol/L). Demographics and medical history data, including previous ED visits and/or hospital admissions for hyperkalemia and reason for current ED admission, will be recorded. Subjects who receive an intervention/treatment for hyperkalemia will have study-related potassium values determined at 30 minutes, 1, 2, and 4 hours after the start of treatment. Subjects who receive no intervention/treatment during the initial 4-hour period will have a study-related potassium value determined 4 hours after the baseline potassium measurement. Available data obtained as part of SOC management will include physical examinations, vital signs, fluid intake and urine output, ECGs, clinical laboratory data, and results of chest x-rays. Data regarding the subject's chief complaint upon admission to the ED, the possible cause of the subject's hyperkalemia, and admitting and discharge diagnosis will be recorded; the subject's overall discharge summary will also be collected.

**Condition**  
Hyperkalemia

Study Type: Observational  
Study Design: Observational Model: Case-Only  
Time Perspective: Prospective

Official Title: REal World Evidence for TrEAtment of HyperkaLemia in the Emergency Department (REVEAL - ED): a Multicenter, Prospective, Observational Study

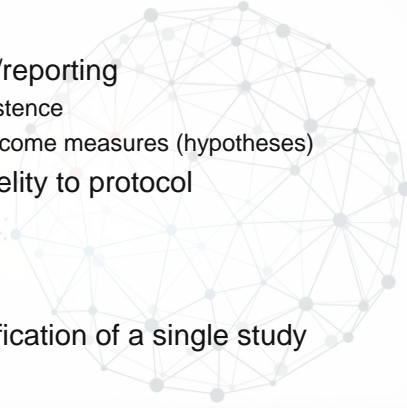
## Issues in Registering Observational Studies

- Other observational study designs pose variety of challenges (e.g., retrospective data collections)
  - Study start and end dates
  - Definition of study cohort (e.g., secondary data analysis)
- Delineating a single observational study
  - Vs a broad plan for data analysis, and
  - How to handle sub-studies and secondary studies or analyses using the same prospective data set
- Need for other observational study-specific data elements:
  - e.g Baseline characteristics used to characterize a cohort or that will be included in an analysis
- Other concerns:
  - Ambiguity in terms of which hypotheses are prespecified (prespecified when?)
  - Some concern that prespecification of all hypotheses will inhibit exploratory research

Source: Williams RJ et al. *CMAJ*. 2010;182(15):1638-42.

## Consider goals of registration and how apply to observational studies

- Help participants find studies
- Mitigate selective publication/reporting
  - Ensure public record of study existence
  - Ensure record of prespecified outcome measures (hypotheses)
- Provide tool for assessing fidelity to protocol
- Other
  - Biospecimen availability
  - Patient registry existence
- Goals depend on clear identification of a single study
  - Defined set of participants
  - Defined protocol for data analysis



## OTHER KEY STAKEHOLDER PERSPECTIVES

### *Registry Representative*



**Deborah Zarin, MD**  
National Institutes of Health  
Bethesda, MD, USA



## OTHER KEY STAKEHOLDER PERSPECTIVES

### *Industry Representative*



**Cathy Critchlow, PhD**  
Amgen  
Thousand Oaks, CA, USA

## *Real-World Evidence in Health Care Decision Making*

ISPOR/ISPE Summit on  
Real-World Evidence in  
Health Care Decision Making

Cathy Critchlow  
Center for Observational Research, Amgen Inc.

October 20, 2017  
Washington, DC, USA

[ispor.org/RWEinHealthcareDecisions](http://ispor.org/RWEinHealthcareDecisions)



## Disclosures

### Cathy Critchlow is an employee and shareholder of Amgen Inc.

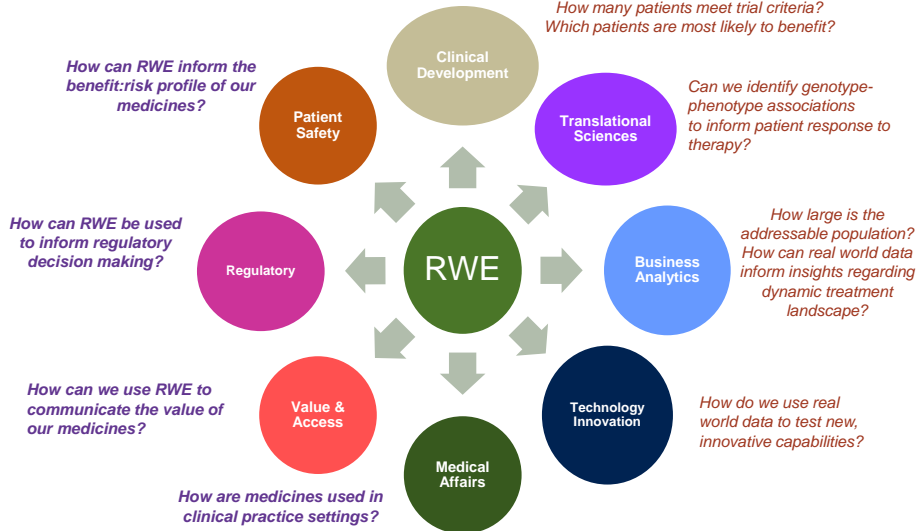
The views expressed herein represent those of the presenter and do not necessarily represent the views or practices of the presenter's employer or any other party.

## Landscape

- Limited understanding of non-interventional research designs and methods among clinical researchers
  - General mistrust in Real World Data / Real World Evidence (RWD/RWE)
  - Difficult to distinguish higher vs lower quality RWE
- Increasing focus on RWE by regulators, payers and health policy groups
- Risk averse culture in biopharma
  - Difficult to mobilize resources to pursue RWE approaches given the absence of clear regulatory pathways and low (perceived) probability of success

**ISPOR-ISPE recommendations seek to provide foundation to increase trust in use of RWE in health care decision making**

## Numerous stakeholders in Biopharma use RWE to address questions not addressable by RCTs



RCT, Randomized Clinical Trial

## Good Practices for RWD Studies of Treatment and/or Comparative Effectiveness



|  | Comment |
|--|---------|
| ▪ <i>A priori</i> , declare study as Hypothesis Testing (HETE) or Exploratory      | ★★★★    |
| ▪ Post protocol and analysis plan prior to data analysis                           | ★ 1/2   |
| ▪ Publish with attestation to conformance/deviation from protocol & analysis plan  | ★★      |
| ▪ Enable opportunities to replicate HETE studies                                   | ★ 1/2   |
| ▪ Perform HETE studies on a different data source and population                   | ★ 1/2   |
| ▪ Authors publicly address methodological criticisms                               | ★★★★    |
| ▪ Include key stakeholders in designing, conducting and disseminating HETE studies | ★★      |

Berger et al. *Pharmacoepidemiol Drug Saf* 2017;26:1033-1039.  
 HETE, Hypothesis Evaluation Treatment Effectiveness

## Credibility of health care database studies



- Database studies are a cornerstone of pharmacoepidemiology. Scrutiny of such studies will be high due to a general lack of understanding and the difficulty in doing them well
- Transparency is critical not only for researchers, but also for other stakeholders, eg database & software vendors
- Analytic methods are increasing in complexity – cognitive AI approaches make it easier to focus on the technical rather than the strengths and weakness of the data and its interpretation
- There is no substitute for asking the right question and using the right data source and methods to answer the question!

Wang et al. *Pharmacoepidemiol Drug Saf* 2017;26:1018-1032.

## OTHER KEY STAKEHOLDER PERSPECTIVES

### *Industry Representative*



**Cathy Critchlow, PhD**  
Amgen  
Thousand Oaks, CA, USA



## OTHER KEY STAKEHOLDER PERSPECTIVES




**Patient Representative**



**Tobias Gerhard, PhD, FISPE, (ISPE)**  
Rutgers University, New Brunswick, NJ, USA

**Patient Representative**



**Eric Gascho**  
National Health Council, Washington, DC, USA

**Registry Representative**



**Deborah Zarin, MD**  
National Institutes of Health, Bethesda, MD, USA

**Industry Representative**



**Cathy Critchlow, PhD**  
Amgen, Thousand Oaks, CA, USA

### ISPOR/ISPE Summit on **Real-World Evidence in Health Care Decision Making**



MEDICAL EDITOR PANEL



## MEDICAL EDITOR PANEL



**C. Daniel Mullins, PhD**  
*Value in Health*

## MEDICAL EDITOR PANEL



**Elizabeth Loder, MD, MPH**  
*The BMJ*



**Laura Happe, PharmD, MPH**  
*Journal of Managed Care & Specialty Pharmacy*



**Brian Strom, MD, MPH, FISPE**  
*Pharmacoepidemiology and Drug Safety*



**Harold Sox, MD**  
*formerly Annals of Internal Medicine*

ISPOR / ISPE Summit on  
**Real-World Evidence in  
Health Care Decision Making**



CLOSING REMARKS

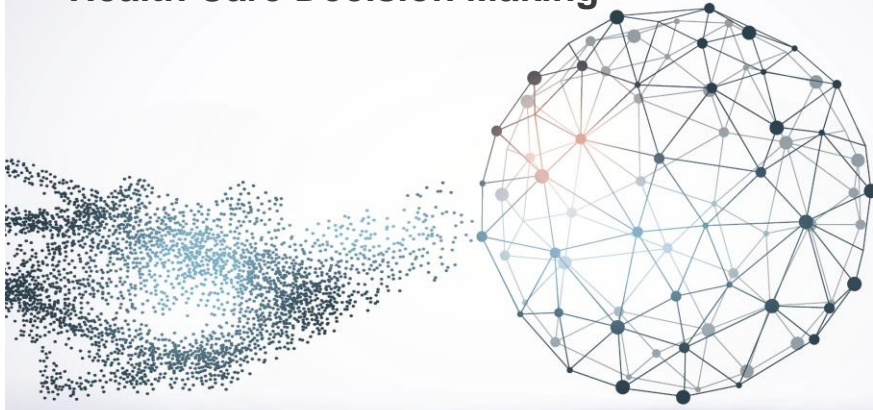


**CLOSING REMARKS**



**Richard Wilke, PhD**  
ISPOR  
Lawrenceville, NJ, USA

ISPOR / ISPE Summit on  
**Real-World Evidence in  
Health Care Decision Making**



Dick Willke  
Chief Science Officer



## Closing Remarks

Some reflections

A few points we've heard

Next steps



ISPOR / ISPE Summit on  
**Real-World Evidence in  
Health Care Decision Making**



ADJOURN

