

# ISPOR STUDENT NETWORK

Newsletter

**MARCH 2023 | WINTER ISSUE**

**ISPOR  
Europe 2022  
recap**



**A QUARTERLY PUBLICATION OF  
THE ISPOR STUDENT NETWORK**

**ISPOR  
Annual 2023  
preview**

## TABLE OF CONTENTS

### **3 CONTRIBUTORS**

### **4 LETTER FROM ISPOR STUDENT NETWORK CHAIR**

### **6 ISPOR EUROPE 2022 HIGHLIGHTS**

*Meeting highlights*

*Student spotlight and activities*

*Student roundtable event*

### **11 FIRESIDE CHATS**

*Student Experiences with Internships and Fellowships*

*Shaping your graduate school journey and getting a holistic experience*

### **15 ISPOR WEBINAR**

*Strategies and skills to land your first job*

### **17 HELPFUL STUDENT INFORMATION**

### **20 VALUE IN HEALTH-FEATURED ARTICLES**

### **22 STUDENT CHAPTER UPDATES**

### **26 ISPOR ANNUAL 2023- BOSTON**

*Short courses*

*How to get involved*

## CONTRIBUTORS

---



**ILKE AKPINAR, MD, MSC**  
*University of Alberta,  
Canada*



**TRUPTI DHUMAL, MS, B.PHARM**  
*West Virginia University,  
United States*



**NNEKA ORJI**  
*University of Tasmania,  
Australia*



**SARA TASNIM**  
*Nanyang Technological University,  
Singapore*

**VIVIENE HEITLAGE, PHARM.D., BCPS**  
*University of Minnesota,  
United States*

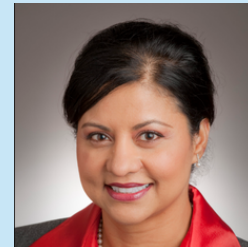


## SPECIAL THANKS

---



**TYLER D. WAGNER, PHARM.D.**  
*Virginia Commonwealth  
University, United States*



**ZEBA KHAN, RPH, PH.D.**  
*ISPOR Student Network Advisor,  
United States*



**JADA LAMPTEY**  
*Associate, Global Member Engagement  
ISPOR, United States*

## SUBMIT AN ARTICLE TO THE NEWSLETTER!

To submit an article for the next issue of our student newsletter, please contact the ISPOR Student Network at [studentnetwork@ispor.org](mailto:studentnetwork@ispor.org)

## LETTER FROM THE STUDENT NETWORK CHAIR

Dear ISPOR Colleagues,

I am honored to serve as the Student Network Chair for the International Society for Pharmacoeconomics and Outcomes Research (ISPOR). As the Chair, I have the privilege of working with a talented and dedicated team of over 50 student leaders and oversee the activities of our 2,000+ student members. I am truly impressed by their dedication and investment in promoting ISPOR's mission and advancing the field of health economics. These talented individuals come from diverse backgrounds and perspectives, with representation from 14 different countries and 50 universities. Many hold degrees in healthcare-related fields and are actively pursuing further training. With the high quality of trainees in HEOR, I am confident that the future of our field is bright.

My goals for the 22-23 term are Engagement & Re-Engagement, Professional & Educational Development, and Globalization. For Engagement & Re-Engagement, I am focused on engaging and sustaining active student chapters, re-engaging inactive chapters, and establishing new student chapters globally. In Q4 of 2022, we welcomed 5 new and reactivated chapters. By the end of my term, I aim to foster a sense of belonging and inclusivity within the ISPOR Student Network Community and increase engagement through leadership calls, student network committees, and conference attendance.

For Professional & Educational Development, I am working with our student leaders to create educational opportunities, including engaging webinars and Fireside Chats, and our bi-annual (soon to be quarterly) newsletter. The education committee has organized two webinars, with more planned for the future. The publications committee is hard at work on our newsletter and Fireside Chats podcast, which provide graduate students with valuable information relevant to their studies and careers.

Regarding Globalization, my goal is to open the door for new chapter development in regions or countries where limited or no chapters currently exist, engage regional leads to bridge the gap between local chapters, and to promote diversity, equity, and inclusion within the ISPOR Student Network globally. We are launching a pilot program at ISPOR Annual in Boston, MA that will provide a platform for individuals from underrepresented backgrounds to network with and receive guidance from experienced professionals in HEOR.

## LETTER FROM THE STUDENT NETWORK CHAIR

Over the past six months, our event planning committee has organized roundtables, panels, poster tours, and gatherings for both the European and North America conferences, giving students the opportunity to network and engage in discussion on important topics. The chapter onboarding committee is welcoming new chapters and revamping our Adopt A Chapter program to ensure access to the resources and support. Our member engagement committee has launched a new LinkedIn page to share content and information relevant to our student members. Finally, our survey and evaluation committee is analyzing the results of our student interest survey, which will soon be shared with the network.

I would like to extend my gratitude to Robert Selby, Jada Lamptey, and Zeba Khan for their support of the ISPOR Student Network. Robert, as director of global member engagement, has helped streamline processes and increase efficiency. Jada, as staff liaison, has been an important advocate for our cause. Zeba Khan, PhD, our Student Network Advisor, has provided invaluable guidance and support and her dedication to our success highlights the importance she places on the development of the next generation of health economics professionals.

I am grateful for the opportunity to serve as the Student Network Chair and am proud of the work that our team has accomplished. I would like to especially acknowledge the contributions of our student leaders, who embody the passion, diversity, and dedication that exists within the ISPOR student community. I look forward to continuing to work with all of you to create a vibrant and engaged student community within ISPOR.



**TYLER D. WAGNER, PHARM.D.**

*Global Student Network Chair, ISPOR  
Ph.D. Candidate  
Virginia Commonwealth University,  
United States*

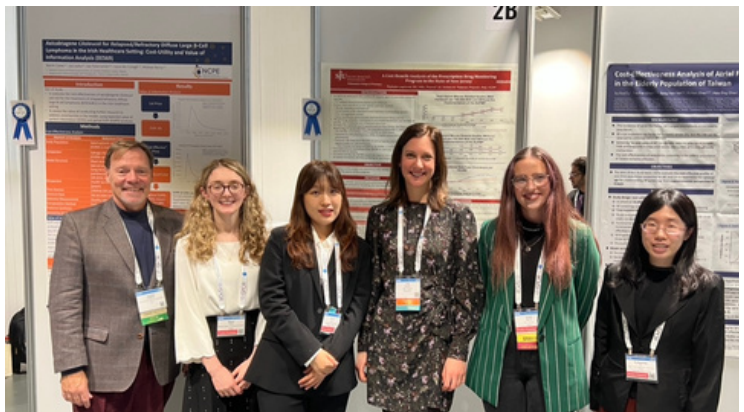
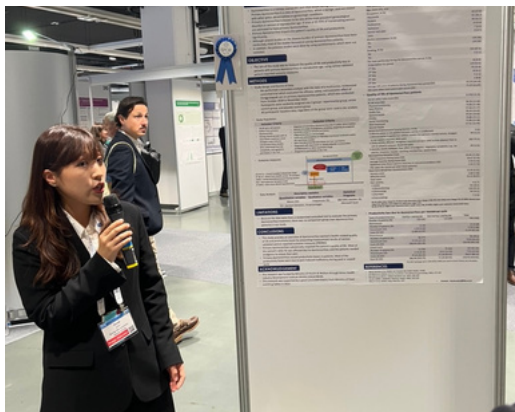
# ISPOR EUROPE 2022 VIENNA, AUSTRIA



# ISPOR EUROPE 2022 REFLECTION

Authors: **Tyler D. Wagner**, ISPOR Student Network Chair and **Clara Marquina**, ISPOR Student Network Event Planning Committee Co-Chair

The ISPOR Student Network would like to take this opportunity to reflect on the ISPOR Europe 2022 that was recently held in Vienna, Austria. We are thankful for all the student network members that were able to join us to make the event a success! If you were not able to participate, we hope this summary of the activities will allow you to feel like you were part of the excitement. We would like to acknowledge all the behind the scene efforts that were made to organize the Student Network events. Thank you to the Student Network Chair, Tyler D. Wagner, Student Network Advisor, Zeba Khan, ISPOR staff, Jada Lamptey and Robert Selby, and the Student Network Event Planning Committee for your organization and involvement in the activities. A special thank you to Clara Marquina, co-chair of the Event Planning Committee who moderated our roundtable on real world data and evidence! To learn more about how to get involved with the Student Networks please contact us by emailing [studentnetwork@ispor.org](mailto:studentnetwork@ispor.org).



## ISPOR EUROPE 2022 STUDENT RESEARCH SPOTLIGHT

The Student Research Spotlight was an overwhelming success at ISPOR Europe. The poster tour, held on Monday, November 7, 2023 attracted over 30 attendees and was one of the most well-attended poster tours of the conference. Six students with high scoring conference abstracts were selected to share their research in the poster tour in front of their peers. Attendees of the event rotated in a round robin format to each presenter and listened to a 5-minute elevator pitch that summarized the research study, the methods, challenges, implications, and conclusions.

### PRESENTATIONS

**Cost-utility and value of information analysis for the use of Axicabtagene Ciloleucel in treating relapsed/refractory diffuse large B-cell lymphoma in the Irish healthcare system**

Presenter: **Niamh Carey**, National Centre for Pharmacoeconomics, Ireland

**Impact of dysmenorrhea on quality of life and productivity in Korea**

Presenter: **Hyuna Yoon**, Department of Regulatory Science, Kyung Hee University, South Korea

**Cost-effectiveness of atrial fibrillation screening in the elderly population in Taiwan**

Presenter: **Iris Fu**, National Taiwan University, Taiwan

**Cost-benefit analysis of the New Jersey prescription drug monitoring program**

Presenter: **Rushabh Lagdiwala**, Philadelphia College of Pharmacy, United States (Presented by **Andrew Peterson**, Pharm.D., Ph.D.)

**Patient preferences on decentralizing clinical trials through a focus group study**

Presenter: **Julia Kopanz**, Department of Epidemiology and Global Health, University Medical Center Utrecht Netherlands

**Impact of the COVID-19 pandemic on antiviral drug development, collaboration, and innovation using a multi-stakeholder systems dynamics analysis.**

Presenter: **Grace Beirne**, Access-To-Medicines Research Centre, KU Leuven, Bulgaria

### MODERATORS

**Zeba M Khan, RPh, MS, Ph.D.**

Rutgers University,  
Piscataway, NJ, USA

**Tyler D. Wagner, Pharm.D.**

Virginia Commonwealth University,  
Richmond, VA, USA



# ISPOR EUROPE 2022 STUDENT ROUNDTABLE EVENT

Topic: **Real Word Data and Information Systems**

Author: **Clara Marquina**, ISPOR Student Network Event Planning Co-Chair

The ISPOR Europe Vienna 2022 conference saw the long-awaited return of many in-person events and activities, including the in-person Student Roundtable Panel, an event organized by the ISPOR Student Network Event Planning Committee. on November 8, 2022. While the ISPOR conference still offered a hybrid approach, this event returned to its face-to-face format. For those who were unable to attend but are interested in the content shared, you can access the slides [here](#).

The Student Roundtable Panel has been conducted for several years at the annual and European ISPOR conferences, allowing students to learn from and interact with world experts in key HEOR topics. This conference's theme "Real Word Data and Information Systems" was presented by three top real-world evidence experts on November 8, 2022. The panelists were Wim Goettsch, Ph.D., Special HTA Advisor for the Dutch National Healthcare Institute and Professor at Utrecht University, Blythe Adamson, MPH, Ph.D., Principal Quantitative Scientist at Flatiron Health and Ashley Jakska, MPH, Scientific Partnership Lead at Aetion. ISPOR Student Network Chair Tyler D. Wagner and Event Planning Committee Co-Chair Clara Marquina moderated the session. You may view the slides [here](#).

During the event, Goettsch discussed why real-world data (RWD) is useful compared to other types of evidence. He further elaborated on when and how real-world clinical practical data is used to support health-technology assessments (HTA) of pharmaceuticals. Next, Adamson introduced the audience to the challenges of real-world evidence in terms of data integrity and data structure and offered some insights on the various industries within healthcare managing RWD.

Lastly, Jaksa gave a detailed examination of the importance of transparency and reproducibility, in all HEOR sciences, but specially in real-world evidence. She emphasized that in one's day to day work, one should use pre-existing tools for guidance, document their steps, include details of those steps in scientific submissions and publications, and advocate within teams and departments for increased transparency and reproducibility.

The event was attended by approximately 30 students and early career researchers who had a great opportunity to participate in a small group discussion with the panel experts after listening to their presentations and engaging in an active question and answer session. For those who were unable to attend, the slide deck used in the presentation will be made available on the ISPOR Student Network website.



# FIRESIDE CHATS



# STUDENT MEMBER'S PERSPECTIVE

## Episode #11 – 2022 Student Experiences with Internships and Fellowships

<https://soundcloud.com/isporfiresidechat/2022-student-experiences-with>



After listening to the fireside chat, I had a lot of very interesting thoughts and perspectives within the topic of internships and fellowships. First, I was pleasantly surprised to find how relatable each of the speakers were to myself. Jyotirmoy Sarker (University of Illinois Chicago, USA) was a pharmacist much like me that chose to do an internship based on the skills he felt he was lacking. Dr. Shweta Shah (University of Wisconsin-Madison, USA), with a mixed methods research background, wanted to find a position where she could utilize her current skills and within academics. The fascinating part is that I could feel myself relating to both of them! Personally, the idea of having multiple ways to approach internships and fellowships is very appealing and a good way to examine different opportunities. One specific thing mentioned that may narrow the options down for some is that international students require sponsorship. I think this is an important point – as a U.S. citizen, I have looked into opportunities in other countries without taking into consideration that I may need the company to offer sponsorship. The overall take away I got from both of the speakers was to be open to all internship opportunities regardless of when they are offered to you in your academic journey. Also, employers are looking for willingness to learn and good fit as opposed to technical skills. This gives me a boost of confidence that the right opportunity will present itself at the time it's meant to be.

### Vivienne Heitlage,

Pharm.D., BCPS, Ph.D. candidate  
University of Minnesota, United States



## STUDENT MEMBER'S PERSPECTIVE

### Episode #12 – 2023 Shaping your graduate school journey and getting a holistic experience

<https://soundcloud.com/isporfiresidechat/shapinggradschooljourney>



I was very excited when this fireside chat was released. For new students starting graduate school, there could be instances where navigating graduate education can be overwhelming. Drs. Benjamin Lewing and Soham Yande's reflection on their experience perfectly captures the essence of graduate school whilst providing a multitude of advice that new or current students may find helpful.

Their conversation included useful tips on multiple topics such as applying for Ph.D. programs, selecting a mentor, and maximizing publications through collaborative projects. The fascinating part of their conversation is that they discuss almost every aspect of graduate learning. Being a dissertator myself, their suggestions on selecting a dissertation research topic felt most useful. They also place emphasis on exploring things outside of graduate learning such as getting involved in co-curricular and extra-curricular activities. They discuss the importance of networking and doing internships. They highlight their own internship experience and share insights on leveraging this opportunity in supporting one's Ph.D.

The speakers also emphasized the importance of taking some downtime to support one's mental health. I feel as a graduate student, school can be very draining or overwhelming. Mental health is a very important topic and I am glad the speakers discussed it as part of their conversation. Lastly, I believe the overall conversation was very helpful and I am confident that many prospective students will find it extremely effective to support them while navigating graduate school.

**Trupti Dhumal,**  
B.Pharm, MS, Ph.D. candidate  
West Virginia University, United States



IN CASE YOU MISSED THEM...

# PAST FIRESIDE CHATS

1

[Getting involved in ISPOR & Reflections on Machine Learning Webinar](#)

2

[CHEERS 2022 - Conversation with Professors Don Husereau and Mike Drummond](#)

3

[Student Spotlight with Srujitha Marupuru \(Mini Episode\)](#)

4

[Student Spotlight with Magdiel Habila](#)



# WEBINAR SUMMARY

**Missed a webinar?  
Catch it on demand!**



**ISPOR Webinar**

Friday, December 9, 2022  
11 am ET

*Strategies and Skills to Land Your First Job: The Interview*



**Seina Lee,**  
Pharm.D., M.S.  
Providing a consulting perspective



**Vishvas Garg,**  
Ph.D., MBA  
Providing an industry perspective

**Learning Objectives**

- Provide guidance on undergoing the interview process for jobs in HEOR.
- Learn key skills and professional attributes that hiring managers seek in potential candidates.
- Learn how to best communicate your value proposition to the hiring manager.

Open to all ISPOR Members and Non-members



The ISPOR Student Network Education Committee presented the first segment of a three-part seminar series surrounding strategies and skills needed for landing the first job out of school. The first webinar was led by experienced HEOR professionals, **Vishvas Garg**, Ph.D., MBA, TA Lead, Dermatology Health Economics & Outcomes Research, Abbvie, Chicago, IL, USA, and **Seina Lee**, PharmD, MS, Co-Founder, TwoPharmacists.com, Titusville, NJ, USA.

The speakers provide unique insight from a hiring manager's perspective on what to expect when approaching a health economics and outcomes research job interview. The speakers also share their experiences on what helped them on their career journey and what motivated them most. They provide great tips on preparing CVs and professional social media content, attitudes candidates should avoid during an interview, and communicating value propositions to the hiring manager.

The recording is available [here](#) on the ISPOR website under the "Live and On-Demand Health Economics and Outcomes Research Webinars."

**Ilke Akpınar**  
MD, MSc, Ph.D. student  
University of Alberta, Canada





# HELPFUL STUDENT INFORMATION



# ISPOR COMMUNITIES

**JOIN TODAY!**



## CONNECT WITH:

- Special Interest Groups
- Committees
- Student Network Leadership:  
email [studentnetwork@ispor.org](mailto:studentnetwork@ispor.org) if  
you're not a student leader but  
would like to be involved!

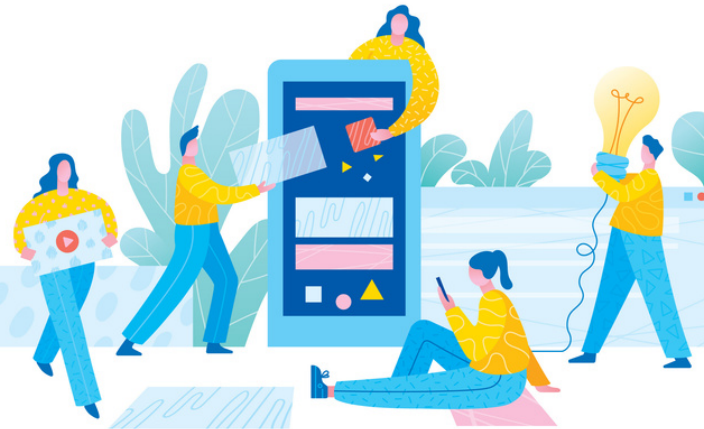


## REASONS TO JOIN

- Network and collaborate with  
HEOR colleagues globally
- Stay up-to-date on events and  
announcements
- Share ideas on discussion boards
- Volunteer opportunities

# HEOR Careers

ISPOR Career Center—*The Job Site for HEOR Professionals*



## CREATE YOUR PROFILE!

- Upload your resume to be searchable by recruiters
- Set up job alerts

[Click to set up now!](#)

## FELLOWSHIPS & INTERNSHIPS

Learn about HEOR organizations that provide employment opportunities for students!

[Access directory here!](#)

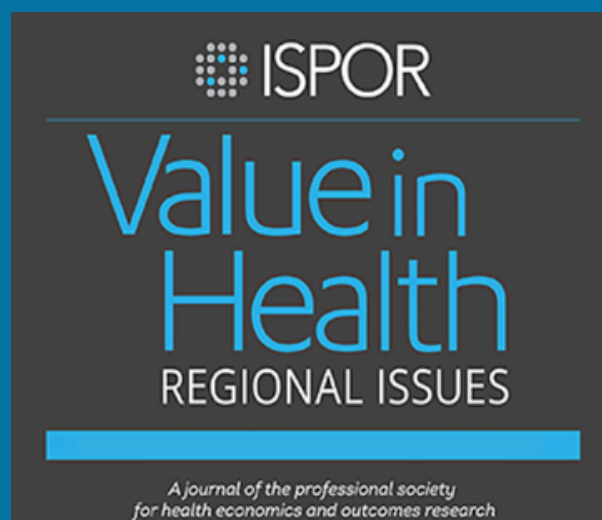


# FEATURED ARTICLES

## EDITOR'S CHOICE



[LINK](#)



[LINK](#)

### The Impact of Funding Inpatient Treatments for COVID-19 on Health Equity in the United States: A Distributional Cost-Effectiveness Analysis

STACEY KOWAL ET AL.

This Value in Health article mentioned an equity-informative distributional cost-effectiveness analysis (DCEA) that examined differences in baseline health, treatment effects, and opportunity costs within the general population based on neighborhood-level social vulnerability and race and ethnicity, finding that funding of COVID-19 treatments increased overall population health and reduced inequality, with larger health gains in more socially vulnerable patients.

Key next steps for expanded DCEA use include (1) addressing critical data gaps in the baseline social distribution of health and the level of health inequality aversion in the United States and (2) determining how to best integrate the results from equity-informative cost-effectiveness analysis (like DCEAs) into current healthcare decision making.

## A GUIDE TO SELECTING FLEXIBLE SURVIVAL MODELS TO INFORM ECONOMIC EVALUATIONS OF CANCER IMMUNOTHERAPIES

STEPHEN PALMER ET AL.

Standard parametric survival models can lack the flexibility to capture the shape of the underlying hazard functions of patients treated with cancer immunotherapies. This can lead to inaccurate long-term survival projections and biased cost-effectiveness estimates. More flexible extrapolation models are being adopted, but their acceptability for healthcare decision making can be an area of contention.

An algorithm was developed to supplement existing guidance on extrapolation model selection for economic evaluation. The algorithm recommends an initial review of relevant external evidence identified in a systematic, reproducible way; highlights the need to engage with clinical experts and consider the observed hazard function and how it might change in the future; cautions against over-interpreting observed survival, particularly when data are immature; and recommends that the results of all plausible models are presented.

If followed, this algorithm will provide a systematic and evidence-based approach for flexible survival model selection. This will improve transparency and consistency, reduce the risk of inappropriate model selection, and increase confidence in the results of the cost-effectiveness analysis of cancer immunotherapies. It may also prove useful for other treatments and diseases where more flexible extrapolation models may be warranted.



# STUDENT CHAPTER UPDATES





CANADA

UNITED STATES OF AMERICA

UNIVERSITY OF BRITISH COLUMBIA

UNIVERSITY OF MINNESOTA

UNIVERSITY OF ILLINOIS AT CHICAGO

CORNELL UNIVERSITY

PHILADELPHIA COLLEGE OF OSTEOPATHIC MEDICINE

UNIVERSITY OF MARYLAND BALTIMORE

VIRGINIA COMMONWEALTH UNIVERSITY

WEST VIRGINIA UNIVERSITY

AUBURN UNIVERSITY

UNIVERSITY OF HOUSTON TEXAS

UNIVERSITY OF TEXAS, AUSTIN

UNIVERSITY OF WASHINGTON

MEXICO

GUATEMALA

HONDURAS

NICARAGUA

COSTA RICA

PANAMA

\* This map is a compilation of student network chapters who submitted chapter update forms for the newsletter \*



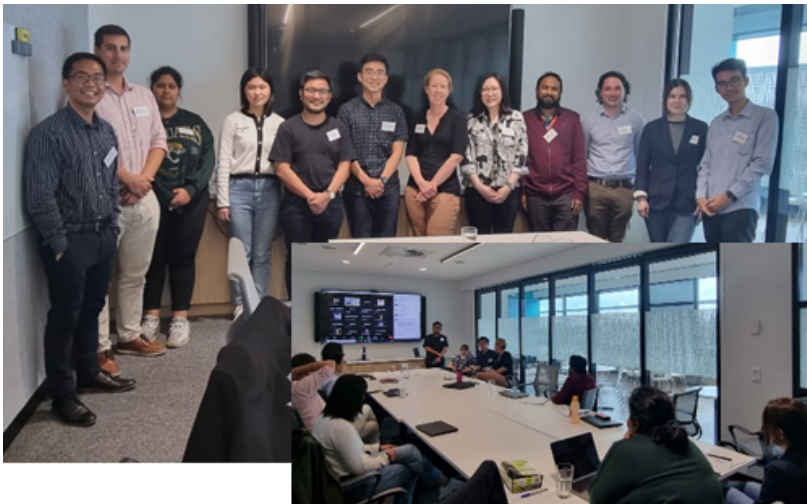




**University of Minnesota Student Chapter**



**Manipal University Student Chapter, India**



**NSW Student and ECR Student Chapters**



**Auburn University Student Chapter**



**NIPER Student Chapter, Mohali, India**

Access detailed student chapter updates here:

[https://docs.google.com/spreadsheets/d/1g2njRfICf5ipzhXRK1\\_3NcTIZ9OD6JfM/edit#gid=1939657904](https://docs.google.com/spreadsheets/d/1g2njRfICf5ipzhXRK1_3NcTIZ9OD6JfM/edit#gid=1939657904)

# ISPOR Annual Meeting

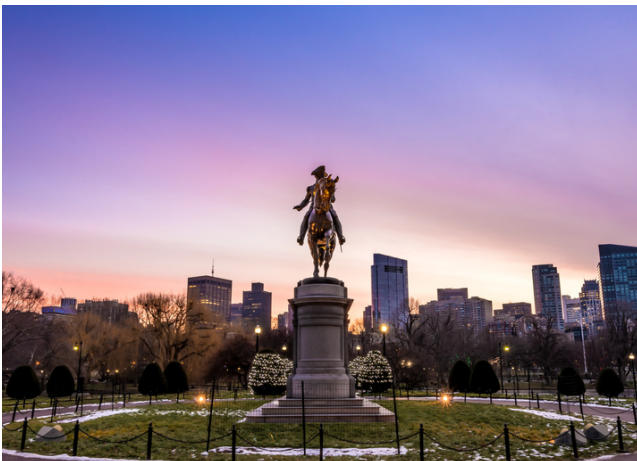
## May 7-10, 2023

**Boston Convention and  
Exhibition Center  
Boston, Massachusetts, USA**



### **Impacting Innovation, Value, and Healthcare Decision Making**

This must-attend event provides you with dedicated opportunities to network with your peers, HEOR experts, and thought leaders and to discuss with a global audience how we establish, incentivize, and share value sustainable for health systems, patients, and technology developers.



# ISPOR SHORT COURSES

## STUDENT MEMBER REGISTRATION FEES AVAILABLE:

\$80 for 4-hour & \$160 for 8-hour courses (virtual)  
\$100 for 4-hour and \$200 for 8-hour courses (in-person)

## UPCOMING COURSES

VIRTUAL

&

IN-PERSON

- **April 26-27:** Introduction to Use of Electronic Health Record Data for Health Technology
- **May 24-25:** Payment for Pharmaceuticals in the US—Understanding the Healthcare System(TM)
- **June 6-7:** Pharmacoeconomic Modeling—Applications
- **June 28-29:** Valuing Health: The Generalized Risk Adjusted Cost Effectiveness (GRACE) Model—Virtual

### **May 7 at ISPOR Annual 2023:**

- A Health Economics Approach to US Value Assessment Frameworks
- Elements of Pharmaceutical/Biotech Pricing
- Applied Cost-Effectiveness Modeling with R
- Benefit-Risk Assessment in Medical Product Development
- Network Meta-Analysis in Relative Effectiveness Research

**AND MANY MORE!**

# HOW TO GET INVOLVED



## ISPOR

Are you an ISPOR member yet? Stay up to date on conferences, short courses, communities, and research by becoming a member! Here is the [link](#) on ISPOR memberships. It's never too late to get involved!

## ISPOR STUDENT NETWORK

Reach out to [studentnetwork@ispor.org](mailto:studentnetwork@ispor.org) to be added to the ISPOR Community for student leaders. The ISPOR Student Network also has 7 committees that student members can serve on!

## LOCAL ISPOR STUDENT CHAPTER

Contact your local chapter to learn about upcoming activities and chapter elections. Consider running for an officer position!



CONTACT  
US



**Questions?**

[studentnetwork@ispor.org](mailto:studentnetwork@ispor.org)

